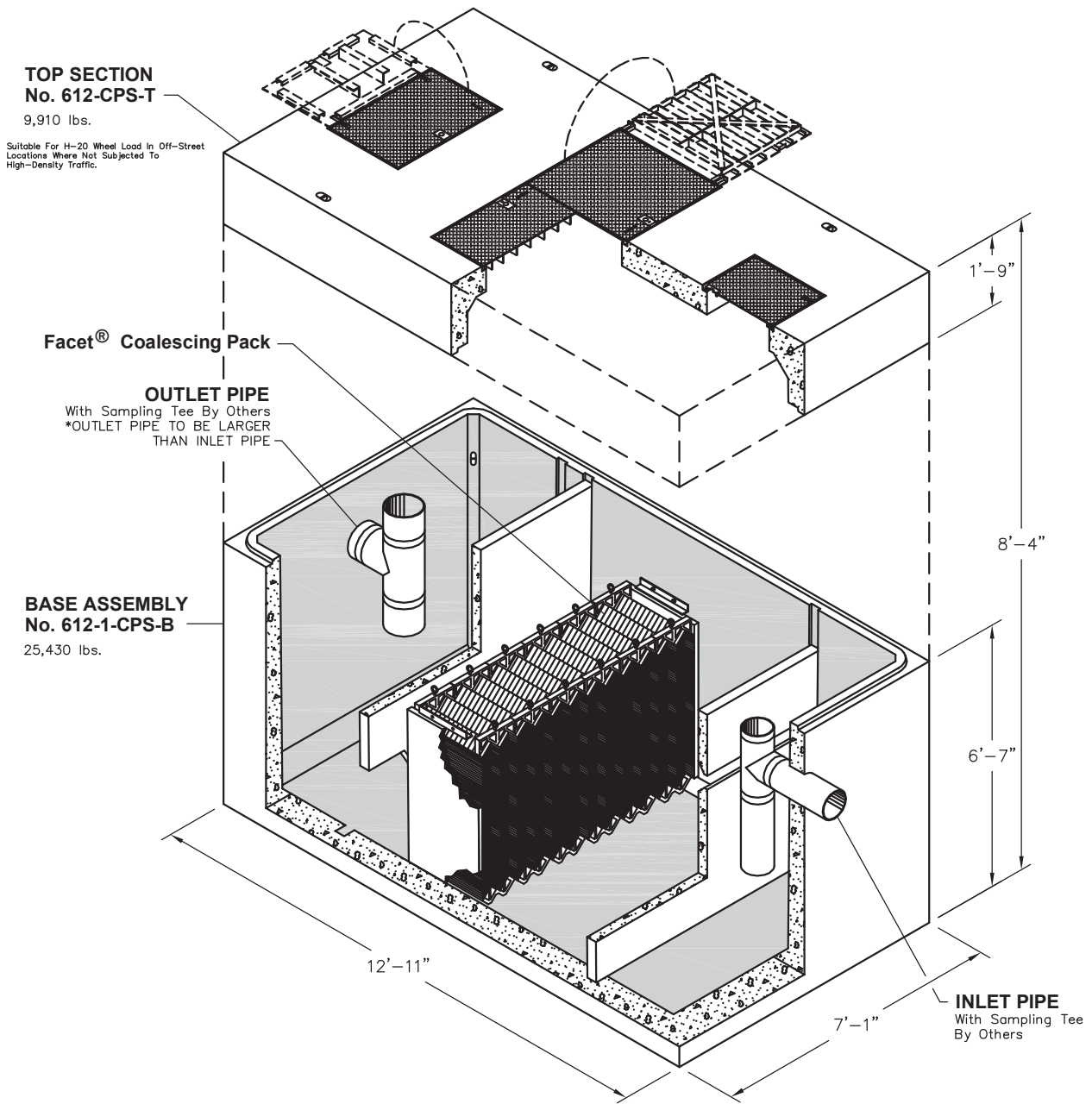


612-1-CPS OIL WATER SEPARATOR

Project Plate Area = 888 Sq/ft

Maximum Process Flow = 830 GPM

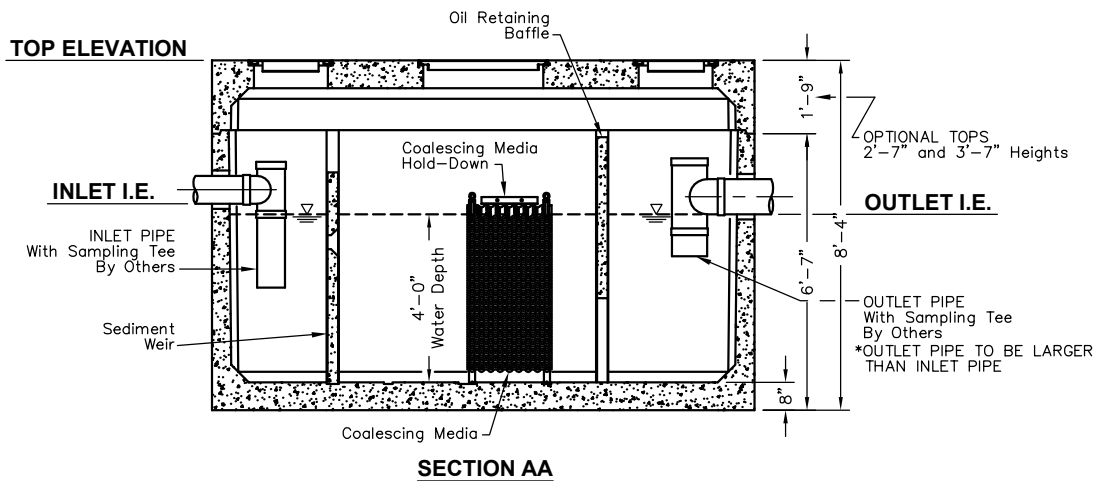
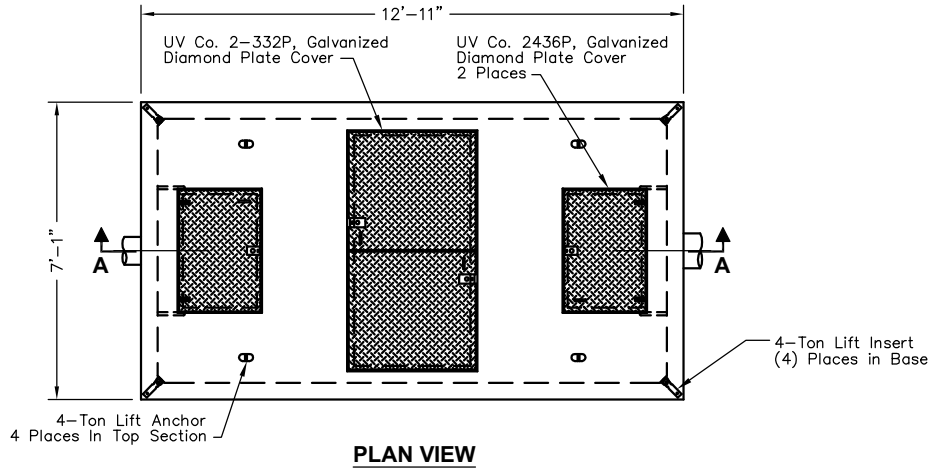


FOR DETAILS, SEE REVERSE>>

Items Shown Are Subject To Change Without Notice
Issue Date: April 2016

612-1-CPS

Project Plate Area = 888 Sq/ft
Maximum Process Flow = 830 GPM



- STRUCTURAL NOTES:**
- Concrete: 28 Day Compressive Strength $f'_c = 7000$ psi
 - Rebar: ASTM A-615 Grade 60
 - Mesh: ASTM A-185 Grade 65
 - Design: ACI-318-05 Building Code
ASTM C-890 "Minimum Structural Design Loading For Underground Precast Concrete Water and Wastewater Structures"
 - Loads: HS-20 Truck Wheel w/ 30% Impact Per AASHTO

- GENERAL NOTES:**
- All Baffles and Weirs To Be Precast Concrete
 - Static Water Depth = 4'-0"
 - Contractor to:
Supply and Install All Piping & Sampling Tees
Grout In All Pipes
Fill With Clean Water Prior To "Start-Up" Of System
Verify All BLockout Sizes and Locations

- INFORMATION NEEDED:**
- Top Of Separator Elevation:
 - Inlet Pipe Size:
 - Inlet Pipe Elevation:
 - Outlet Pipe Size:
 - Outlet Pipe Elevation:

- BASIC DESIGN INFORMATION:**
- INFLUENT CHARACTERISTICS:**
- Oil Specific Gravity: 0.88
 - Operating Temperature: 50°
 - Influent Oil Concentration: 100 ppm
 - Mean Oil Droplet Size: 130 Microns
 - 0.033 ft/min Oil Rise Rate
 - Designed Per Washington State Department Of Ecology

FLOW RATE	EFFLUENT QUALITY	100% COLLECTED SIZE
219 GPM	10 ppm	60 Micron

SCALE: 1/4"=1'-0"