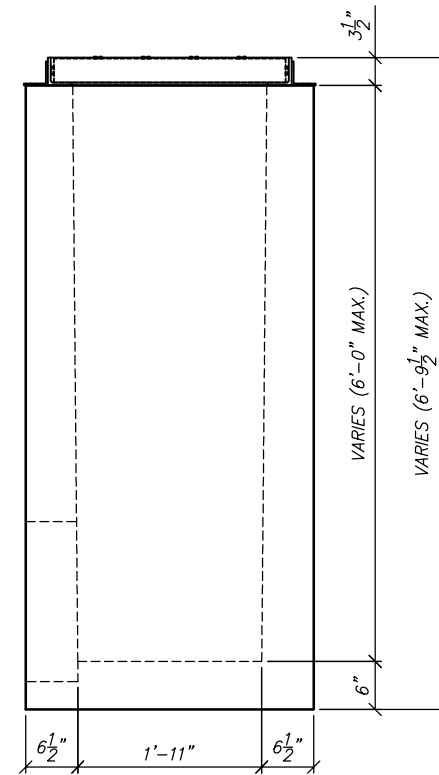
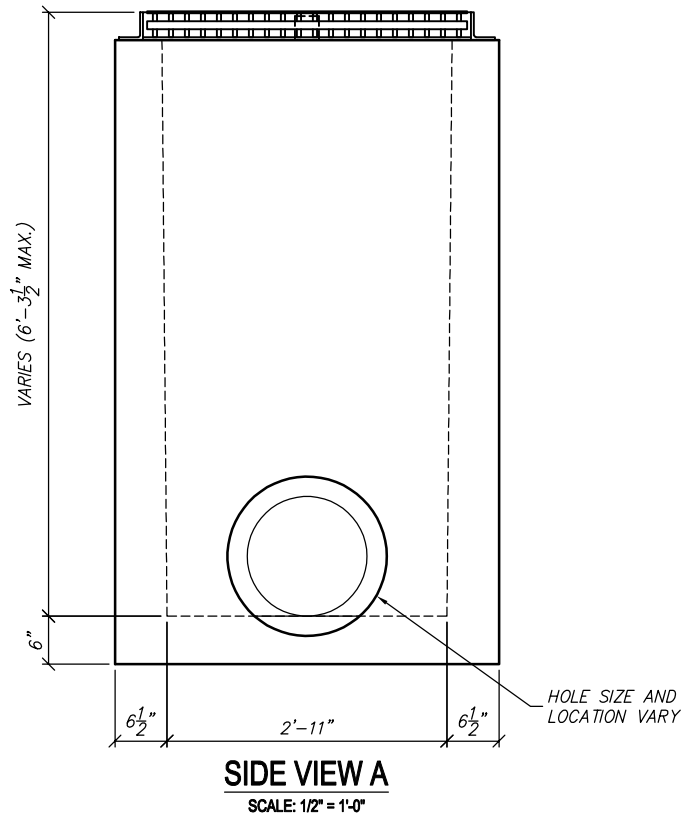
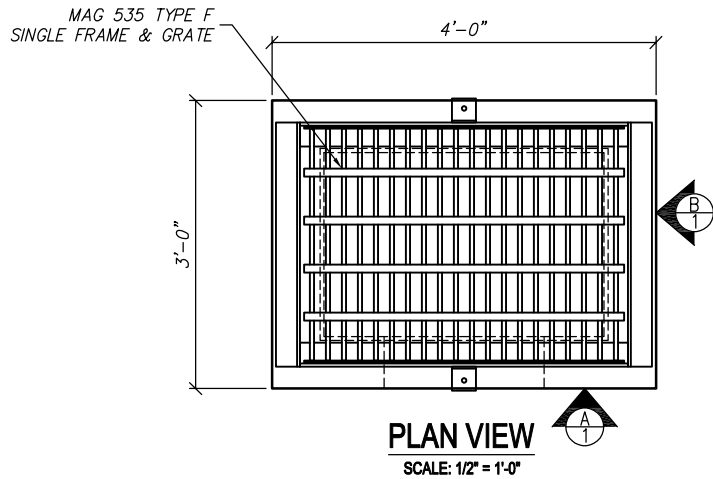


| REV | DESCRIPTION | BY | DATE |
|-----|-------------|----|---------|
| A | NCS UPDATES | CP | 7/31/17 |



STRUCTURAL NOTES

1. CONCRETE: 28 DAY COMPRESSIVE STRENGTH $f_c = 5,000$ psi
2. REBAR: ASTM A-615 GRADE 60
3. MESH: ASTM A-1064 GRADE 65
4. DESIGN: ACI 318-14 BUILDING CODE
ASTM C-857 "MINIMUM STRUCTURAL DESIGN
LOADING FOR UNDERGROUND PRECAST
CONCRETE UTILITY STRUCTURES"
5. LOADS: HS20 WHEEL LOADING IN OFF-STREET LOCATIONS WHERE
NOT SUBJECTED TO HIGH DENSITY TRAFFIC
80 PSF LATERAL LIVE LOAD SURCHARGE - UP TO 8'-0" DEPTH
SOIL: 40 PCF LATERAL SOIL PRESSURE ABOVE WATER TABLE
80 PCF LATERAL SOIL PRESSURE BELOW WATER TABLE
120 PCF SOIL DENSITY
6. SOIL COVER: 0' TO 5' (MAX.)
7. WATER TABLE: 5'-0" BELOW GRADE

GENERAL NOTES

1. ALL JOINTS SHALL BE SEALED USING CONSEAL CS-101 BUTYL RUBBER ROPE.



THIS DOCUMENT IS THE PROPERTY OF OLDCASTLE PRECAST, INC. IT IS CONFIDENTIAL, SUBMITTED FOR REFERENCE PURPOSES ONLY, AND SHALL NOT BE USED IN ANY WAY INJURIOUS TO THE INTERESTS OF, OR WITHOUT THE WRITTEN PERMISSION OF OLDCASTLE PRECAST, INC. COPYRIGHT ©2017 OLDCASTLE PRECAST, INC. ALL RIGHTS RESERVED

2' X 3' MAG 535 CATCH BASIN

CUSTOMER
STANDARD

| DATE | SALES | DRAWN | ENGINEER | CHECKED | SALES ORDER |
|----------------|-------|-------|----------|----------|-------------|
| 7/12/17 | AT | AT | | | |
| DRAWING NUMBER | | | | REVISION | SHEET |
| 14U1136-1 | | | | | 1 OF 1 |