

## 48" TYPE 2 CATCH BASIN (WSDOT B-1e)

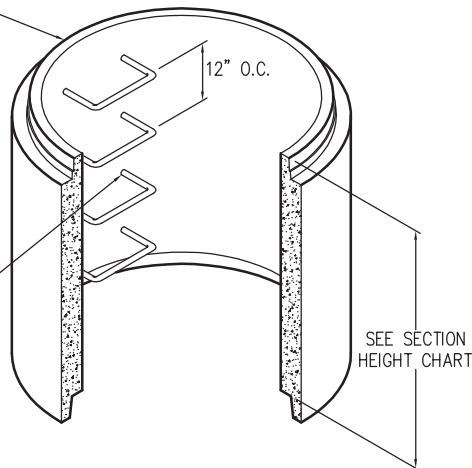
### OLDCASTLE MANHOLES:

- HS-20 Wheel Load, 16.0 kip
- Manhole meets ASTM C478 and all WSDOT/APWA Standard Specifications
- Rubber gasket joint meets ASTM C443
- Polypropylene steps and ladders meet ASTM D4101
- Reinforcement area meets minimum ASTM C478 requirements:  
 Flat Top = 0.15 in.<sup>2</sup>/linear ft. in both directions, w/ 0.20 in.<sup>2</sup> @ 90° around opening  
 3' tall Cone = 3 hoops of 0.375 in. dia. reinforcing bars  
 Sections = 0.15 in.<sup>2</sup>/vertical ft.  
 Bases = 0.15 in.<sup>2</sup>/linear ft. in both directions (slab), 0.15 in.<sup>2</sup>/vertical ft. (wall)
- Knockout sizes and locations available to meet job requirements
- Maximum hole size 36"
- Minimum distance between holes 8"

### SECTION

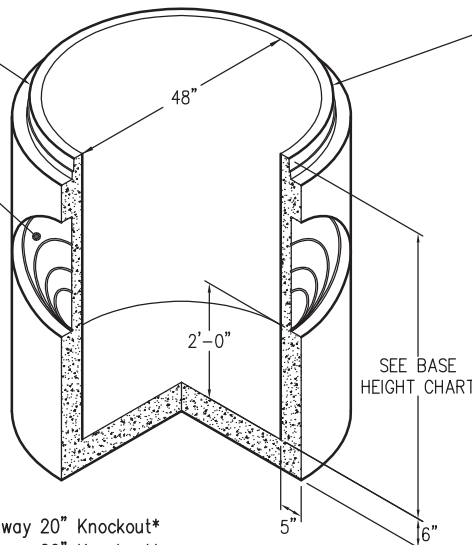
SECTION HEIGHT CHART	
HEIGHT	WEIGHT
1'-0"	870 lbs
2'-0"	1,740 lbs
3'-0"	2,610 lbs
4'-0"	3,480 lbs
5'-0"	4,350 lbs

STEP HOLES  
(SHOWN w/ STEPS)



### BASE

VARIABLE SIZE  
KNOCKOUTS OR  
CORED HOLES  
AVAILABLE



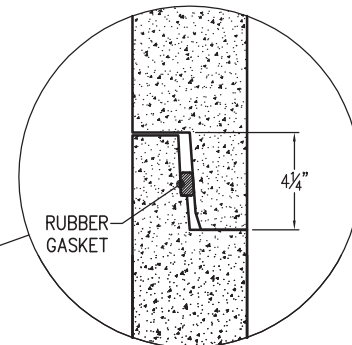
BASE HEIGHT CHART	
HEIGHT	WEIGHT
4'-0"	4,320 lbs
5'-0"	5,150 lbs
5'-0"	4,880 lbs

w/ 4-way 20" Knockout\*

w/ 4-way 20" Knockout\*

w/ 4-way 26" & 34" Knockout\*

\* knockouts at 90°



### JOINT DETAIL

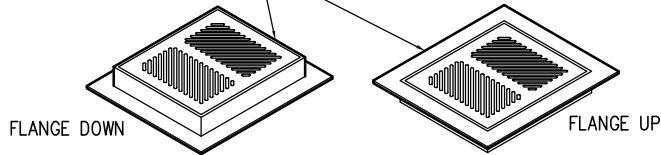
**FOR DETAILS, SEE REVERSE>>**

Items Shown Are Subject To Change Without Notice  
 Issue Date: April 2016

## 48" TYPE 2 CATCH BASIN

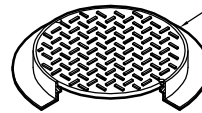
### FRAME AND COVER

240 lbs



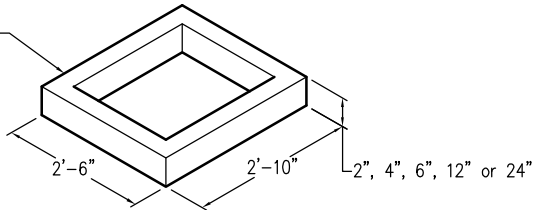
### FRAME AND COVER

360 lbs



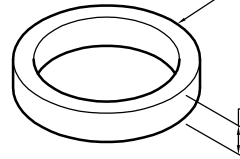
### TYPE 1 CATCH BASIN RISER

2" = 80 lbs  
4" = 160 lbs  
6" = 240 lbs  
12" = 480 lbs  
24" = 960 lbs



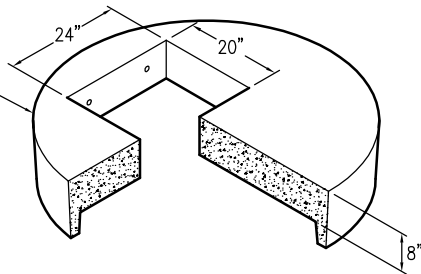
### GRADE RING

2" = 60 lbs  
4" = 120 lbs  
6" = 180 lbs



### 48" FLAT TOP

WITH 20" x 24" HOLE  
1,630 lbs



### 48" FLAT TOP

WITH 24" Ø HOLE  
1,680 lbs

