

54" TYPE 2 CATCH BASIN (WSDOT B-1e)

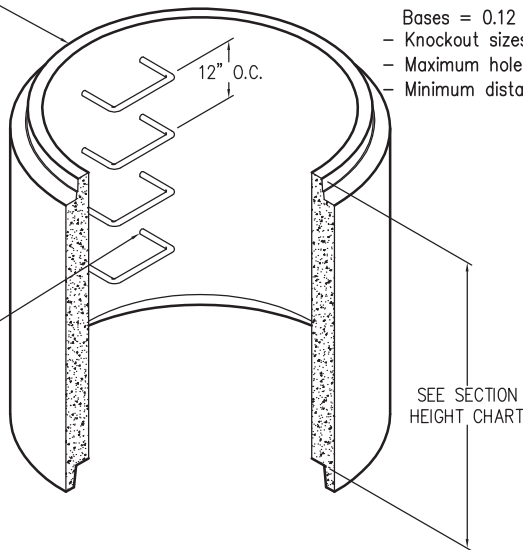
OLDCASTLE CATCH BASIN:

- H-20 LOADING
- Manhole meets ASTM C478 and all WSDOT/APWA Standard Specifications
- Rubber gasket joint meets ASTM C443
- Polypropylene steps and ladders meet ASTM D4101
- Reinforcement area meets minimum ASTM C478 requirements:
 Flat Tops = 0.12 in.²/linear ft. in both directions, w/ 0.20 in.² @ 90° around opening
 Sections = 0.135 in.²/vertical ft.
 Bases = 0.12 in.²/linear ft. in both directions (slab), 0.135 in.²/vertical ft. (wall)
- Knockout sizes and locations available to meet job requirements
- Maximum hole size 42"
- Minimum distance between holes 8"

SECTION

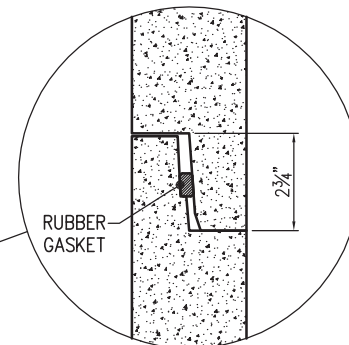
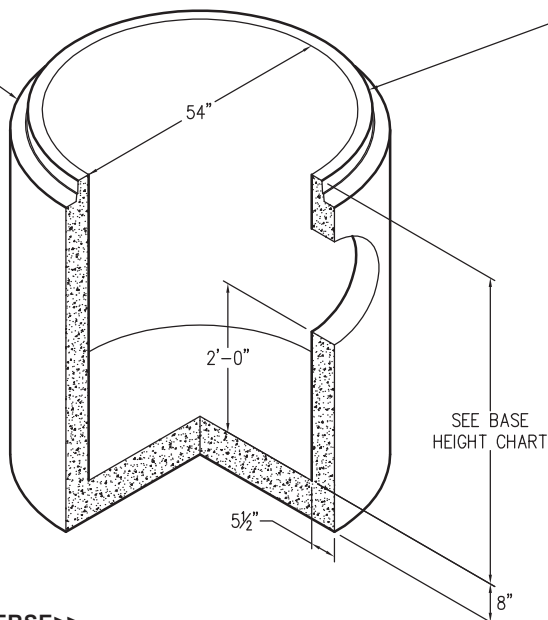
SECTION HEIGHT CHART	
HEIGHT	WEIGHT
1'-0"	1,100 lbs
2'-0"	2,100 lbs
3'-0"	3,100 lbs
4'-0"	4,200 lbs
5'-0"	5,200 lbs

STEP HOLES
(SHOWN w/ STEPS)



BASE

BASE HEIGHT CHART	
HEIGHT	WEIGHT
4'-0"	6,600 lbs
5'-0"	7,600 lbs



JOINT DETAIL

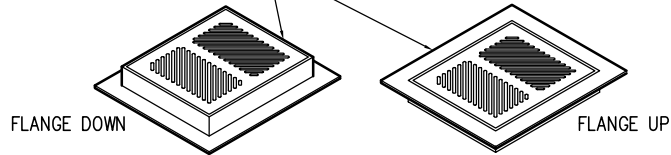
FOR DETAILS, SEE REVERSE>>

Items Shown Are Subject To Change Without Notice
 Issue Date: April 2016

54" TYPE 2 CATCH BASIN (WSDOT B-1e)

FRAME AND COVER

240 lbs



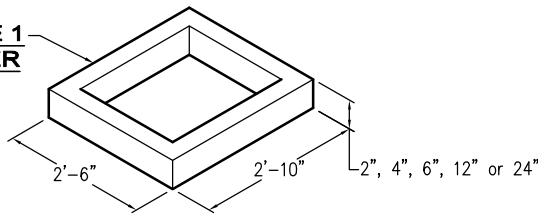
FRAME AND COVER

360 lbs



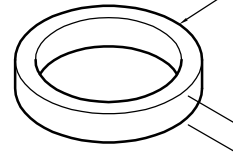
TYPE 1 CATCH BASIN RISER

2" = 80 lbs
4" = 160 lbs
6" = 240 lbs
12" = 480 lbs
24" = 960 lbs



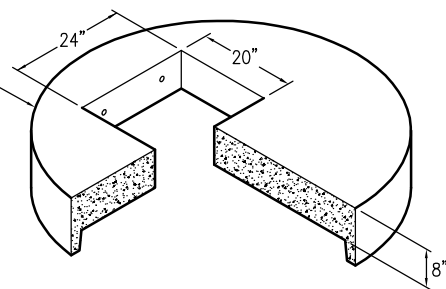
GRADE RING

2" = 60 lbs
4" = 120 lbs
6" = 180 lbs



54" FLAT TOP WITH 20" x 24" HOLE

2,300 lbs



54" FLAT TOP

WITH 24" Ø HOLE
2,300 lbs

