

60" TYPE 1 MANHOLE (WSDOT B-23a)

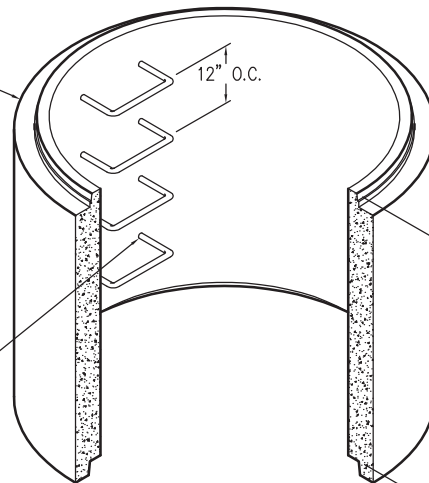
OLDCASTLE MANHOLES:

- H-20 LOADING
- Manhole meets ASTM C478 and all WSDOT/APWA Standard Specifications
- Rubber gasket joint meets ASTM C443
- Polypropylene steps and ladders meet ASTM D4101
- Reinforcement area meets minimum ASTM C478 requirements:
Flat Top = 0.12 in.²/linear ft. in both directions, with 0.20 in.² at 90° around opening
Cones = 2 hoops of 0.250 in. dia. reinforcing bars
Sections = 0.135 in.²/vertical ft.
Bases = 0.12 in.²/linear ft. in both directions (slab), 0.135 in.²/vertical ft. (wall)
- Knockout sizes and locations available to meet job requirements
- Maximum hole size 42"
- Minimum distance between holes 8"

SECTION

SECTION HEIGHT CHART	
HEIGHT	WEIGHT
1'-0"	1,325 lbs
2'-0"	2,260 lbs
3'-0"	3,840 lbs
4'-0"	5,090 lbs
5'-0"	6,350 lbs

STEP HOLES
(SHOWN w/ STEPS)

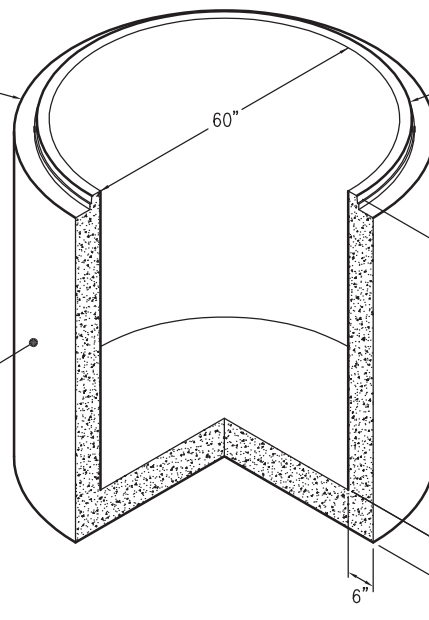


SEE SECTION HEIGHT CHART

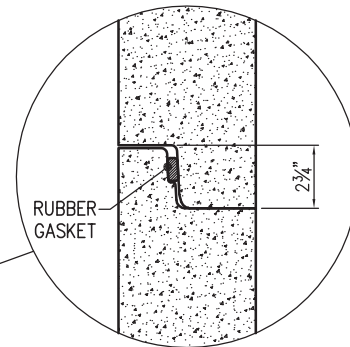
BASE

BASE HEIGHT CHART	
HEIGHT	WEIGHT
2'-0"	5,355 lbs
3'-0"	6,610 lbs
4'-0"	7,865 lbs
5'-0"	9,115 lbs

PENETRATIONS PROVIDED TO SUIT NEEDS



SEE BASE HEIGHT CHART



RUBBER GASKET

JOINT DETAIL

AVAILABLE OPTIONS:

- Pre-channeling
- Coatings
- Kor-n-seal boots
- Saddle bases

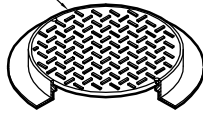
FOR DETAILS, SEE REVERSE>>

Items Shown Are Subject To Change Without Notice
Issue Date: April 2016

60" TYPE 1 MANHOLE

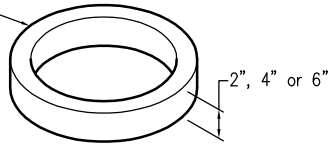
FRAME AND COVER

360 lbs



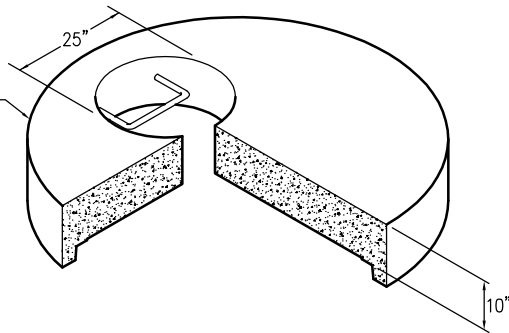
GRADE RING

2" = 60 lbs
4" = 120 lbs
6" = 180 lbs



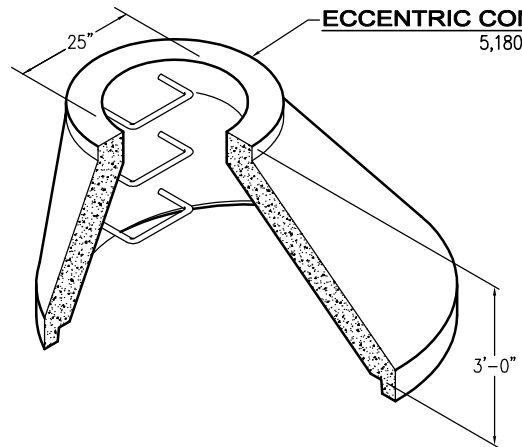
60" FLAT TOP

WITH 25" Ø HOLE
3,245 lbs



ECCENTRIC CONE

5,180 lbs



AVAILABLE OPTIONS:

- Pre-channeling
- Coatings
- Kor-n-seal boots
- Saddle bases