

# 60" TYPE 2 CATCH BASIN (WSDOT B-1e)

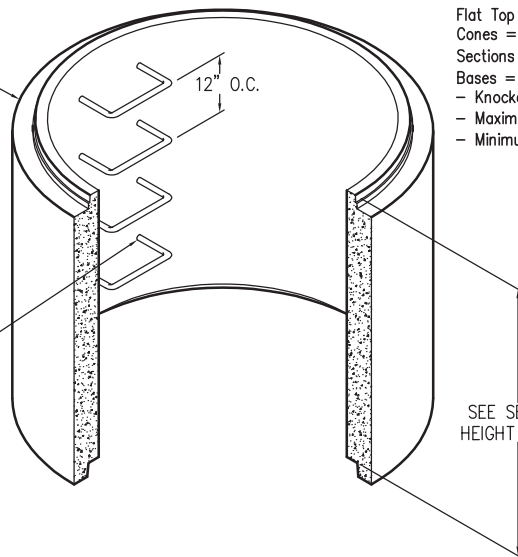
## OLDCASTLE MANHOLES:

- H-20 LOADING
- Manhole meets ASTM C478 and all WSDOT/APWA Standard Specifications
- Rubber gasket joint meets ASTM C443
- Polypropylene steps and ladders meet ASTM D4101
- Reinforcement area meets minimum ASTM C478 requirements:  
 Flat Top = 0.12 in.<sup>2</sup>/linear ft. in both directions, with 0.20 in.<sup>2</sup> at 90° around opening  
 Cones = 2 hoops of 0.250 in. dia. reinforcing bars  
 Sections = 0.135 in.<sup>2</sup>/vertical ft.
- Bases = 0.12 in.<sup>2</sup>/linear ft. in both directions (slab), 0.135 in.<sup>2</sup>/vertical ft. (wall)
- Knockout sizes and locations available to meet job requirements
- Maximum hole size 42"
- Minimum distance between holes 8"

### SECTION

SECTION HEIGHT CHART	
HEIGHT	WEIGHT
1'-0"	1,325 lbs
2'-0"	2,260 lbs
3'-0"	3,840 lbs
4'-0"	5,090 lbs
5'-0"	6,350 lbs

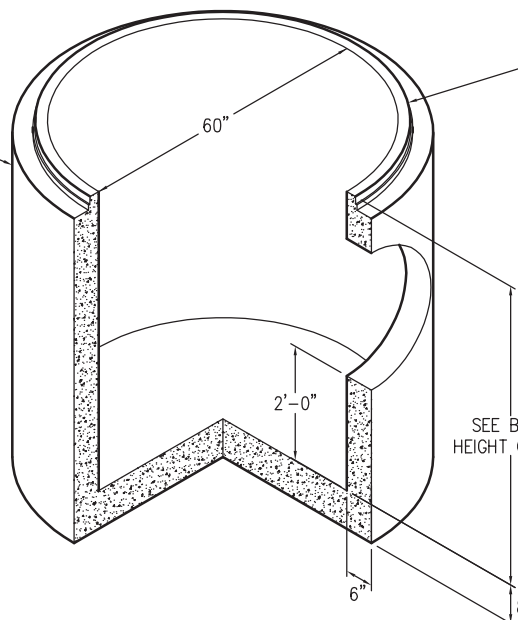
STEP HOLES  
(SHOWN w/ STEPS)



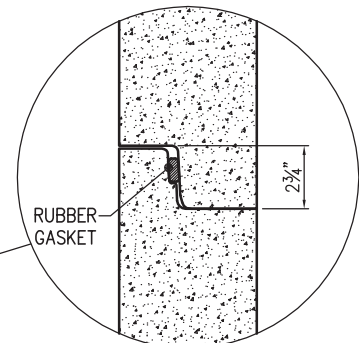
SEE SECTION  
HEIGHT CHART

### BASE

BASE HEIGHT CHART	
HEIGHT	WEIGHT
4'-0"	7,865 lbs
5'-0"	9,115 lbs



SEE BASE  
HEIGHT CHART



RUBBER  
GASKET

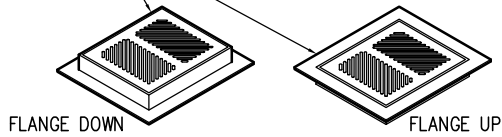
### JOINT DETAIL

**FOR DETAILS, SEE REVERSE>>**

Items Shown Are Subject To Change Without Notice  
 Issue Date: April 2016

## 60" TYPE 2 CATCH BASIN (WSDOT B-1e)

### FRAME AND COVER 240 lbs

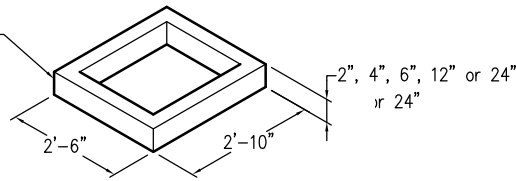


### FRAME AND COVER 360 lbs



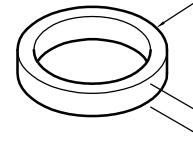
### TYPE 1 CATCH BASIN RISER

2" = 80 lbs  
4" = 160 lbs  
6" = 240 lbs  
12" = 480 lbs  
24" = 960 lbs

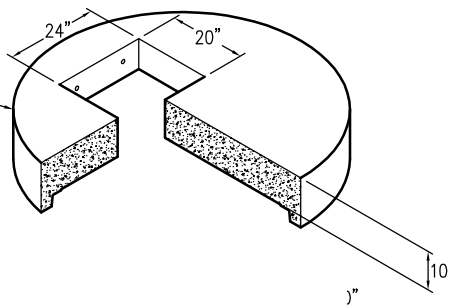


### GRADE RING

2" = 60 lbs  
4" = 120 lbs  
6" = 180 lbs



### 60" FLAT TOP WITH 20" x 24" HOLE 3,255 lbs



### 60" FLAT TOP WITH 25" Ø HOLE 3,245 lbs

