

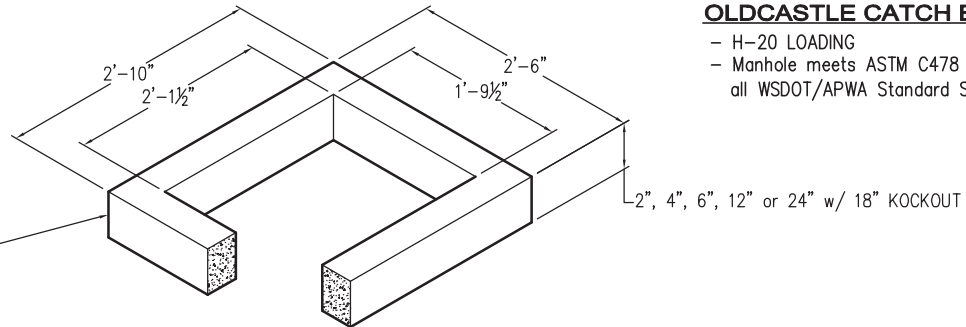
TYPE 1L CATCH BASIN & RISER (WSDOT B-1a)

OLDCASTLE CATCH BASIN:

- H-20 LOADING
- Manhole meets ASTM C478 and all WSDOT/APWA Standard Specifications

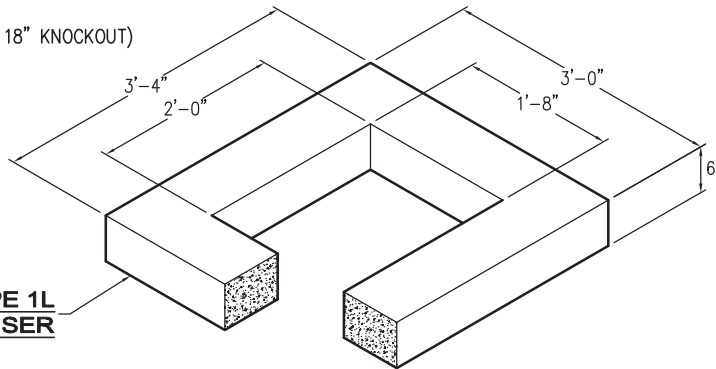
RISER

2" = 80 lbs
4" = 160 lbs
6" = 240 lbs
12" = 480 lbs
24" = 960 lbs (w/ 18" KNOCKOUT)



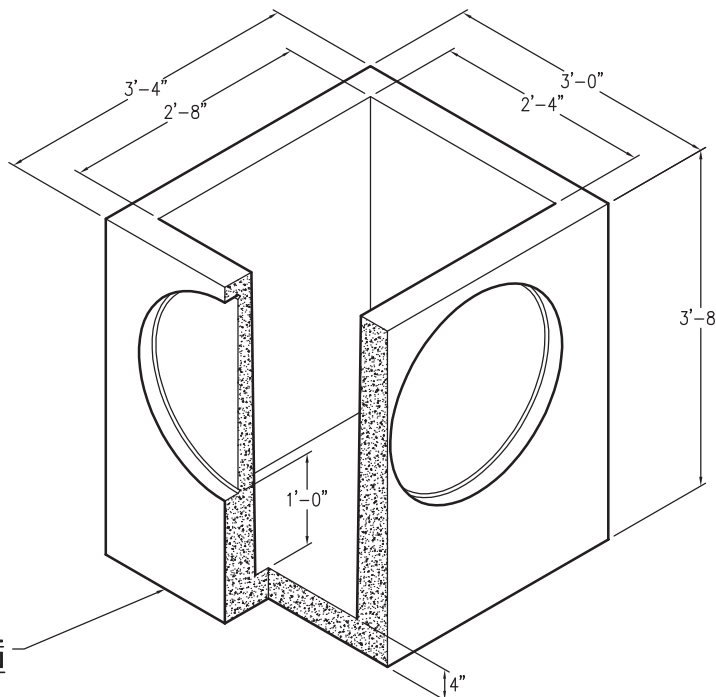
TYPE 1L REDUCING RISER

500 lbs



TYPE 1L CATCH BASIN

2,100 lbs
w/ 26"Ø KNOCKOUTS
TYPICAL ALL (4) SIDES



AVAILABLE OPTIONS:

- CASTINGS AVAILABLE

Items Shown Are Subject To Change Without Notice
Issue Date: April 2016