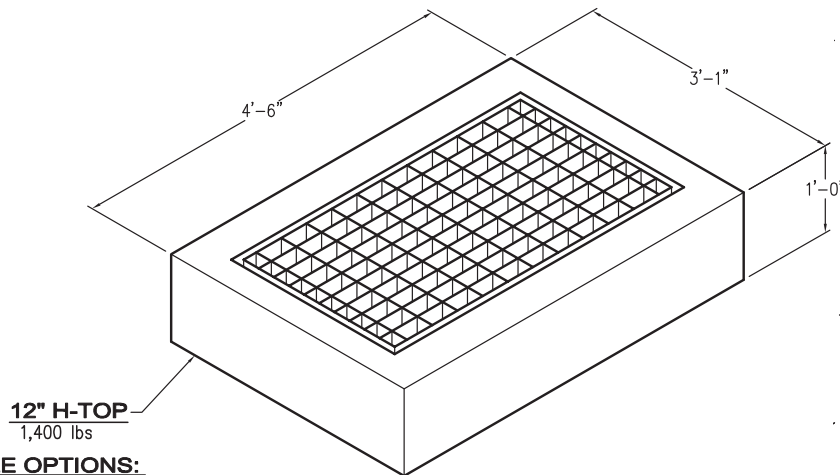


## TYPE 2 GRATE INLET (WSDOT B-4C)

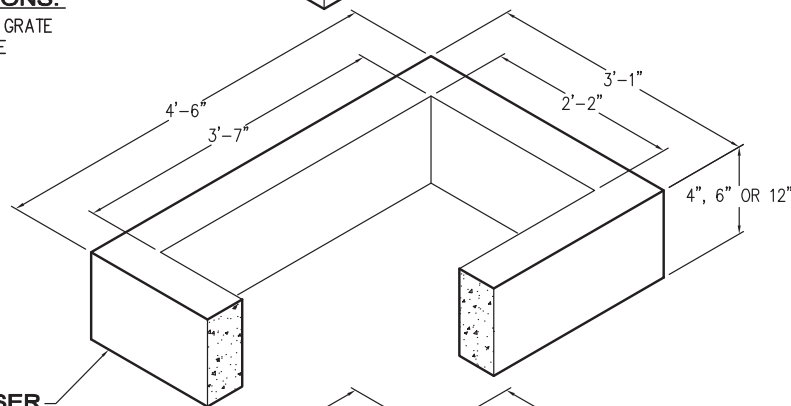


### AVAILABLE OPTIONS:

- TYPE A OR TYPE B GRATE
- DOUBLE VANE GRATE

### OLDCASTLE CATCH BASIN:

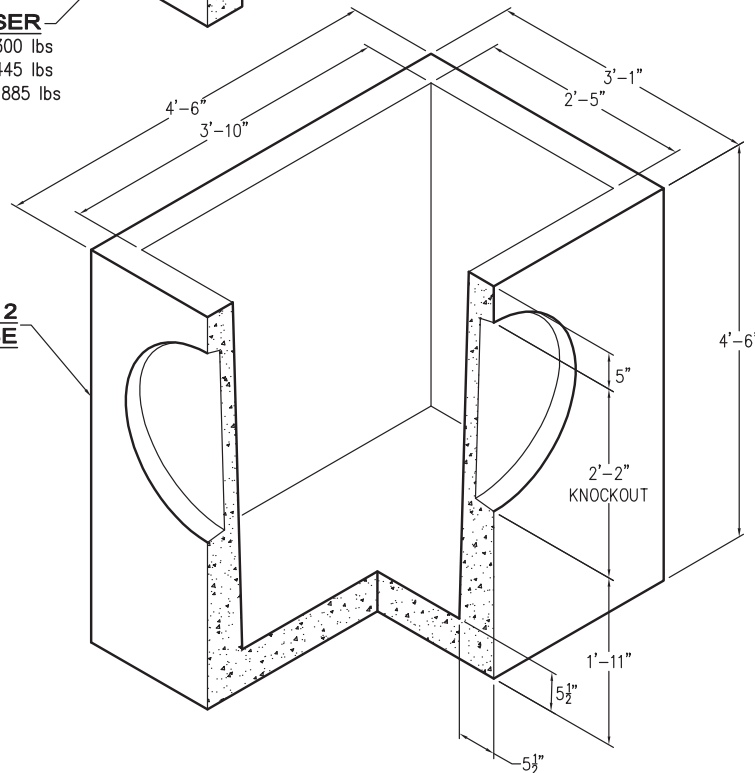
- Catch Basin meets ASTM C478 and All WSDOT/APWA Standard Specifications
- Rebar meets ASTM A615 Grade 60
- H-20 Loading



**RISER**  
4"=300 lbs  
6"=445 lbs  
12"=885 lbs

### TYPE 2 GRATE INLET BASE

3,860 lbs  
26"Ø KNOCKOUT  
TYPICAL ALL (4)  
SIDES



Items Shown Are Subject To Change Without Notice  
Issue Date: April 2016