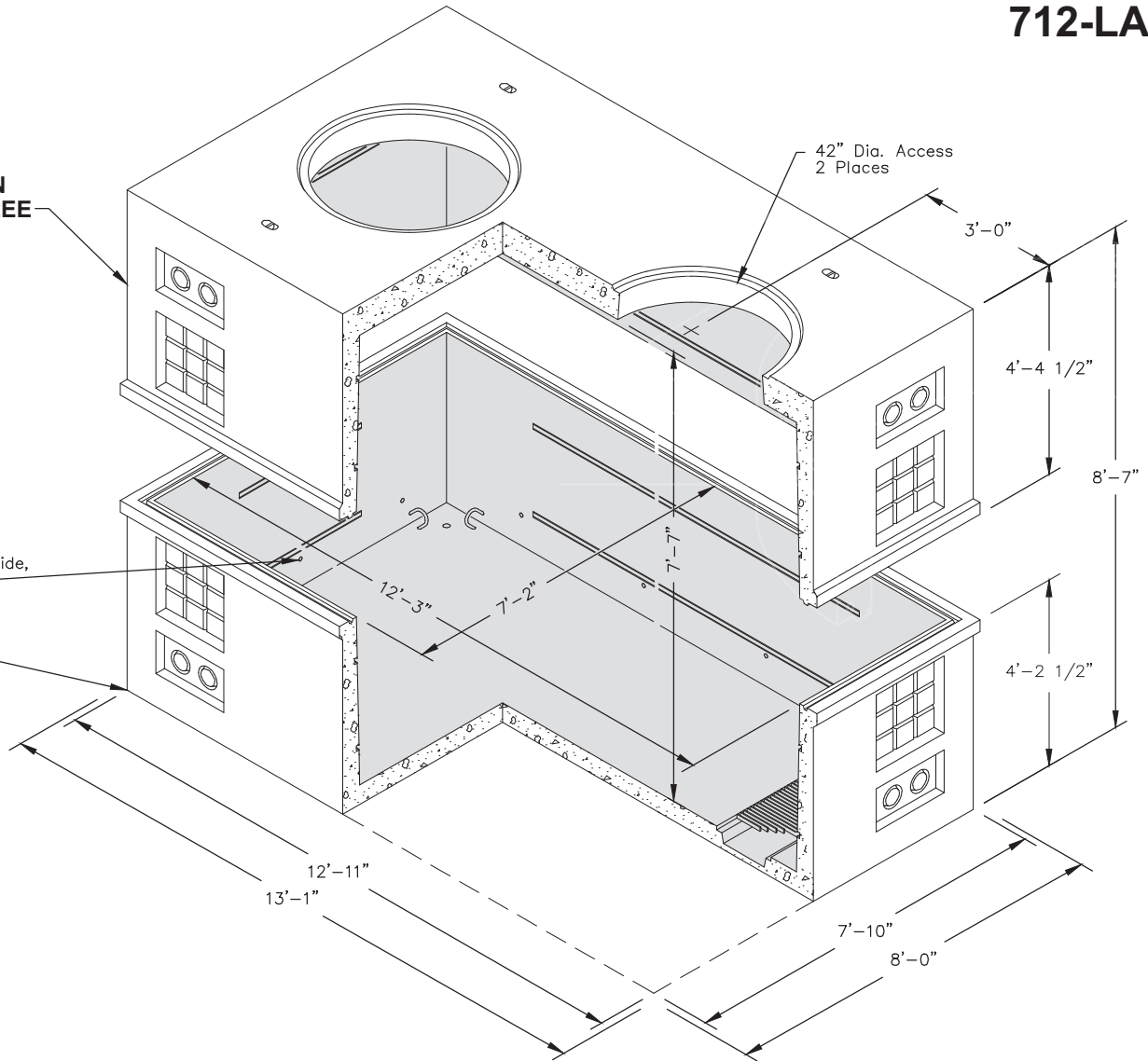


712-LA

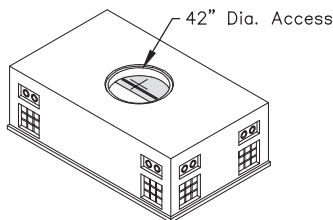
TOP SECTION
No. 712-TL-42EE
14,200 lbs.

1/4" Ground Bus
Inserts, 4 Each Side,
3 One End

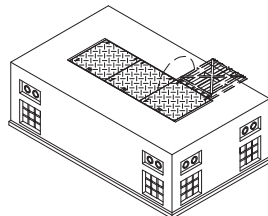
BASE
No. 712-BL
13,900 lbs.



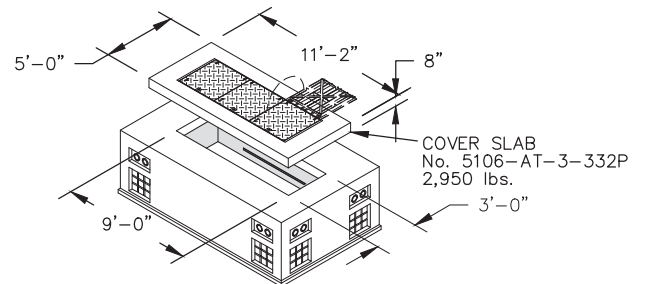
OPTIONAL TOP SECTIONS



ROUND ACCESS OPENING
No. 712-TL-42C
15,100 lbs.



LOCKING STEEL
No. 712-TL-3-332P
10,300 lbs.



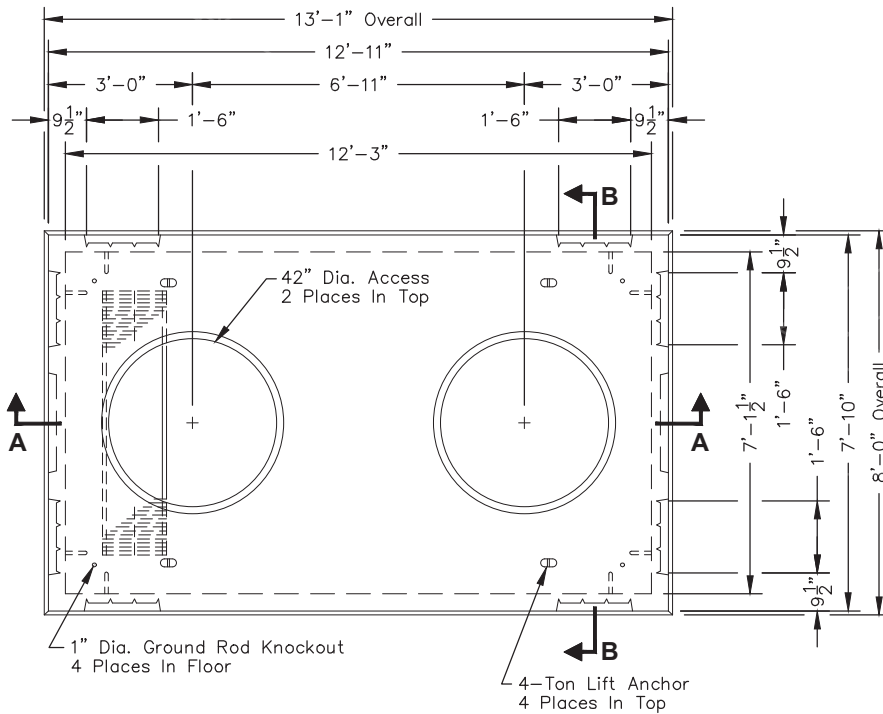
OPENING FOR OPTIONAL COVER SLAB
No. 712-TL-39
13,100 lbs.

Non Skid Covers Available

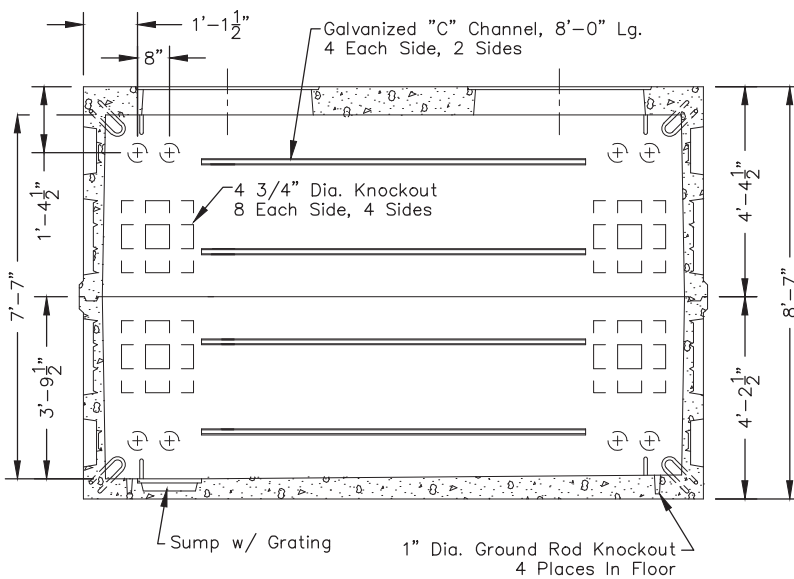
FOR DETAILS, SEE REVERSE>>

Items Shown Are Subject To Change Without Notice
Issue Date: April 2016

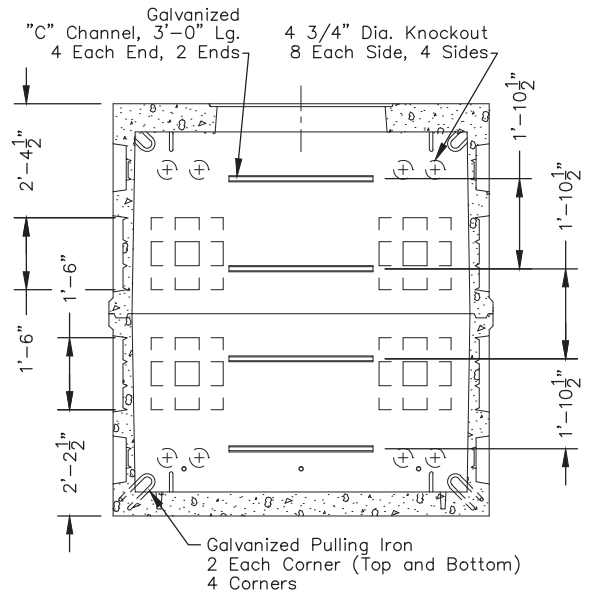
712-LA



PLAN VIEW



SECTION AA



SECTION BB

SCALE: 1/4" = 1'-0"