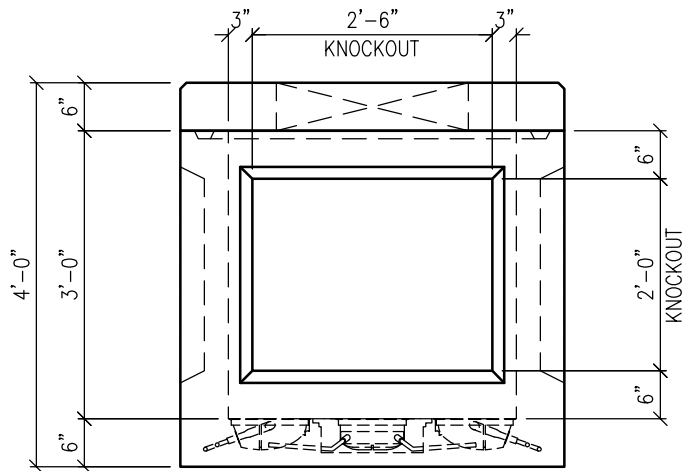
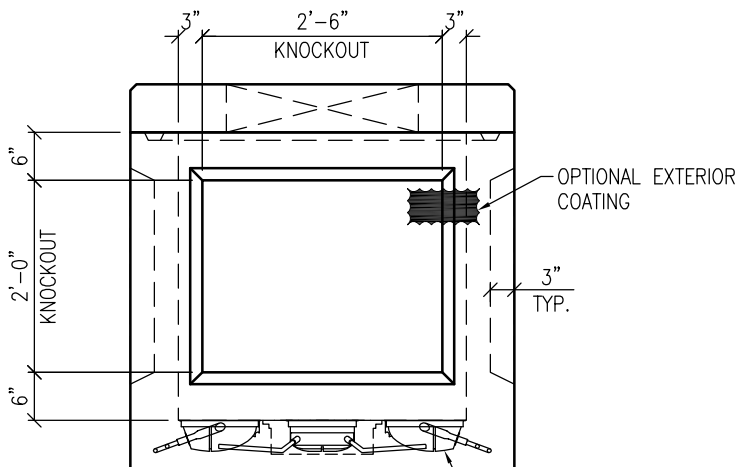


PLAN VIEW
SCALE: 1/2" = 1'-0"

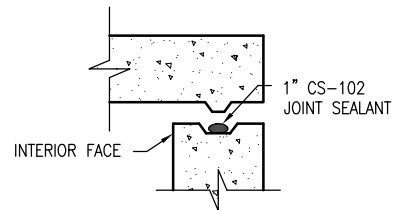


VIEW A
SCALE: 1/2" = 1'-0"



VIEW B
SCALE: 1/2" = 1'-0"

SHIP-LOOSE ITEMS		
QTY	DESCRIPTION	ITEM ID
1 ROLL	JOINT SEALANT 1" x 14.5' CS-102	5439200
OLDCASTLE ID		
QTY	DESCRIPTION	ITEM ID
1 EA.	3 x 3 TOP SLAB w/ 24" OPG.	0021050
1 EA.	3 x 3 TOP SLAB w/ 30" OPG.	0021100
1 EA.	3 x 3 TOP SLAB w/ 36" OPG.	0021150
1 EA.	3 x 3 x 3 BASE	0020100



TOP SLAB WITH TONGUE & GROOVE JOINT
N.T.S

GENERAL NOTES:

1. CONCRETE F'C = 5,000 PSI.
2. REINFORCING STEEL, ASTM A-615
 - 2.1. FY = 60 KSI
3. DESIGN LIVE LOAD = HS-20
4. EARTH COVER = 0'-10" MIN. TO 3'-0" MAX.
5. BUTYL RUBBER JOINT SEALANT
6. CONTRACTOR TO:
 - 6.1. KNOCKOUT WINDOWS USED FOR DUCT BANKS SHALL BE FILLED WITH A MINIMUM OF 3000 PSI CONCRETE TIGHT TO THE UNDERSIDE OF THE UPPER SECTION FOR FULL THICKNESS OF WALL.

WEIGHTS:

- 3' TOP WITH 24" ACCESS: 0.49 TONS / 989 LBS.
- 3' TOP WITH 30" ACCESS: 0.43 TONS / 856 LBS.
- 3' TOP WITH 36" ACCESS: 0.35 TONS / 694 LBS.
- 3' BASE: 1.72 TONS / 3437 LBS.



Oldcastle Precast[®]
CHESAPEAKE

1401 TRIMBLE ROAD
EDGEWOOD, MD 21040 410-812-1213
5115 MASSAPONAX CHURCH ROAD
FREDERICKSBURG, VA 22407 540-898-6300

OP-CHESAPEAKE-INFO@OLDCASTLE.COM

UV-333-KO

FILE NAME: 365UV333KO.DWG

ISSUE DATE: August, 2017

SCALE: 1/2" = 1'-0"

Utility Vault
3'-0" x 3'-0" x 3'-0" I.D.
Knockout

Copyright © 2017 Oldcastle Precast, Inc.

