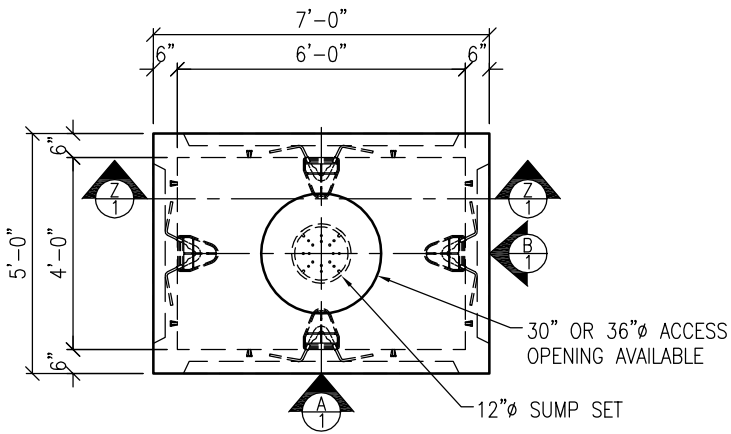
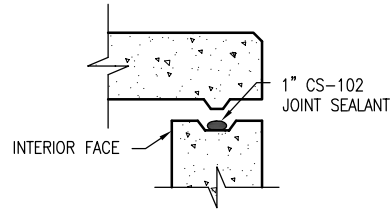


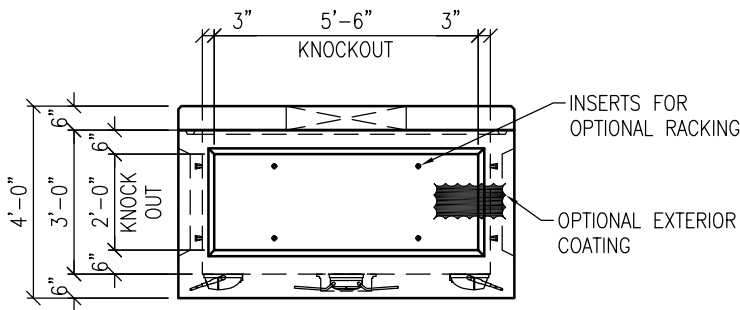
SHIP-LOOSE ITEMS		
QTY	DESCRIPTION	ITEM ID
2 ROLLS	JOINT SEALANT 1" x 14.5' CS-102	5439200
OLDCASTLE ID		
QTY	DESCRIPTION	ITEM ID
1 EA.	4 x 6 TOP SLAB w/ 30" OPG.	0051400
1 EA.	4 x 6 TOP SLAB w/ 36" OPG.	0051450
1 EA.	4 x 6 x 3 BASE	0050100



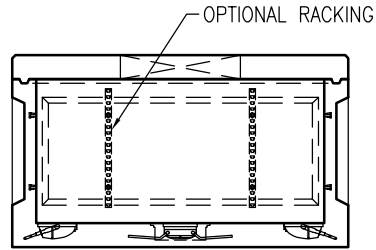
PLAN VIEW
SCALE: 1/4" = 1'-0"



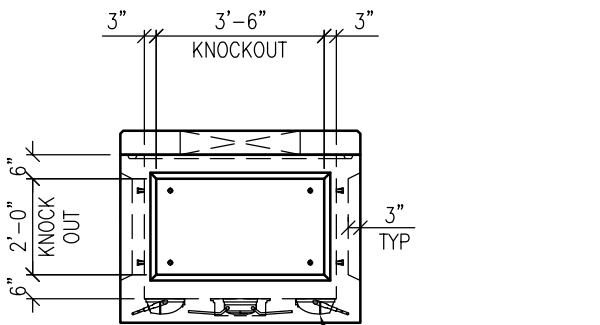
TOP SLAB WITH TONGUE & GROOVE JOINT
N.T.S.



VIEW A
SCALE: 1/4" = 1'-0"



SECTION Z
SCALE: 1/4" = 1'-0"



VIEW B
SCALE: 1/4" = 1'-0"

GENERAL NOTES:

1. CONCRETE F'C = 5,000 PSI.
2. REINFORCING STEEL, ASTM A-615
 - 2.1. FY = 60 KSI
3. DESIGN LIVE LOAD = HS-20
4. EARTH COVER = 0'-10" MIN. TO 3'-0" MAX.
5. BUTYL RUBBER JOINT SEALANT
6. CONTRACTOR TO:
 - 6.1. KNOCKOUT WINDOWS USED FOR DUCT BANKS SHALL BE FILLED WITH A MINIMUM OF 3000 PSI CONCRETE TIGHT TO THE UNDERSIDE OF THE UPPER SECTION FOR FULL THICKNESS OF WALL.

WEIGHTS:

- 4' x 6' TOP SLAB w/ 30" ACCESS: 1.15 TONS / 2296 LBS.
 4' x 6' TOP SLAB w/ 36" ACCESS: 1.07 TONS / 2134 LBS.
 4' x 6' x 3' BASE: 3.00 TONS / 6005 LBS.

Oldcastle Precast[®]
CHESAPEAKE
 1401 TRIMBLE ROAD
 EDGEWOOD, MD 21040 410-812-1213
 5115 MASSAPONAX CHURCH ROAD
 FREDERICKSBURG, VA 22407 540-898-6300

OPI-CHESAPEAKE-INFO@OLDCASTLE.COM

UV-463-KO

FILE NAME: 365UV463KO.DWG

ISSUE DATE: June, 2017

SCALE: 1/4" = 1'-0"

Utility Vault
 4'-0" x 6'-0" x 3'-0" I.D.
 Knockout

Copyright © 2017 Oldcastle Precast, Inc.

