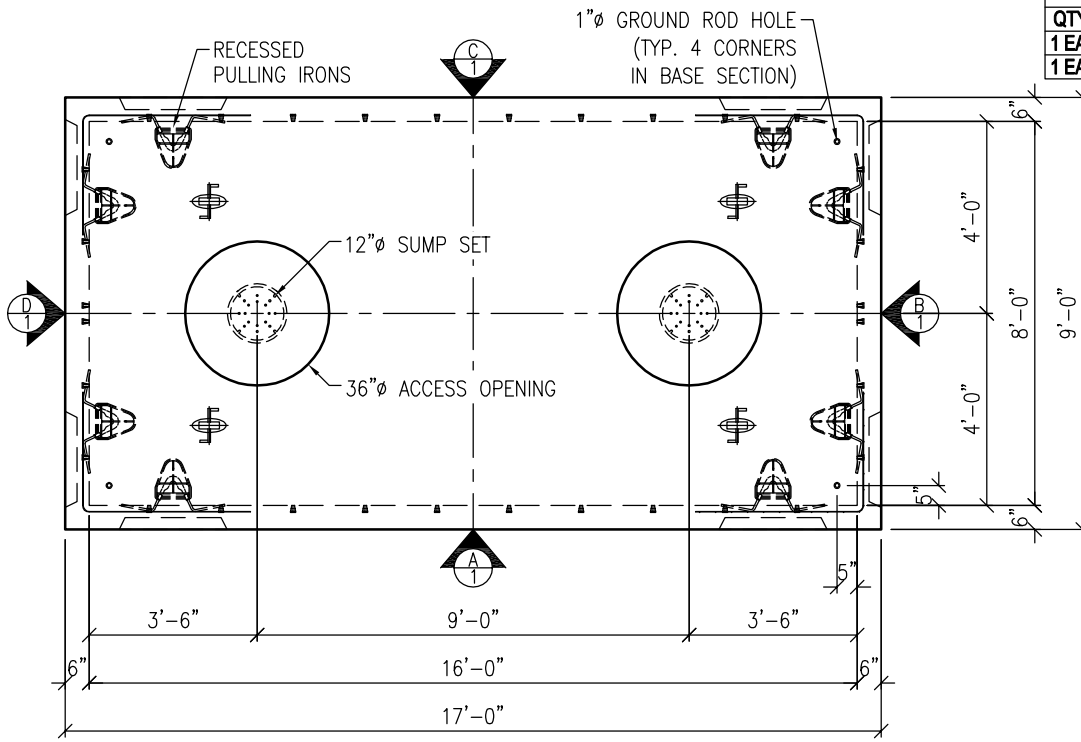
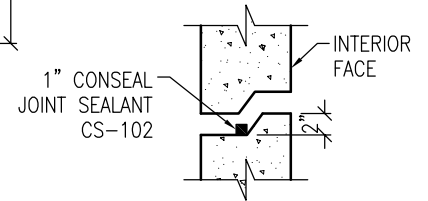


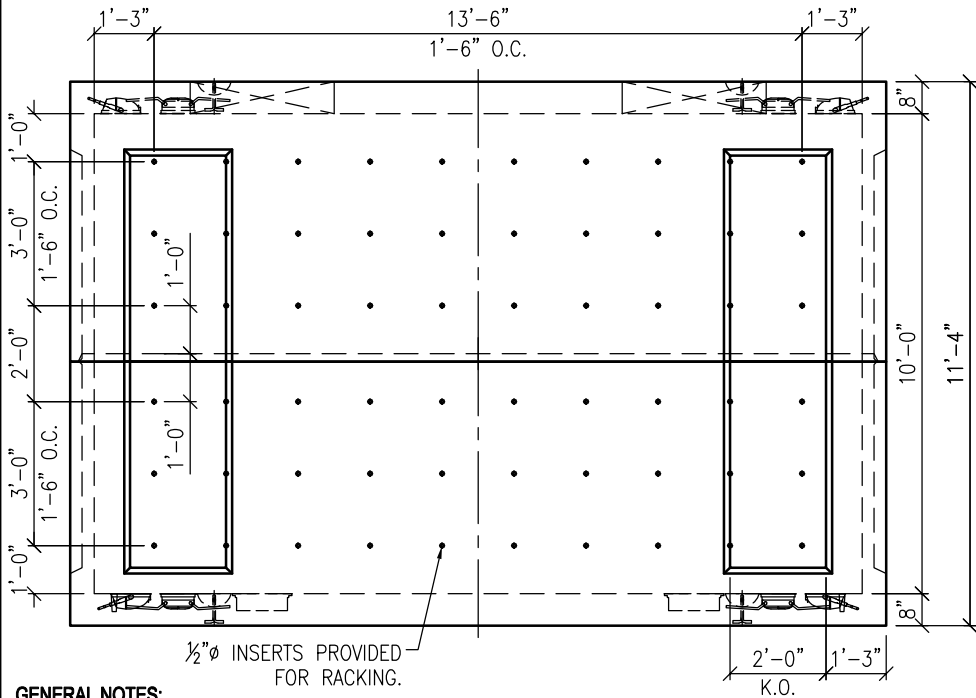
OLDCASTLE ID		
QTY	DESCRIPTION	ITEM ID
1 EA.	8x16x5 TOP DVP	0162250
1 EA.	8x16x5 BASE DVP	0162200



PLAN VIEW

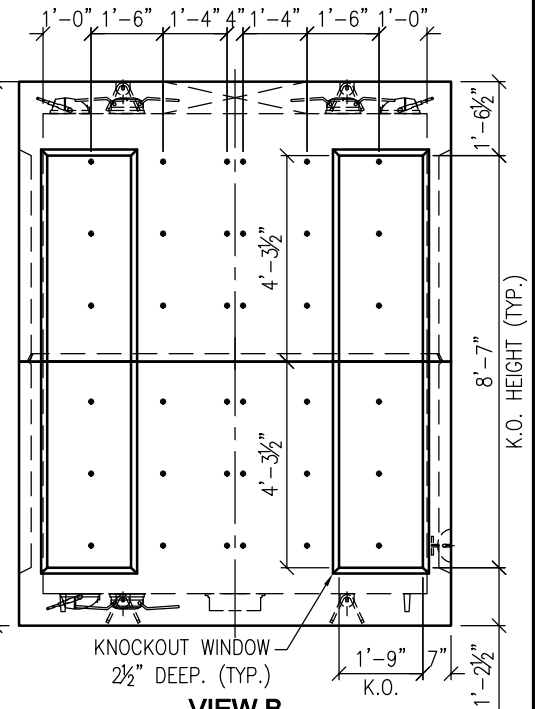


SHIPLAP JOINT DETAIL
N.T.S.



VIEW A

VIEW C IS TYPICAL



VIEW B

VIEW D IS TYPICAL

GENERAL NOTES:

1. CONCRETE FC = 5,000 PSI.
2. REINFORCING STEEL, ASTM A-615
 - 2.1. FY = 60 KSI
3. DESIGN LIVE LOAD = HS-20
4. EARTH COVER = 0'-10" MIN. TO 5'-0" MAX.
5. BUTYL RUBBER JOINT SEALANT
6. CONTRACTOR TO:
 - 6.1. KNOCKOUT WINDOWS USED FOR DUCT BANKS SHALL BE FILLED WITH A MINIMUM OF 3000 PSI CONCRETE TIGHT TO THE UNDERSIDE OF THE UPPER SECTION FOR FULL THICKNESS OF WALL.

WEIGHTS:

TOP WITH 36" ACCESS: 15.02 TONS / 30036 LBS.
BASE: 15.73 TONS / 31450 LBS.



Oldcastle Precast
CHESAPEAKE

1401 TRIMBLE ROAD
EDGEWOOD, MD 21040 410-812-1213
5115 MASSAPONAX CHURCH ROAD
FREDERICKSBURG, VA 22407 540-898-6300

OPI-CHESAPEAKE-INFO@OLDCASTLE.COM

UV-81610-DVP

FILE NAME: 365UV81610DVP.dwg

ISSUE DATE: January, 2018

SCALE: 1/4" = 1'-0"

Utility Vault
8'-0" x 16'-0" x 10'-0" I.D.
Dominion Power

Copyright © 2018 Oldcastle Precast, Inc.

