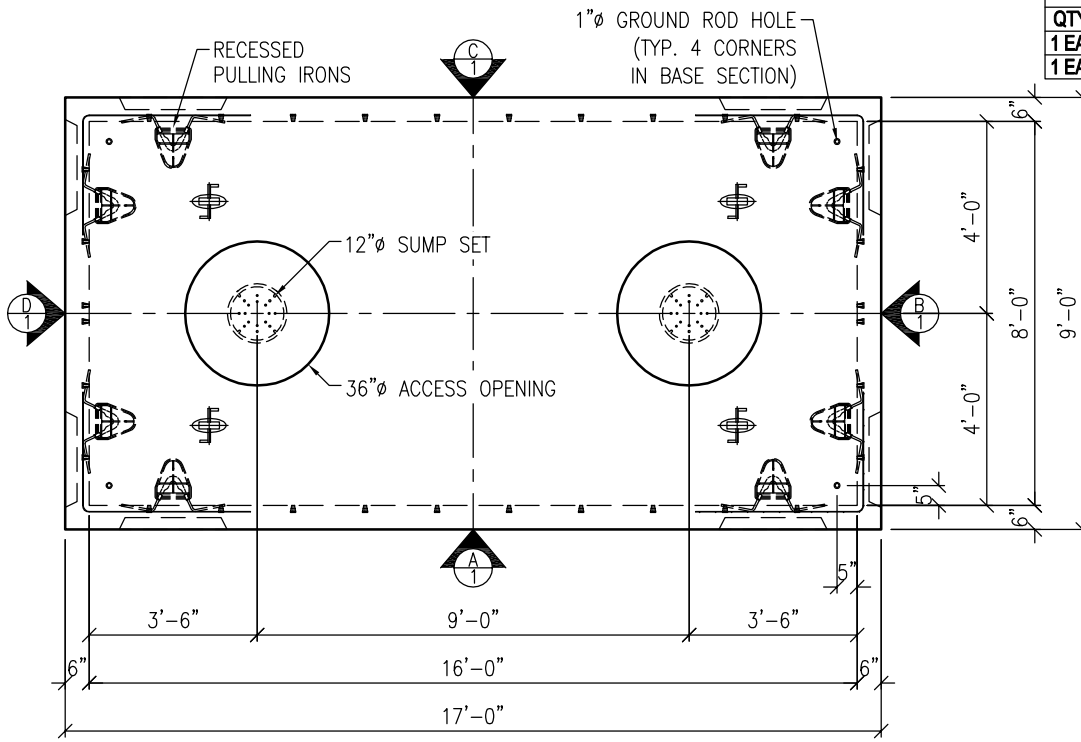
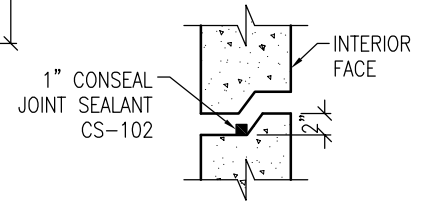


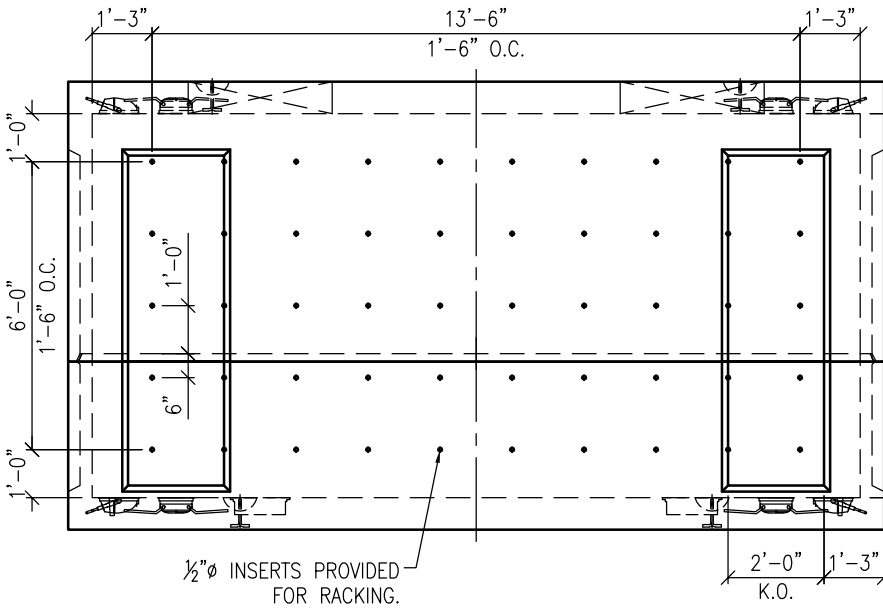
OLDCASTLE ID		
QTY	DESCRIPTION	ITEM ID
1 EA.	8x16x5 TOP DVP	0162250
1 EA.	8x16x3 BASE DVP	0162150



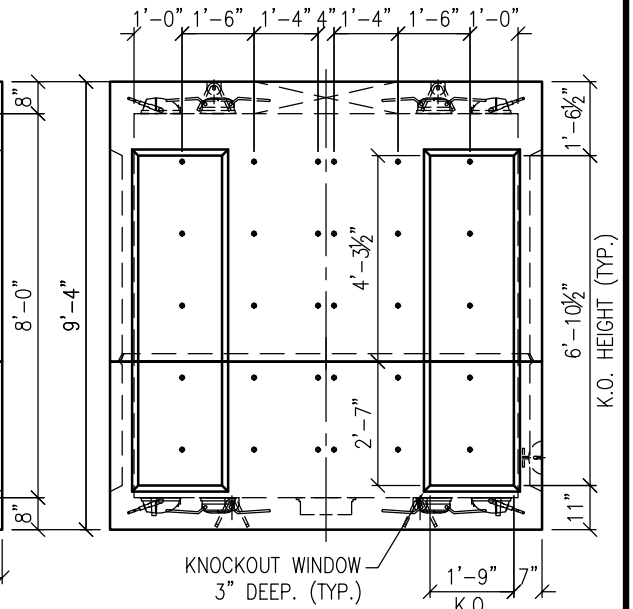
**PLAN VIEW**



**SHIPLAP JOINT DETAIL**  
N.T.S.



**VIEW A**  
VIEW C IS TYPICAL



**VIEW B**  
VIEW D IS TYPICAL

**GENERAL NOTES:**

1. CONCRETE FC = 5,000 PSI.
2. REINFORCING STEEL, ASTM A-615
  - 2.1. FY = 60 KSI
3. DESIGN LIVE LOAD = HS-20
4. EARTH COVER = 0'-10" MIN. TO 5'-0" MAX.
5. BUTYL RUBBER JOINT SEALANT
6. CONTRACTOR TO:
  - 6.1. KNOCKOUT WINDOWS USED FOR DUCT BANKS SHALL BE FILLED WITH A MINIMUM OF 3000 PSI CONCRETE TIGHT TO THE UNDERSIDE OF THE UPPER SECTION FOR FULL THICKNESS OF WALL.

**WEIGHTS:**

TOP WITH 36" ACCESS: 15.02 TONS / 30036 LBS.  
BASE: 12.50 TONS / 25000 LBS.



**Oldcastle Precast**<sup>®</sup>  
**CHESAPEAKE**

1401 TRIMBLE ROAD  
EDGEWOOD, MD 21040 410-812-1213  
5115 MASSAPONAX CHURCH ROAD  
FREDERICKSBURG, VA 22407 540-898-6300

OP-CHESAPEAKE-INFO@OLDCASTLE.COM

**UV-8168-DVP**

FILE NAME: 365UV8168DVP.dwg

ISSUE DATE: January, 2018

SCALE: 1/4" = 1'-0"

Utility Vault  
8'-0" x 16'-0" x 8'-0" I.D.  
Dominion Power

Copyright © 2018 Oldcastle Precast, Inc.

