

# Cell Blocks<sup>®</sup>

## Precast Foundation

Grade Level

Precast, Post-Tensioned

Reusable

Efficient



**Foundations  
in a Day**

Oldcastle Infrastructure Cell Blocks<sup>®</sup> are a cost-effective replacement for site built foundations for the communications industry. This precast, post-tensioned foundation system installs at grade level, without soil penetration, making Cell Blocks an ideal solution for remote sites with limited access for concrete trucks or drilling rigs, and environmentally or archaeologically sensitive sites.

# Expedite your schedule.

Pre-engineered Cell Blocks® require minimal site preparation, with block fabrication running concurrently with the permitting process, allowing for aggressive scheduling and typically resulting in a 75% reduction in construction time. The foundation can typically be deployed in one day, and once the blocks are post tensioned, the foundation is full strength. No time delay for curing time associated with traditional methods.

## Cell Blocks are designed for:

- Monopoles
- Lattice Towers
- Shelters
- Equipment Cabinets
- Power/Telco Pedestals
- Precast Walls
- Chain Link Fencing
- Stairs

## Design and Engineering

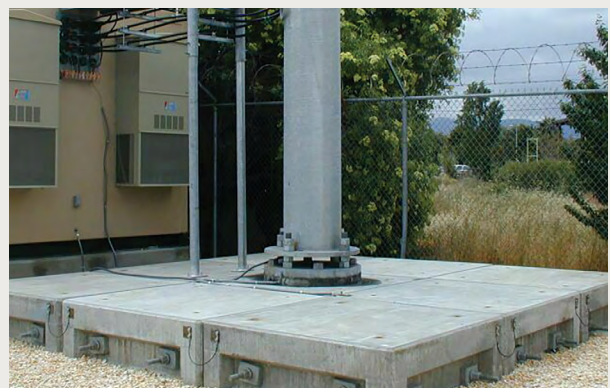
- Pre-engineered with site specific configurations
- Widely accepted by regulatory agencies
- Includes specific wet stamped drawings and calculations
- Low average soil pressure of 1,500ps

## Construction

- Concurrent with permitting process
- Minimal site preparation required
- No delays due to cure time
- Stairs and precast walls create a comprehensive rapid deployment system

## 3 Day Installation

- Day 1 - Site preparation
- Day 2 - Set blocks, shelter, and monopole
- Day 3 - Outfitting, connect electrical service, install waveguides and antennas, equipment installation



4-A-048 Revision 4/2023

Trusted partnerships.  
Full scale solutions.



[www.oldcastleinfrastructure.com](http://www.oldcastleinfrastructure.com) | (888) 965-3227