

444-TRANS-SECT-PCORP

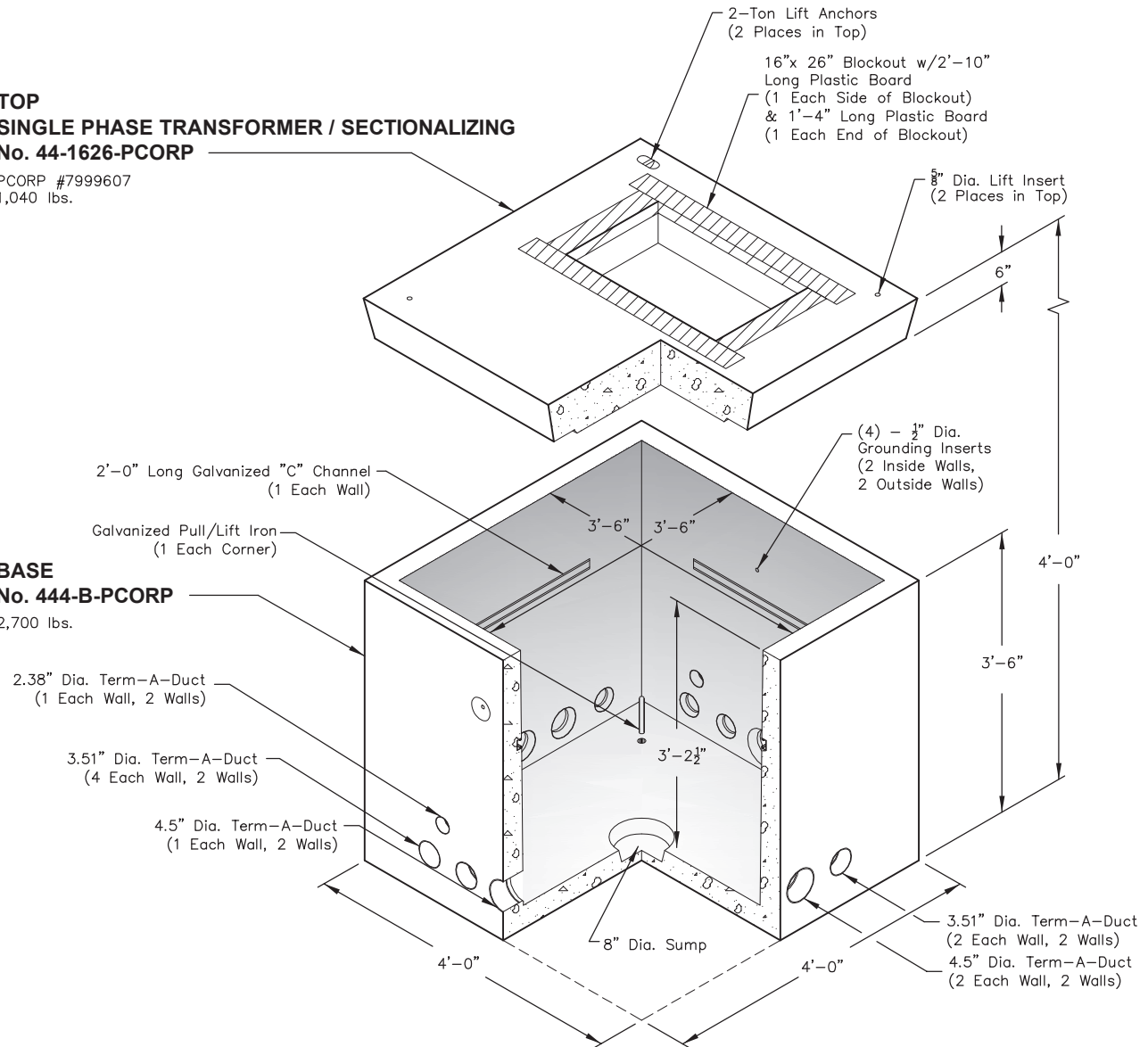
4 x 4, Single Phase Transformer / Sectionalizing Padvault, Stock Item 7999607

TOP
SINGLE PHASE TRANSFORMER / SECTIONALIZING
No. 44-1626-PCORP

PCORP #7999607
1,040 lbs.

BASE
No. 444-B-PCORP

2,700 lbs.



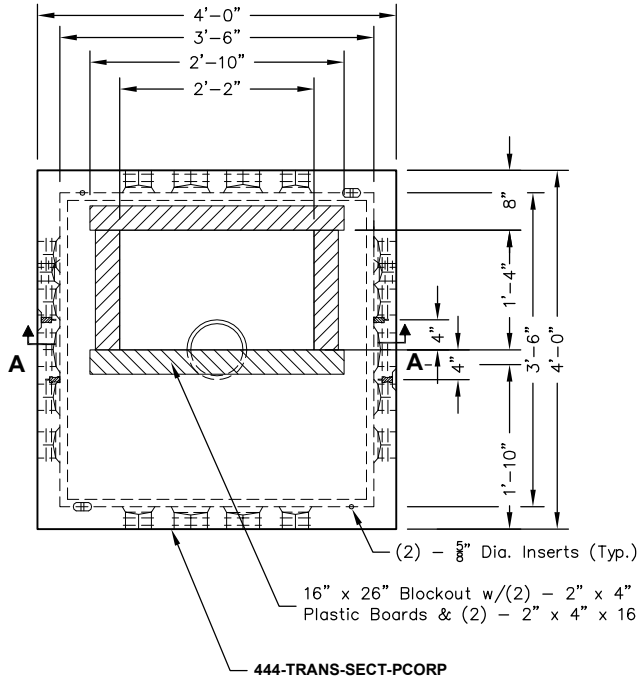
Scale: 1/2" = 1'-0"

Non Skid Covers Available

FOR DETAILS, SEE REVERSE>>

Items Shown Are Subject To Change Without Notice
Issue Date: April 2016

444-TRANS-SECT-PCORP

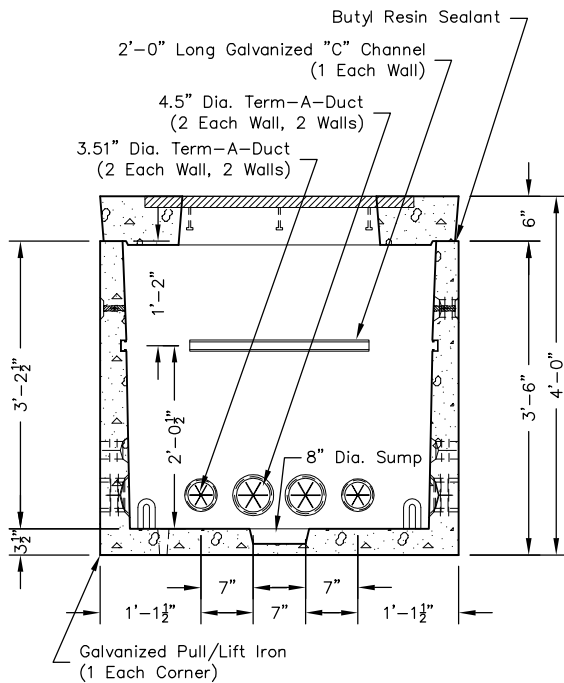


CABINET
HOLD-DOWN CLEAT
(4) - REQUIRED

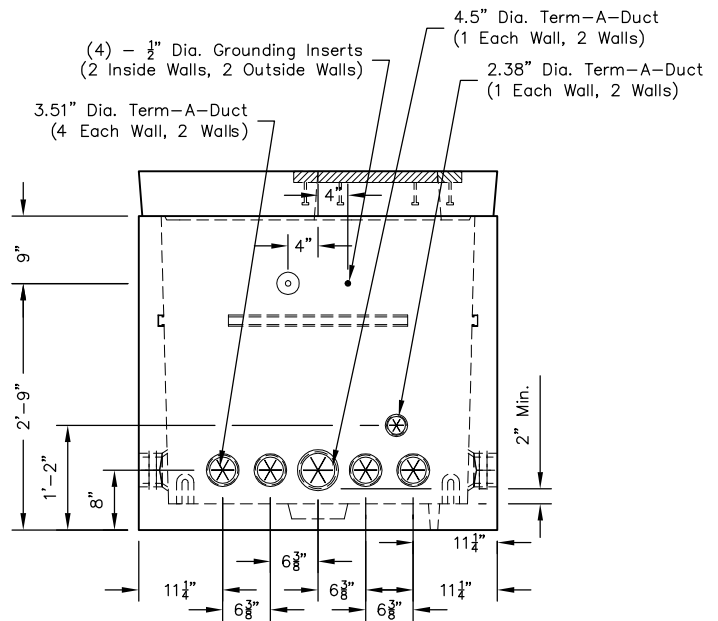
- 1 1/4" x 2 1/2" Stainless Steel Hold-Down Cleat
- 1/2" x 2" Galvanized Lag Screw
- 1/2" Stainless Steel Bellville Washer

PLAN VIEW

No. 44-1626-PCORP (SINGLE PHASE TRANSFORMER / SECTIONALIZING TOP)
PCORP #7999607



SECTION AA



END VIEW

Scale: 1/2" = 1'-0"