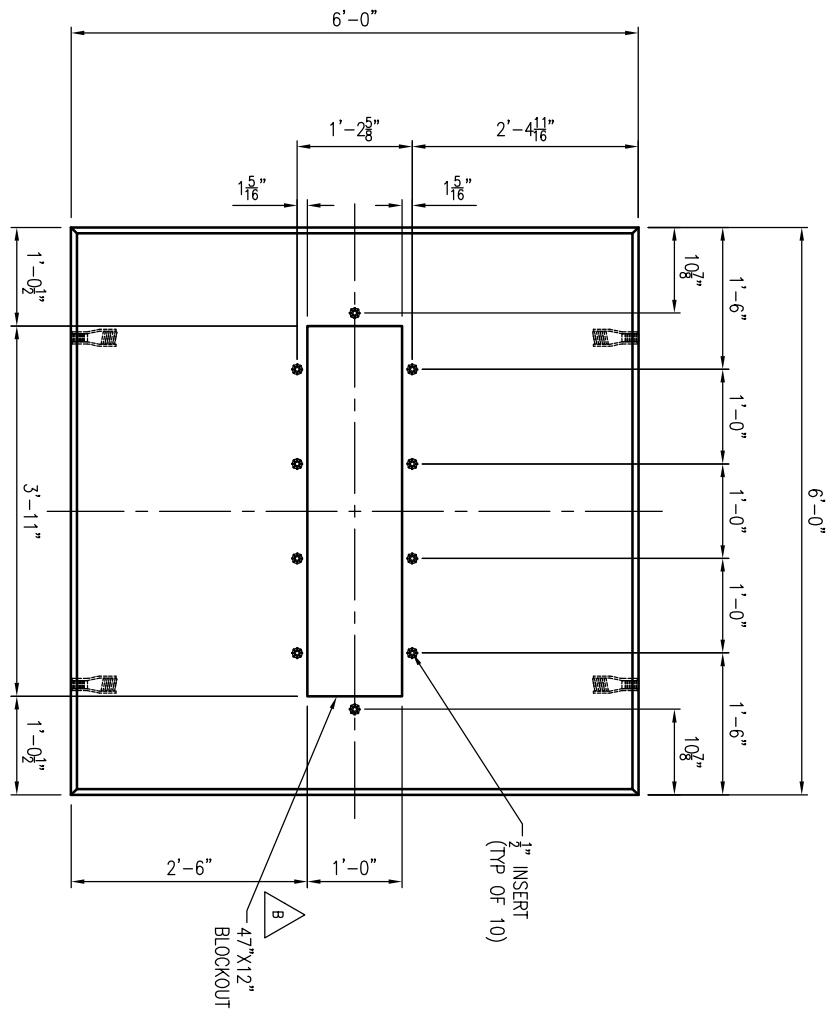
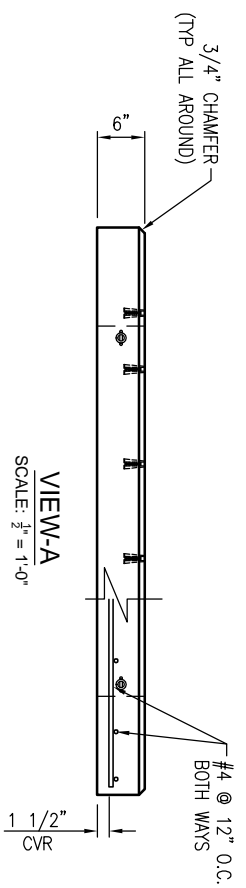


GENERAL NOTES:

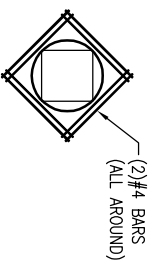
1. CONCRETE: 28 DAY COMPRESSIVE STRENGTH F'c = 4,500 PSI (MIN).
2. REINFORCING: ASTM A-615, GRADE 60.
3. SLAB DESIGNED FOR 432-864 FONZ CABINET LOAD ONLY.
4. SLAB DESIGNED FOR 150 MPH WIND LOAD, IN ACCORDANCE WITH ASCE 7-10.
5. SLAB SHALL BE SUPPORTED IN ACCORDANCE WITH AT&T PROJECT SPECIFICATIONS (I.E. LEVEL AND COMPACTED BEARING SURFACE).



PLAN VIEW
SCALE: $\frac{1}{2}'' = 1'-0''$



VIEW-A
SCALE: $\frac{1}{2}'' = 1'-0''$



TYPICAL REINFORCEMENT FOR OPENINGS
SCALE: N.T.S.

1. USE EXACT BAR SIZE AND SPACING AS NOTED ABOVE.
2. ALL STEEL CUT OUT FOR OPENINGS WILL BE REPLACED. HALF REINFORCEMENT ON EACH SIDE OF OPENING. INCLUDE (2) ADDITIONAL #4 DIAGONAL BARS AROUND OPENING (SEE TYPICAL REINFORCEMENT FOR ALL OPENINGS)

REVISIONS

REVISION	DATE	BY	SHEET	DESCRIPTION OF REVISION	REQUESTED BY
A	5/14/2013	LD	1	ADDED AT&T PIN NUMBER TO TITLEBLOCK	CONTRACTOR
B	6/21/2013	LD	1	DECREASED WIDTH OF BLOCKOUT (1'')	CONTRACTOR

SECTION	WEIGHT (lbs)	CONCRETE (CY)
TOTAL	2,400	0.59



THIS DOCUMENT IS THE PROPERTY OF OLDCASTLE PRECAST, INC. IT IS CONFIDENTIAL, SUBMITTED FOR REFERENCE PURPOSES ONLY, AND SHALL NOT BE USED IN ANY WAY INJURIOUS TO THE INTERESTS OF, OR WITHOUT THE WRITTEN PERMISSION OF OLDCASTLE PRECAST, INC. COPYRIGHT © 2010 OLDCASTLE PRECAST, INC. ALL RIGHTS RESERVED.

6'X6'X6" OD 432/864 FONZ PAD
SUBMITTAL LAYOUT

CUSTOMER: AT&T (PIN# ATT.100029791)			
DATE: 6/24/14	SALES: _____	DRAWN: _____	ENGINEER: _____
DRAWING NUMBER: 432-864 Fonz 6x6 Pad	REVISION: B	CHECKED: _____	SALES ORDER: _____
	DATE: 06/21/13		SHEET: 1 OF 1