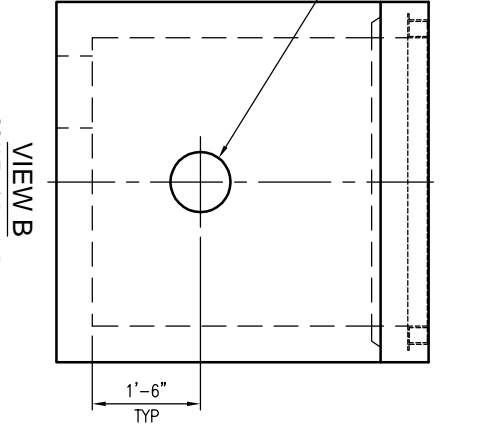
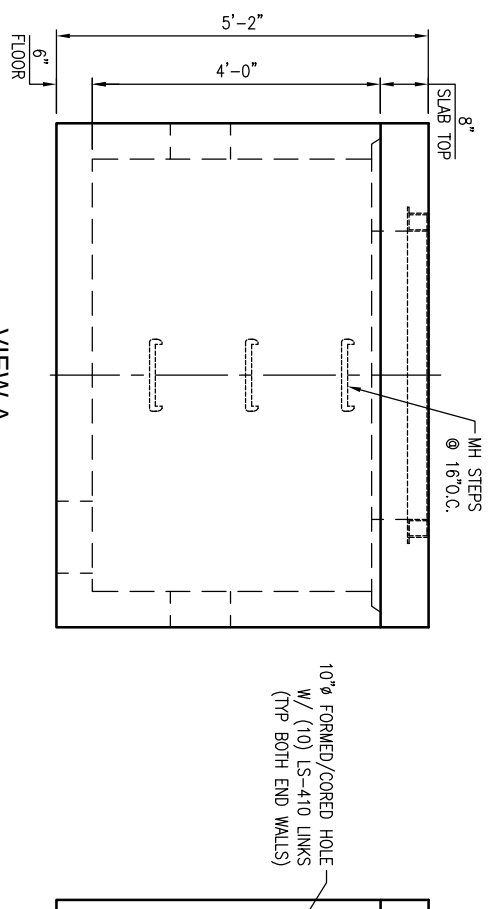
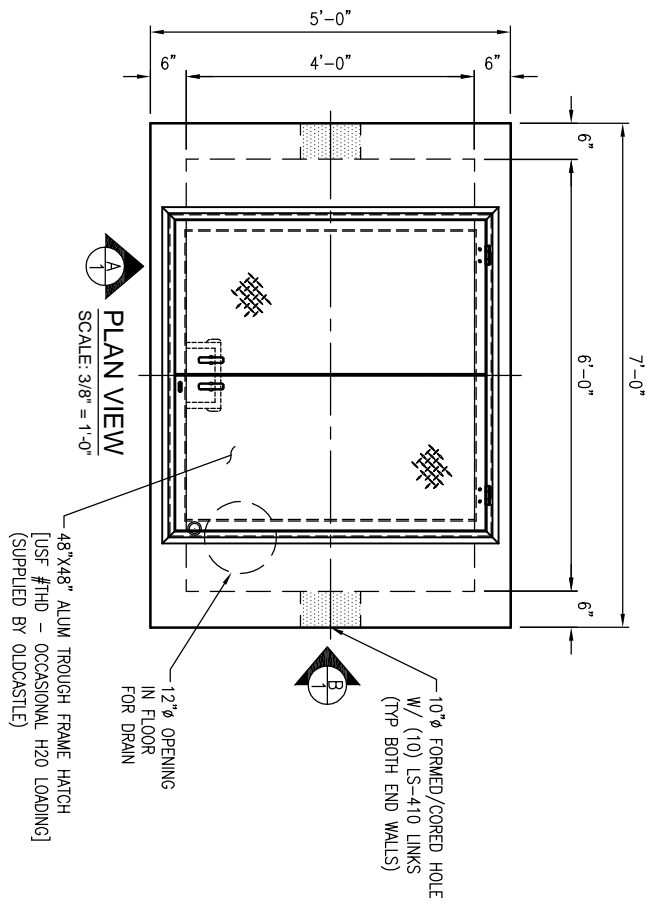


GENERAL DESIGN NOTES:

- STRENGTH DESIGN METHOD IN ACCORDANCE WITH (I.A.W.) ACI 318.
- APPLICABLE DESIGN DOCUMENTS (CURRENT EDITIONS):
 - ACI 318 BUILDING CODE REQUIREMENTS FOR STRUCTURAL CONCRETE (MAIN DESIGN SPECIFICATION),
 - ASTM C990 STANDARD PRACTICE FOR MINIMUM STRUCTURAL LOADING FOR MONOLITHIC OR SECTIONAL PRECAST CONCRETE WATER AND WASTEWATER STRUCTURES (LOADING SPECIFICATION)
 - ASTM C913 STANDARD SPECIFICATION FOR PRECAST CONCRETE WATER AND WASTEWATER STRUCTURES (PRODUCT SPECIFICATION).
- PRECAST RATED FOR HS20-44 TRUCK LIVE LOAD W/ IMPACT I.A.W. ASTM C990.
- DESIGN FILL: AT GRADE.
- GROUND WATER TABLE ASSUMED AT 3'-6" BELOW GRADE.. IF DESIGN (OR ACTUAL) WATER TABLE IS LESS THAN ASSUMED, REVIEWING ENGINEER TO NOTIFY OLDCASTLE PRECAST UPON REVIEW OF THIS SUBMITTAL.
- LATERAL DESIGN PRESSURES (AS APPLICABLE TO DESIGN, SEE CALCULATIONS):
 - EQUIV DRY SOIL FLUID PRESSURE = 47 PCF.
 - EQUIV SATURATED SOIL FLUID PRESSURE = 86 PCF.
 - LIVE LOAD SURCHARGE PRESSURE = 80 PSF.
 - HYDROSTATIC WATER PRESSURE = 62.4 PCF.
- DESIGN CONCRETE COMPRESSIVE STRENGTH AT 28 DAYS = 6,000 PSI (MIN).
- REINFORCEMENT:
 - CARBON-STEEL DEFORMED BARS: ASTM A615, fy = 60KSI (MIN).
- JOINT SEALANT (AS DETAILED AND NOTED IN DRAWINGS HEREIN):
 - CS-102 CONSEAL BUTYL RUBBER SEALANT (OR EQUIV.) I.A.W. ASTM C990 FED. SPEC. SS-S-210.
- PRECAST DESIGN DOES NOT INCLUDE ANY LATERAL OR SURCHARGE LOADS FROM OTHER BUILDINGS OR FOUNDATIONS ADJACENT TO THIS STRUCTURE. THIS STRUCTURE SHALL BE KEPT A MINIMUM OF 1:1 RATIO AWAY FROM OTHER FOOTINGS OR FOUNDATIONS.



NOTES TO CONTRACTOR:

- PLEASE VERIFY ALL SIZES, LOCATIONS, AND ELEVATIONS OF OPENINGS.
- THE CONTRACTOR SHALL BE RESPONSIBLE FOR PROPER COORDINATION TO ENSURE THAT AN ADEQUATE BEARING SURFACE IS PROVIDED (I.E. LEVEL AND COMPACTED) PER PROJECT SPECIFICATIONS AND DRAWINGS.
- AFTER PIPES ARE INSTALLED IN BLOCKOUTS, ALL ANNULAR SPACES SHALL BE FILLED WITH A MIN. OF 3,000 PSI CONCRETE, TIGHT TO THE UNDERSIDE OF UPPER SECTION FOR FULL THICKNESS OF VAULT WALL.

WEIGHTS	
SECTION	Weight (lb)
8" SLAB TOP	3,600
4.50' BASE	9,300
	Concrete (CY)
	0.89
	2.30



THIS DOCUMENT IS THE PROPERTY OF OLDCASTLE PRECAST, INC. IT IS CONFIDENTIAL, SUBMITTED FOR REFERENCE PURPOSES ONLY, AND SHALL NOT BE USED IN ANY WAY WITHOUT THE INTERESTS OF, OR WITHOUT THE WRITTEN PERMISSION OF OLDCASTLE PRECAST, INC. COPYRIGHT © 2014 OLDCASTLE PRECAST, INC. ALL RIGHTS RESERVED

4'X6'X4' ID METER VAULT

SUBMITTAL LAYOUT
6" WATER METER VAULT

HARRETT COUNTY
CUSTOMER

DATE	SALES	DRAWN	ENGINEER	CHECKED	SALES ORDER
11/17/16	LD	EMT			
	DRAWING NUMBER	REVISION	SHEET		
	48ANV-6Harmel	REV DATE	1 OF 1		

REVISIONS

REV	DATE	BY	SHEET	DESCRIPTION OF REVISION	REQUESTED BY
A					
B					
C					
D					

APPROVED W/ NO EXCEPTIONS TAKEN:

APPROVED AS NOTED:

REVISED AND RESUBMIT:

SIGNATURE _____ DATE _____

THIS MUST BE FILLED OUT BEFORE MANUFACTURING BEGINS.

VIEW A
SCALE: 3/8" = 1'-0"

VIEW B
SCALE: 3/8" = 1'-0"