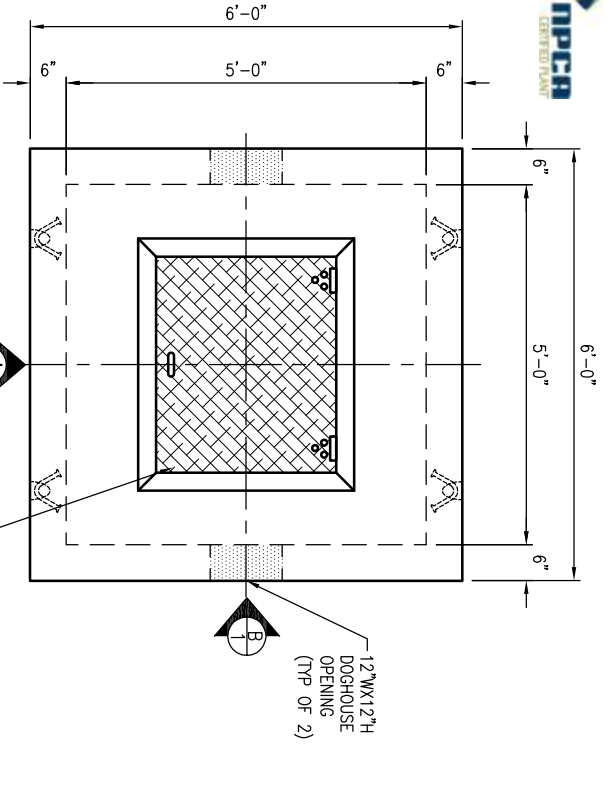


GENERAL DESIGN NOTES:

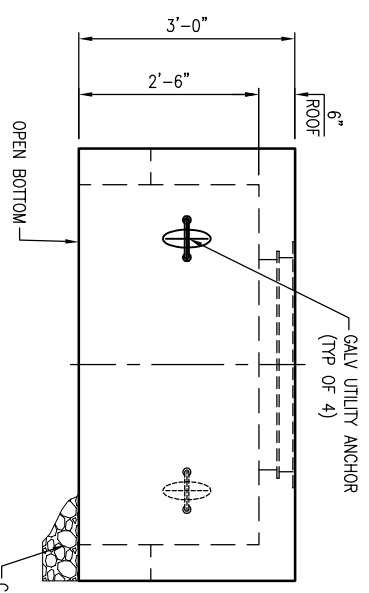
1. STRENGTH DESIGN METHOD IN ACCORDANCE WITH (I.A.W.) ACI 318.
2. APPLICABLE DESIGN DOCUMENTS (CURRENT EDITIONS):
 - ACI 318 BUILDING CODE REQUIREMENTS FOR STRUCTURAL CONCRETE (MAIN DESIGN SPECIFICATION),
 - ASTM C890 STANDARD PRACTICE FOR MINIMUM STRUCTURAL LOADING FOR MONOLITHIC OR SECTIONAL PRECAST CONCRETE WATER AND WASTEWATER STRUCTURES (LOADING SPECIFICATION),
 - ASTM C913 STANDARD SPECIFICATION FOR PRECAST CONCRETE WATER AND WASTEWATER STRUCTURES (PRODUCT SPECIFICATION).
3. PRECAST RATED FOR HS20-44 TRUCK LIVE LOAD W/ IMPACT I.A.W. ASTM C890.
4. DESIGN FILL: AT GRADE.
5. GROUND WATER TABLE ASSUMED BELOW INVERT OF BOX. IF DESIGN (OR ACTUAL) WATER TABLE IS LESS THAN ASSUMED, REVIEWING ENGINEER TO NOTIFY OLDCASTLE PRECAST UPON REVIEW OF THIS SUBMITTAL.
6. LATERAL DESIGN PRESSURES (AS APPLICABLE TO DESIGN, SEE CALCULATIONS):
 - EQUIV DRY SOIL FLUID PRESSURE = 47 PCF.
 - EQUIV SATURATED SOIL FLUID PRESSURE = 88 PCF.
 - LIVE LOAD SURCHARGE PRESSURE = 80 PSF.
 - HYDROSTATIC WATER PRESSURE = 82.4 PCF.
7. DESIGN CONCRETE COMPRESSIVE STRENGTH AT 28 DAYS = 4,000 PSI (MIN).
8. REINFORCEMENT:
 - CARBON-STEEL, DEFORMED BARS, ASTM A615, $f_y = 60$ KSI (MIN).
9. PRECAST DESIGN DOES NOT INCLUDE ANY LATERAL OR SURCHARGE LOADS FROM OTHER BUILDINGS OR FOUNDATIONS ADJACENT TO THIS STRUCTURE. THIS STRUCTURE SHALL BE KEPT A MINIMUM OF 1:1 RATIO AWAY FROM OTHER FOOTINGS OR FOUNDATIONS.

NOTES TO CONTRACTOR:

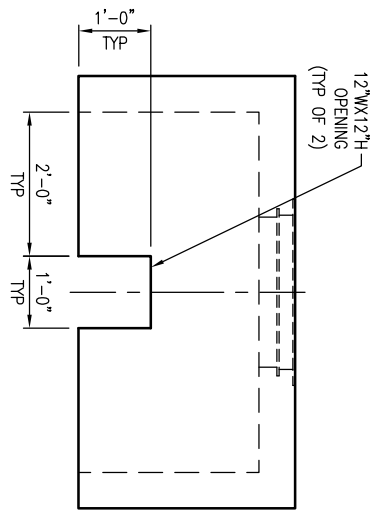
1. PLEASE VERIFY ALL SIZES, LOCATIONS, AND ELEVATIONS OF OPENINGS.
2. THE CONTRACTOR SHALL BE RESPONSIBLE FOR PROPER COORDINATION TO ENSURE THAT AN ADEQUATE BEARING SURFACE IS PROVIDED (I.E. LEVEL AND COMPACTED) PER PROJECT SPECIFICATIONS AND DRAWINGS.
3. AFTER PIPES ARE INSTALLED IN BLOCKOUTS, ALL ANNULAR SPACES SHALL BE FILLED WITH A MIN. OF 3,000 PSI CONCRETE, TIGHT TO THE UNDERSIDE OF UPPER SECTION FOR FULL THICKNESS OF VAULT WALL.



PLAN VIEW
SCALE: 3/8" = 1'-0"



VIEW A
SCALE: 3/8" = 1'-0"



VIEW B
SCALE: 3/8" = 1'-0"

THIS MUST BE FILLED OUT BEFORE MANUFACTURING BEGINS.

APPROVED W/ NO EXCEPTIONS TAKEN:

APPROVED AS NOTED:

REVISED AND RESUBMIT:

APPROVED BY: _____ DATE: _____
 REQUESTED BY: _____
 SIGNATURE: _____

SECTION	WEIGHT (lbs)	CONCRETE(CY)
TOTAL	6,700	

4065 STOUGH RD. CONCORD, NC
 OFFICE 704-786-4901 FAX 704-786-4900
 NC ENGINEERING LICENSE #F-1092

THIS DOCUMENT IS THE PROPERTY OF OLDCASTLE PRECAST, INC. IT IS CONFIDENTIAL, SUBMITTED FOR REFERENCE PURPOSES ONLY, AND SHALL NOT BE USED IN ANY WAY IN VIOLATION TO THE INTERESTS OF, OR WITHOUT THE WRITTEN PERMISSION OF OLDCASTLE PRECAST, INC. COPYRIGHT © 2017 OLDCASTLE PRECAST, INC. ALL RIGHTS RESERVED.

5X5' ID METER VAULT
 SUBMITTAL LAYOUT
 2" WATER METER VAULT

CUSTOMER			
ORANGE WATER AND SEWER AUTHORITY			
DATE	SALES	DRAWN	ENGINEER
5/23/16	LD	EMT	CHECKED
DRAWING NUMBER	559M1-2-OWMSA	REVISION	SHEET
		1 OF	1

REV	DATE	BY	SHEET	DESCRIPTION OF REVISION
A				
B				

REVISIONS