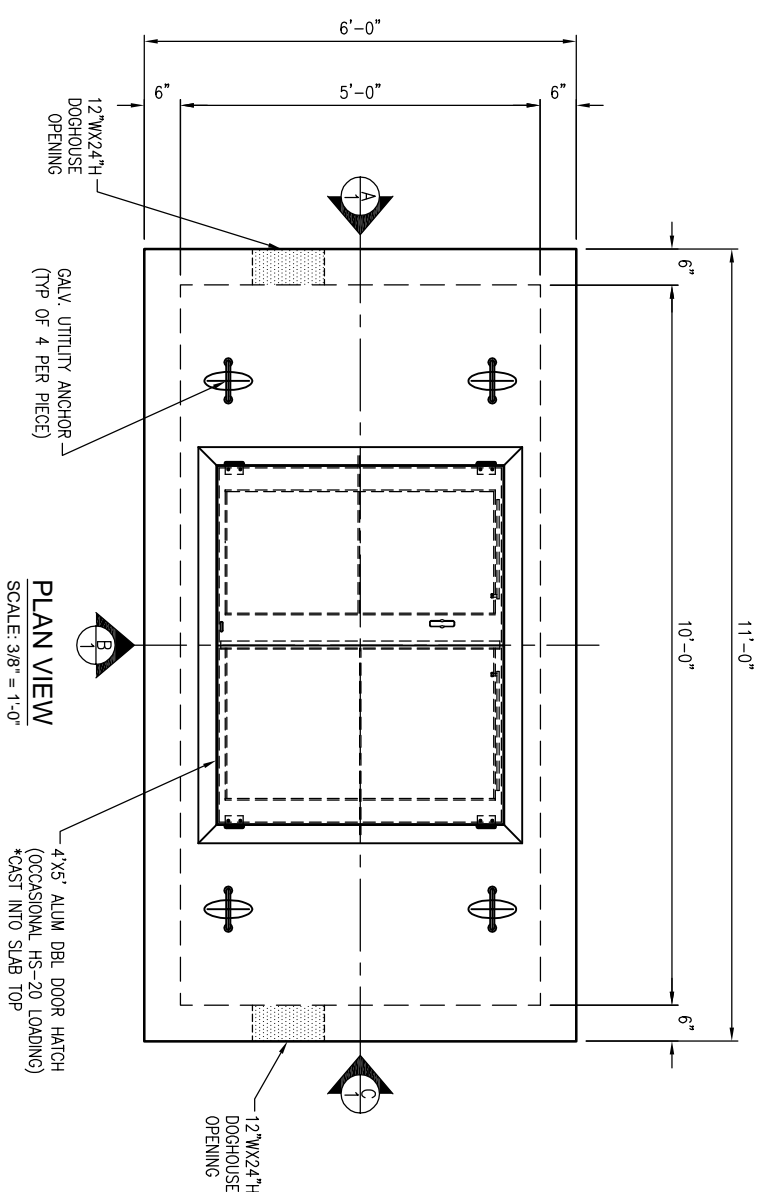


GENERAL DESIGN NOTES:

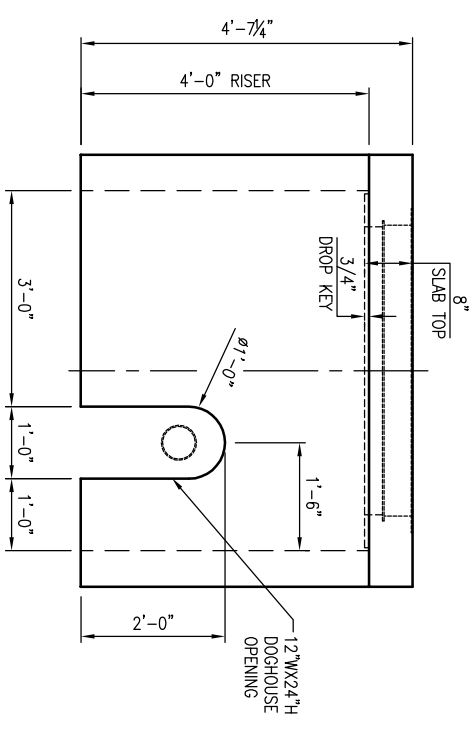
- STRENGTH DESIGN METHOD IN ACCORDANCE WITH (LAW), ACI 318.
- APPLICABLE DESIGN DOCUMENTS (CURRENT EDITIONS):
 - ACI 318 BUILDING CODE REQUIREMENTS FOR STRUCTURAL CONCRETE (MAIN DESIGN SPECIFICATION),
 - ASTM C890 STANDARD PRACTICE FOR MINIMUM STRUCTURAL LOADING FOR MONOLITHIC OR SECTIONAL PRECAST CONCRETE WATER AND WASTEWATER STRUCTURES (LOADING SPECIFICATION),
 - ASTM C913 STANDARD SPECIFICATION FOR PRECAST CONCRETE WATER AND WASTEWATER STRUCTURES (PRODUCT SPECIFICATION).
- PRECAST RATED FOR HS20-44 TRUCK LIVE LOAD W/IMPACT LAW, ASTM C890.
- DESIGN FILL: AT GRADE.
- GROUND WATER TABLE ASSUMED AT 3'-6" BELOW GRADE. IF DESIGN (OR ACTUAL) WATER TABLE IS LESS THAN ASSUMED, REVIEWING ENGINEER TO NOTIFY OLDCASTLE PRECAST UPON REVIEW OF THIS SUBMITTAL.
- LATERAL DESIGN PRESSURES (AS APPLICABLE TO DESIGN, SEE CALCULATIONS):
 - EQUIV DRY SOIL FLUID PRESSURE = 47 PCF.
 - EQUIV SATURATED SOIL FLUID PRESSURE = 65 PCF.
 - LIVE LOAD SURCHARGE PRESSURE = 80 PSF.
 - HYDROSTATIC WATER PRESSURE = 62.4 PCF.
- DESIGN CONCRETE COMPRESSIVE STRENGTH AT 28 DAYS = 4,000 PSI (MIN).
- REINFORCEMENT: OLDCASTLE PE (DESIGN ENGINEER) MAY SUBSTITUTE THE REINFORCEMENT SHOWN HEREIN TO AN EQUIVALENT REINFORCEMENT ALTERNATIVE NOTED BELOW.
 - CARBON-STEEL DEFORMED BARS: ASTM A615, fy = 60 KSI (MIN).
 - WELDED WIRE REINFORCEMENT - DEFORMED: ASTM A1064, fy = 70 KSI (MIN).
 - WELDED WIRE REINFORCEMENT - FLANK: ASTM A1094, fy = 65 KSI (MIN).
- JOINT SEALANT (AS DETAILED AND NOTED IN DRAWINGS HEREIN):
 - CS-102 CONSERAL BUTYL RUBBER SEALANT (OR EQUIV.), LAW, ASTM C990 FED. SPEC. SS-9-210.
- PRECAST DESIGN DOES NOT INCLUDE ANY LATERAL OR SURCHARGE LOADS FROM OTHER BUILDINGS OR FOUNDATIONS ADJACENT TO THIS STRUCTURE. THIS STRUCTURE SHALL BE KEPT A MINIMUM OF 1:1 RATIO AWAY FROM OTHER FOOTINGS OR FOUNDATIONS.

NOTES TO CONTRACTOR:

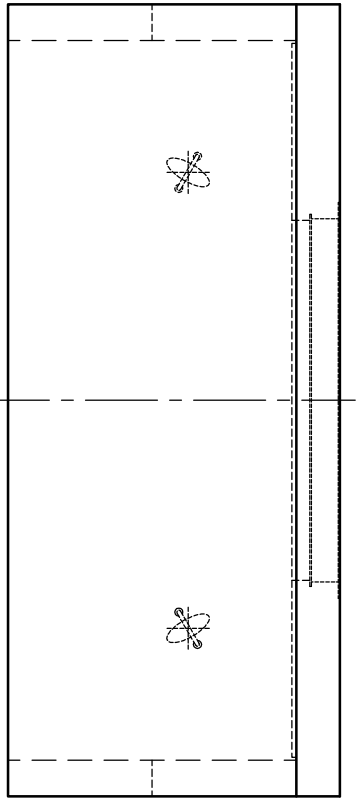
- PLEASE VERIFY ALL SIZES, LOCATIONS, AND ELEVATIONS OF OPENINGS.
- CONTRACTOR SHALL PROVIDE ALL FITTINGS, PIPING, ETC. PER PWC SPECIFICATIONS.
- CONTRACTOR SHALL BACKFILL DOGHOUSE OPENINGS WITH BRICK AND MORTAR PER PWC SPECIFICATIONS.
- CONTRACTOR SHALL PROVIDE 12" GRAVEL BASE AND CAP BLOCK FOOTING PER PWC SPECIFICATIONS (I.E. LEVEL AND COMPACTED).



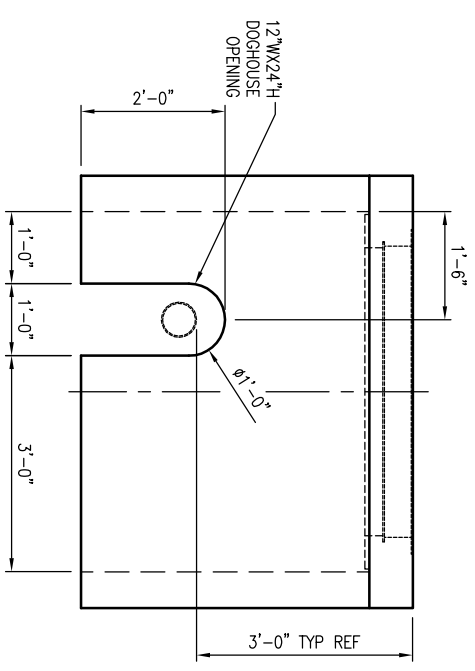
PLAN VIEW
SCALE: 3/8" = 1'-0"



VIEW A
SCALE: 3/8" = 1'-0"



VIEW B
SCALE: 3/8" = 1'-0"



VIEW C
SCALE: 3/8" = 1'-0"

WEIGHTS		
SECTION	WEIGHT (lb)	CONCRETE (CY)
8" SLAB TOP	6,600	1.63
48" RISER	9,400	2.32
TOTAL	16,000	



THIS DOCUMENT IS THE PROPERTY OF OLDCASTLE PRECAST, INC. IT IS LOANED TO THE USER FOR REFERENCE PURPOSES ONLY, AND SHALL NOT BE USED IN ANY WAY WITHOUT THE WRITTEN PERMISSION OF OLDCASTLE PRECAST, INC. COPYRIGHT © 2014 OLDCASTLE PRECAST, INC. ALL RIGHTS RESERVED.

THIS MUST BE FILLED OUT BEFORE MANUFACTURING BEGINS

APPROVED W/ NO EXCEPTIONS TAKEN:

APPROVED AS NOTED:

REVISED AND RESUBMIT:

SIGNATURE: _____ DATE: _____

5X10' ID METER VAULT
SUBMITTAL LAYOUT
3' TO 4" WATER METER VAULT
FAYETTEVILLE, NC

CUSTOMER: **FAYETTEVILLE WATER RESOURCES DEPT**

DATE	SUBS	DESIGN	ENGINEER	CHECKED	SALES ORDER
7/14/17	LD	EMT			

DRAWING NUMBER	REVISION	SHEET
510MVF-Fayetteville	REV/DATE	1 OF 1

REVISIONS

REVISION	DATE	BY	SHEET	DESCRIPTION OF REVISION	REQUESTED BY
A					
B					