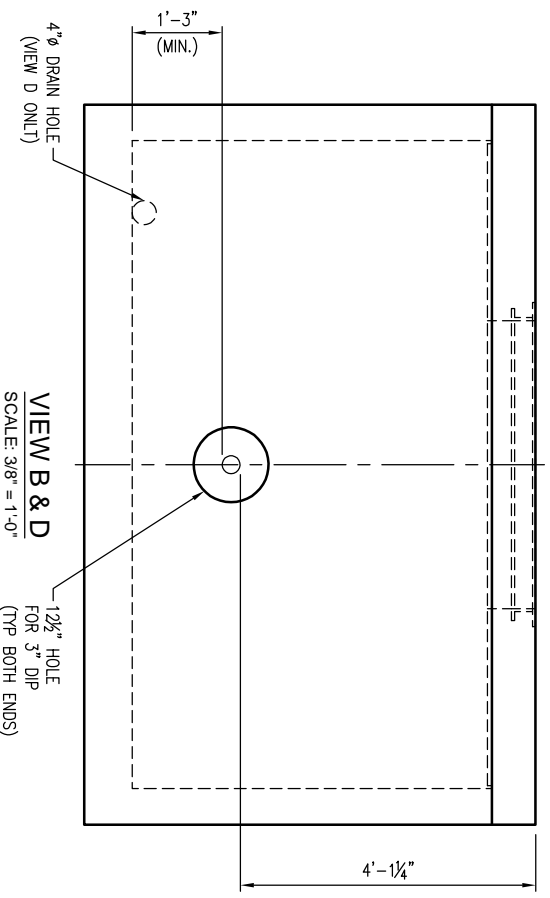
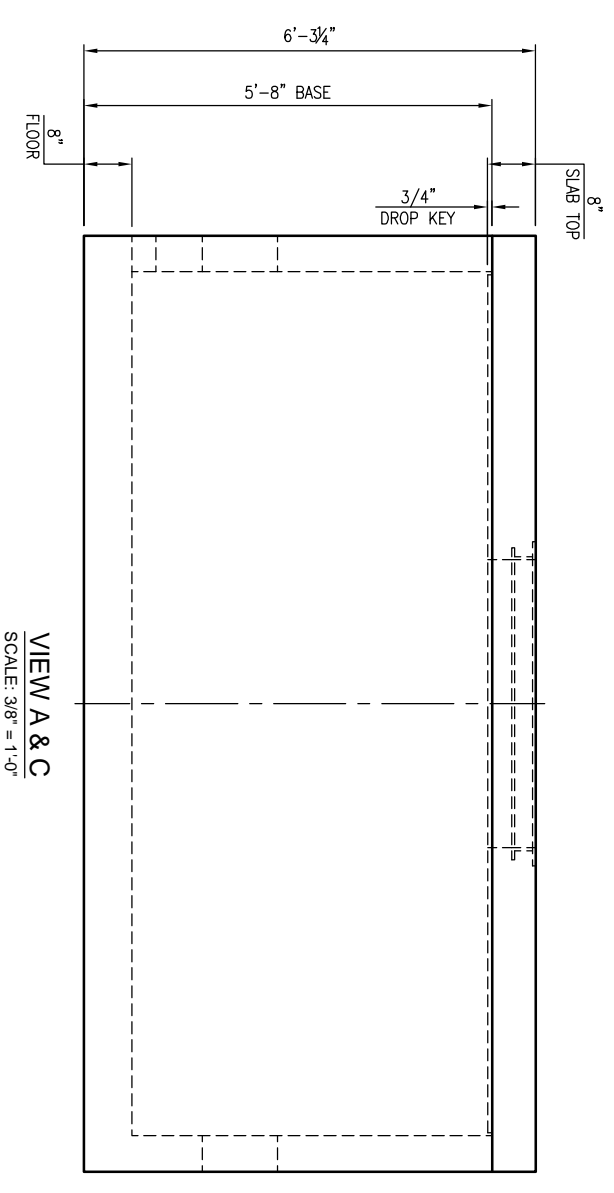
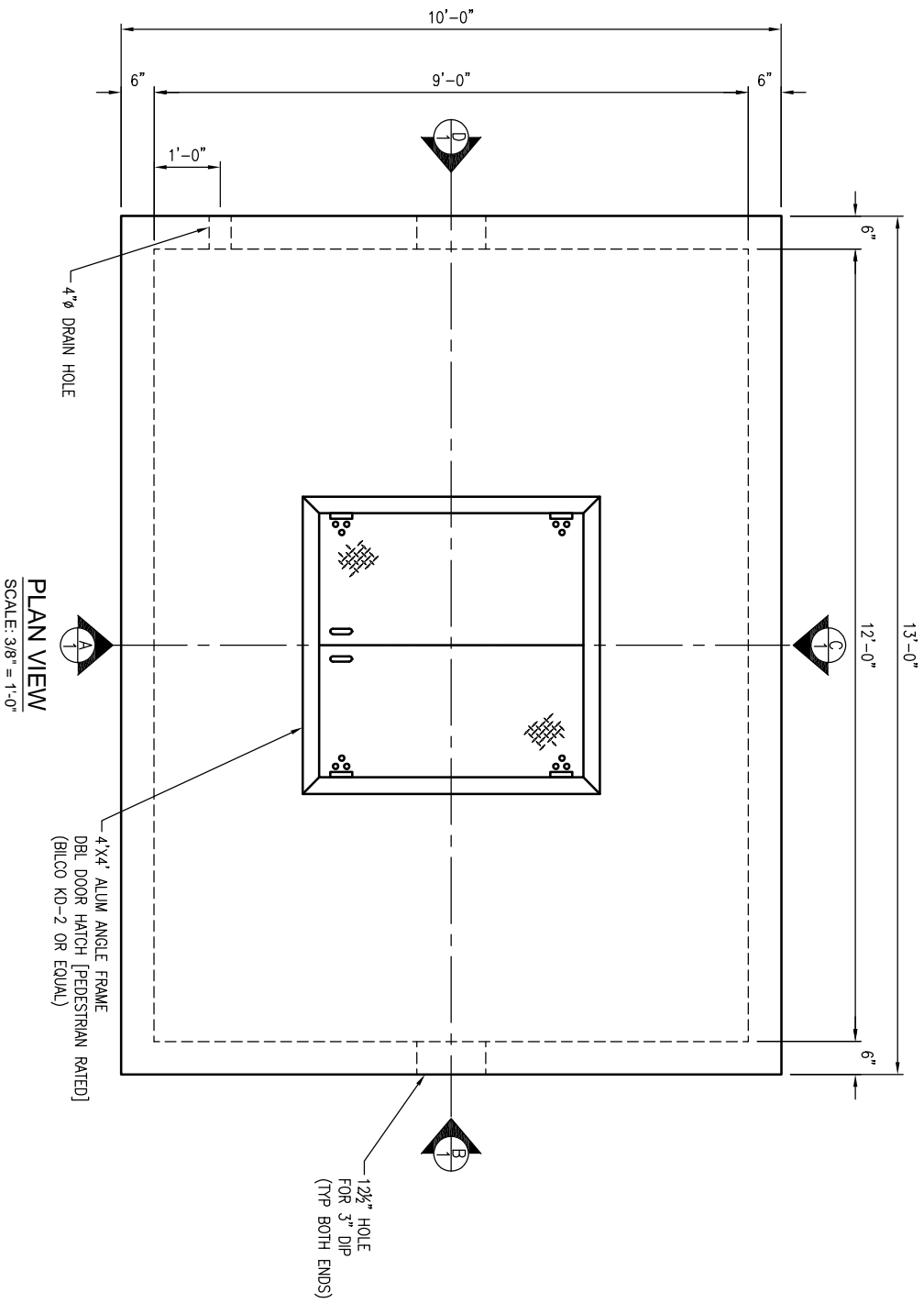


**NOTES TO CONTRACTOR:**

- PLEASE VERIFY ALL SIZES, LOCATIONS, AND ELEVATIONS OF OPENINGS.
- THE CONTRACTOR SHALL BE RESPONSIBLE FOR PROPER COORDINATION TO ENSURE THAT AN ADEQUATE BEARING SURFACE IS PROVIDED (E. LEVEL AND COMPACTED) PER PROJECT SPECIFICATIONS AND DRAWINGS.
- AFTER PIPES ARE INSTALLED IN BLOCKOUTS, ALL ANNULAR SPACES SHALL BE FILLED WITH A MIN. OF 3,000 PSI CONCRETE, TIGHT TO THE UNDERSIDE OF UPPER SECTION FOR FULL THICKNESS OF VAULT WALL.

**GENERAL DESIGN NOTES:**

- STRENGTH DESIGN METHOD IN ACCORDANCE WITH (I.A.W.) ACI 318.
- APPLICABLE DESIGN DOCUMENTS (CURRENT EDITIONS):
  - ACI 318 BUILDING CODE REQUIREMENTS FOR STRUCTURAL CONCRETE (MAIN DESIGN SPECIFICATION).
  - ASTM C890 STANDARD PRACTICE FOR MINIMUM STRUCTURAL LOADING FOR MONOLITHIC OR SECTIONAL PRECAST CONCRETE WATER AND WASTEWATER STRUCTURES (LOADING SPECIFICATION).
  - ASTM C913 STANDARD SPECIFICATION FOR PRECAST CONCRETE WATER AND WASTEWATER STRUCTURES (PRODUCT SPECIFICATION).
- PRECAST RATED FOR PEDESTRIAN LIVE LOAD (150 PSF).
- DESIGN FILL AT GRADE.
- GROUND WATER TABLE ASSUMED 5' BELOW GRADE. IF DESIGN (OR ACTUAL) WATER TABLE IS LESS THAN ASSUMED, REVIEWING ENGINEER TO NOTIFY OLDCASTLE PRECAST UPON REVIEW OF THIS SUBMITTAL.
- LATERAL DESIGN PRESSURES (AS APPLICABLE TO DESIGN, SEE CALCULATIONS):
  - EQUIV DRY SOIL FLUID PRESSURE = 47 PCF.
  - EQUIV SATURATED SOIL FLUID PRESSURE = 85 PCF.
  - LIVE LOAD SURCHARGE PRESSURE = 80 PSF.
  - HYDROSTATIC WATER PRESSURE = 62.4 PCF.
- DESIGN CONCRETE COMPRESSIVE STRENGTH AT 28 DAYS = 4,000 PSI (MIN).
- REINFORCEMENT: OLDCASTLE PE (DESIGN ENGINEER) MAY SUBSTITUTE THE REINFORCEMENT SHOWN HEREIN TO AN EQUIVALENT REINFORCEMENT ALTERNATIVE NOTED BELOW.
  - CARBON-STEEL DEFORMED BARS: ASTM A615, fy = 60KSI (MIN).
- JOINT SEALANT (AS DETAILED AND NOTED IN DRAWINGS HEREIN):
  - CS-102 CONSEAL BUTYL RUBBER SEALANT (OR EQUIV.) I.A.W. ASTM C990 FED. SPEC. S5-S-210.
- PRECAST DESIGN DOES NOT INCLUDE ANY LATERAL OR SURCHARGE LOADS FROM OTHER BUILDINGS OR FOUNDATIONS ADJACENT TO THIS STRUCTURE. THIS STRUCTURE SHALL BE KEPT A MINIMUM OF 1:1 RATIO AWAY FROM OTHER FOOTINGS OR FOUNDATIONS.



\*\*THIS MUST BE FILLED OUT BEFORE MANUFACTURING BEGINS.\*\*



**Oldcastle Precast**  
 4665 STOUGH RD. CONCORD, NC  
 OFFICE: 704-788-4861 FAX: 704-788-4880  
 NC ENGINEERING LICENSE #E-1002

SECTION	WEIGHT (lbs)	COMPLETION
8" SLAB TOP	11,200	2.76
5.67' BASE	29,400	7.25
<b>TOTAL</b>	<b>40,600</b>	

9X12' ID METER VAULT  
 SUBMITTAL LAYOUT  
 3" WATER METER VAULT  
 TOWN OF APEX, NC

APPROVED W/ NO EXCEPTIONS TAKEN:	<input type="checkbox"/>
APPROVED AS NOTED:	<input type="checkbox"/>
REVISED AND RESUBMIT:	<input type="checkbox"/>
SIGNATURE	DATE

DATE	SUES	DRAWN	ENGINEER	CHECKED	SALES ORDER
10/19/17	PPS	ELMT	LD	REVISION	SHEET
Apex W/MV 3-4-6-8 Submittal					1 OF 1

REVISION	DATE	BY	SHEET	DESCRIPTION OF REVISION	REQUESTED BY
A					
B					

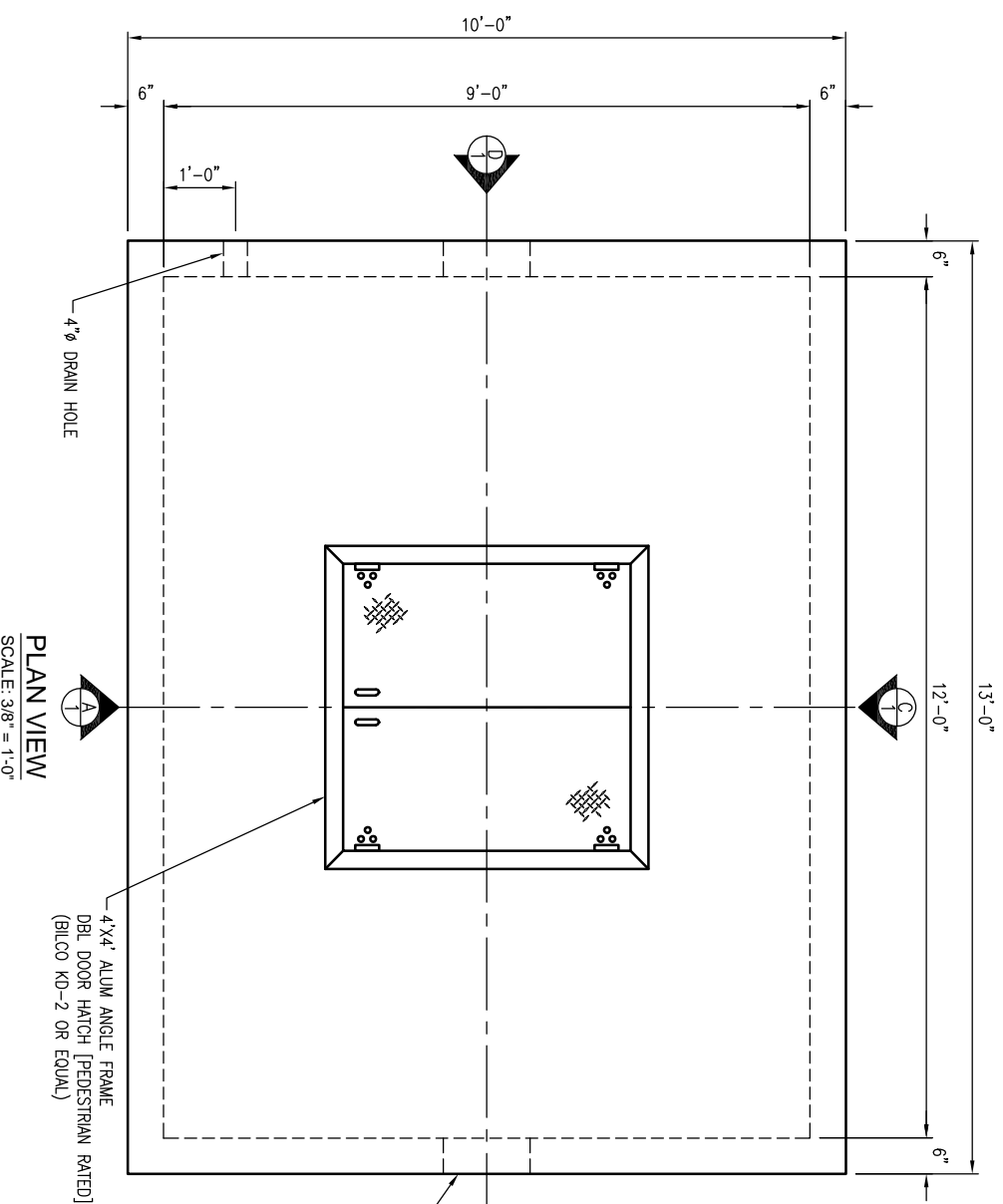
**REVISIONS**

**NOTES TO CONTRACTOR:**

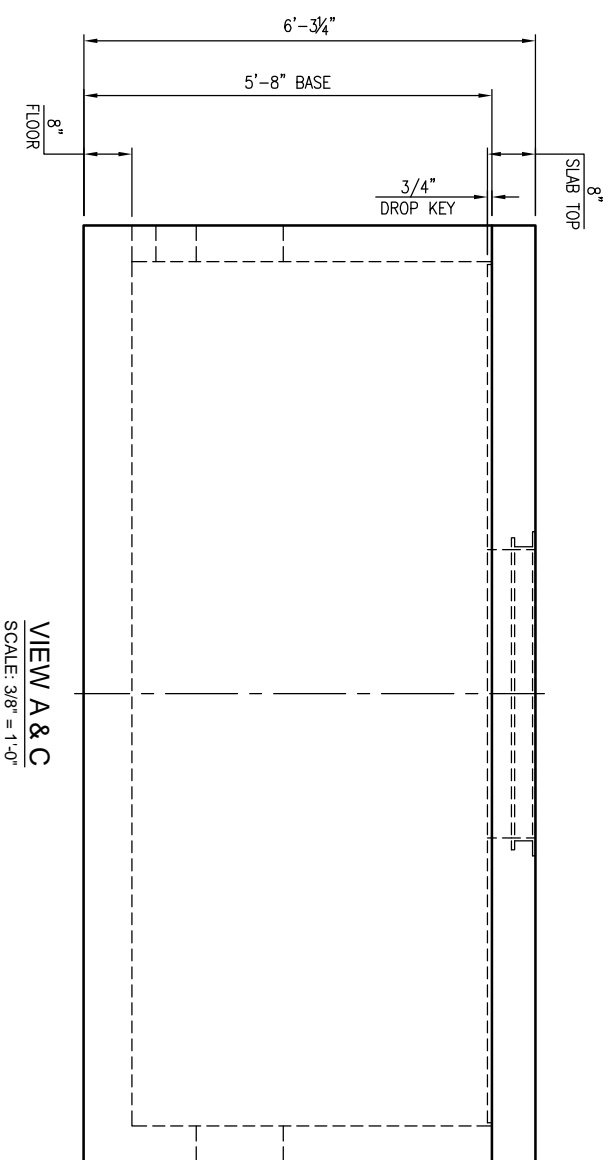
- PLEASE VERIFY ALL SIZES, LOCATIONS, AND ELEVATIONS OF OPENINGS.
- THE CONTRACTOR SHALL BE RESPONSIBLE FOR PROPER COORDINATION TO ENSURE THAT AN ADEQUATE BEARING SURFACE IS PROVIDED (I.E. LEVEL AND COMPACTED) PER PROJECT SPECIFICATIONS AND DRAWINGS.
- AFTER PIPES ARE INSTALLED IN BLOCKOUTS, ALL ANNULAR SPACES SHALL BE FILLED WITH A MIN. OF 3,000 PSI CONCRETE, TIGHT TO THE UNDERSIDE OF UPPER SECTION FOR FULL THICKNESS OF VAULT WALL.

**GENERAL DESIGN NOTES:**

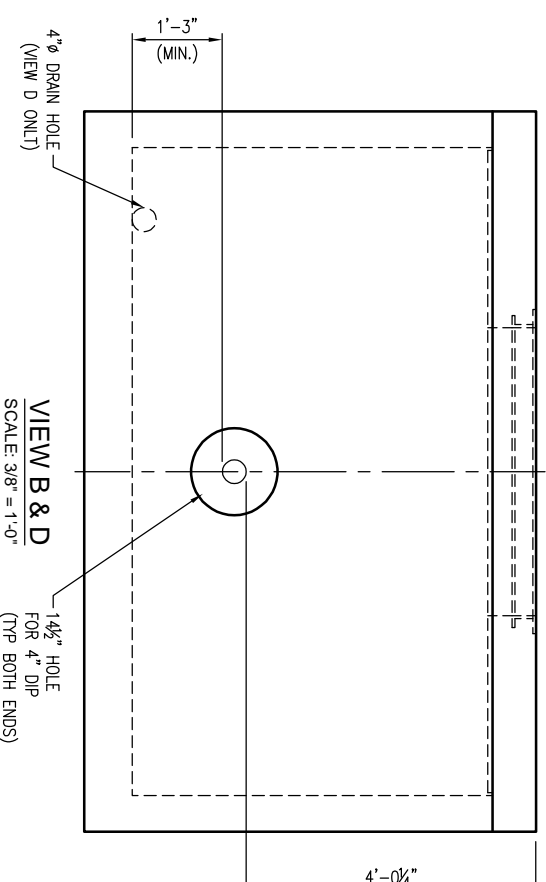
- STRENGTH DESIGN METHOD IN ACCORDANCE WITH (I.A.W.) ACI 318.
- APPLICABLE DESIGN DOCUMENTS (CURRENT EDITIONS):
  - ACI 318 BUILDING CODE REQUIREMENTS FOR STRUCTURAL CONCRETE (MAIN DESIGN SPECIFICATION).
  - ASTM C890 STANDARD PRACTICE FOR MINIMUM STRUCTURAL LOADING FOR MONOLITHIC OR SECTIONAL PRECAST CONCRETE WATER AND WASTEWATER STRUCTURES (LOADING SPECIFICATION).
  - ASTM C913 STANDARD SPECIFICATION FOR PRECAST CONCRETE WATER AND WASTEWATER STRUCTURES (PRODUCT SPECIFICATION).
- PRECAST RATED FOR PEDESTRIAN LIVE LOAD (150 PSF).
- DESIGN FILL AT GRADE.
- GROUND WATER TABLE ASSUMED 5' BELOW GRADE. IF DESIGN (OR ACTUAL) WATER TABLE IS LESS THAN ASSUMED, REVIEWING ENGINEER TO NOTIFY OLDCASTLE PRECAST UPON REVIEW OF THIS SUBMITTAL.
- LATERAL DESIGN PRESSURES (AS APPLICABLE TO DESIGN, SEE CALCULATIONS):
  - EQUIV DRY SOIL FLUID PRESSURE = 47 PCF.
  - EQUIV SATURATED SOIL FLUID PRESSURE = 85 PCF.
  - LIVE LOAD SURCHARGE PRESSURE = 80 PSF.
  - HYDROSTATIC WATER PRESSURE = 62.4 PCF.
- DESIGN CONCRETE COMPRESSIVE STRENGTH AT 28 DAYS = 4,000 PSI (MIN).
- REINFORCEMENT: OLDCASTLE PE (DESIGN ENGINEER) MAY SUBSTITUTE THE REINFORCEMENT SHOWN HEREIN TO AN EQUIVALENT REINFORCEMENT ALTERNATIVE NOTED BELOW.
  - CARBON-STEEL DEFORMED BARS: ASTM A615,  $f_y = 60$ KSI (MIN).
- JOINT SEALANT (AS DETAILED AND NOTED IN DRAWINGS HEREIN):
  - CS-102 CONSEAL BUTYL RUBBER SEALANT (OR EQUIV.) I.A.W. ASTM C990 FED. SPEC. S5-S-210.
- PRECAST DESIGN DOES NOT INCLUDE ANY LATERAL OR SURCHARGE LOADS FROM OTHER BUILDINGS OR FOUNDATIONS ADJACENT TO THIS STRUCTURE. THIS STRUCTURE SHALL BE KEPT A MINIMUM OF 1:1 RATIO AWAY FROM OTHER FOOTINGS OR FOUNDATIONS.



**PLAN VIEW**  
SCALE: 3/8" = 1'-0"



**VIEW A & C**  
SCALE: 3/8" = 1'-0"



**VIEW B & D**  
SCALE: 3/8" = 1'-0"

\*\*THIS MUST BE FILLED OUT BEFORE MANUFACTURING BEGINS.\*\*

APPROVED W/ NO EXCEPTIONS TAKEN:

APPROVED AS NOTED:

REVISED AND RESUBMIT:

SIGNATURE: \_\_\_\_\_ DATE: \_\_\_\_\_

WEIGHTS			
SECTION	WEIGHT (LBS)	COMPLETION	
8" SLAB TOP	11,200	2.76	
5.67' BASE	29,300	7.24	
<b>TOTAL</b>	<b>40,500</b>		



THIS DOCUMENT IS THE PROPERTY OF OLDCASTLE PRECAST, INC. IT IS COMPILED, SUBMITTED FOR REFERENCE PURPOSES ONLY, AND SHALL NOT BE USED IN ANY WAY WITHOUT THE WRITTEN PERMISSION OF OLDCASTLE PRECAST, INC. COPYRIGHT © 2017 OLDCASTLE PRECAST, INC. ALL RIGHTS RESERVED.

**9X12' ID METER VAULT**  
SUBMITTAL LAYOUT  
4" WATER METER VAULT  
TOWN OF APEX, NC

DATE	SUITS	DRAWN	ENGINEER	CHECKED	SALES ORDER
10/19/17	PPS	EMT	LD	REVISION	SHEET
Apex W/MV 3-4-6-8 Submittal					1 OF 1

REVISIONS			
REVISION	DATE	BY	SHEET
A			
B			

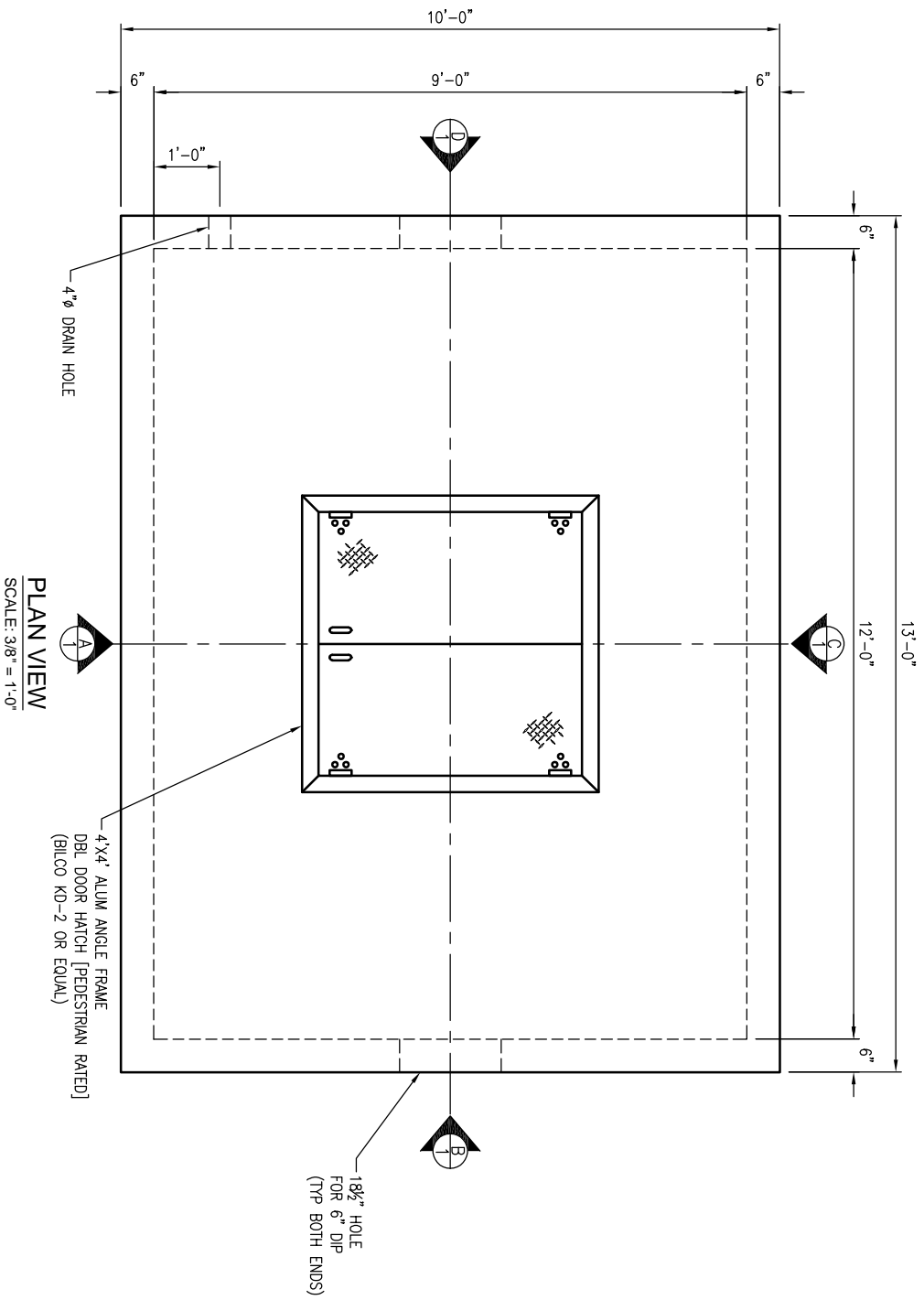
REVISION	DATE	BY	SHEET	DESCRIPTION OF REVISION	REQUESTED BY
A					
B					

**NOTES TO CONTRACTOR:**

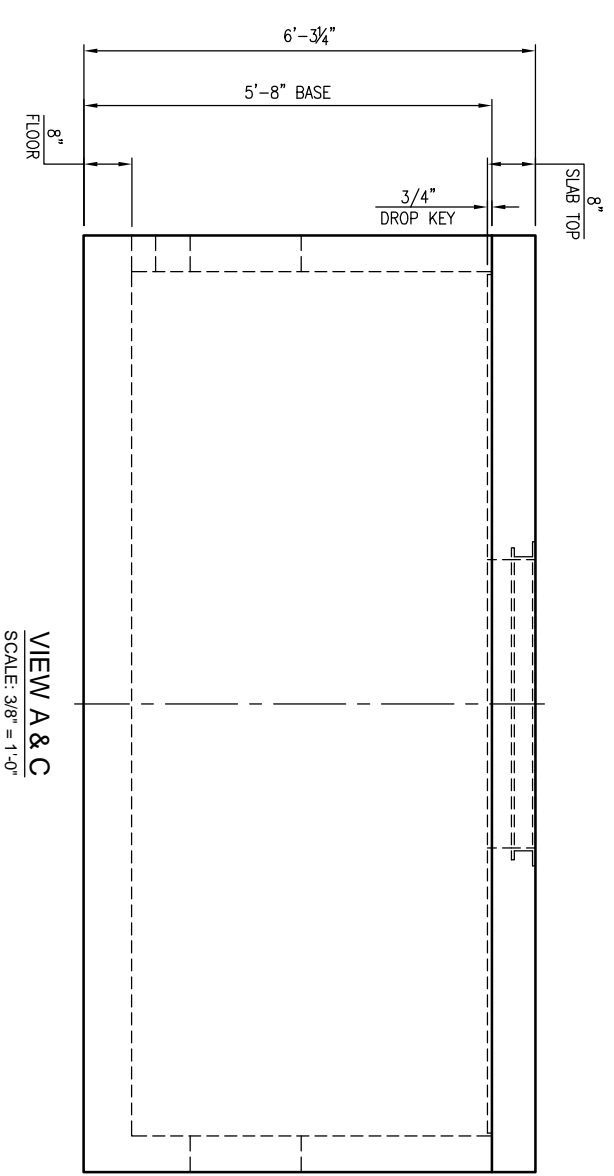
- PLEASE VERIFY ALL SIZES, LOCATIONS, AND ELEVATIONS OF OPENINGS.
- THE CONTRACTOR SHALL BE RESPONSIBLE FOR PROPER COORDINATION TO ENSURE THAT AN ADEQUATE BEARING SURFACE IS PROVIDED (E. LEVEL AND COMPACTED) PER PROJECT SPECIFICATIONS AND DRAWINGS.
- AFTER PIPES ARE INSTALLED IN BLOCKOUTS, ALL ANNULAR SPACES SHALL BE FILLED WITH A MIN. OF 3,000 PSI CONCRETE, TIGHT TO THE UNDERSIDE OF UPPER SECTION FOR FULL THICKNESS OF VAULT WALL.

**GENERAL DESIGN NOTES:**

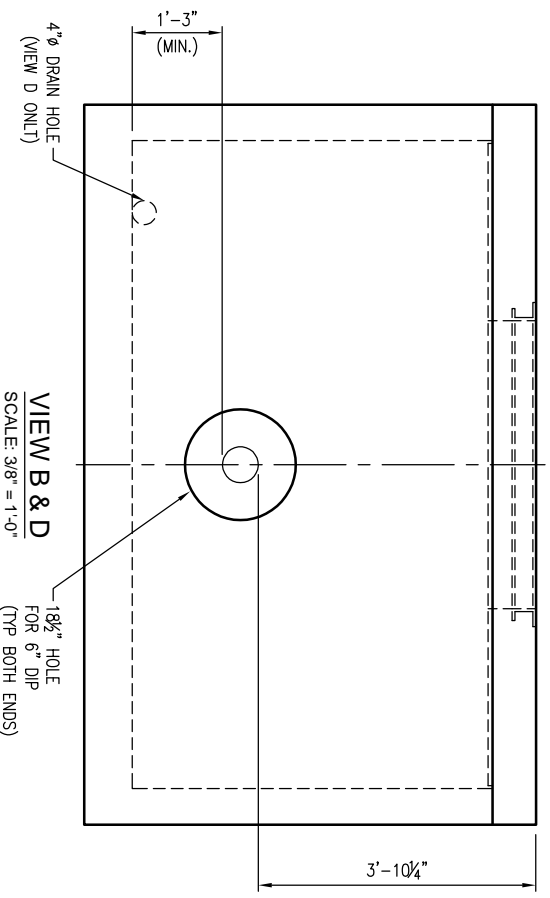
- STRENGTH DESIGN METHOD IN ACCORDANCE WITH (I.A.W.) ACI 318.
- APPLICABLE DESIGN DOCUMENTS (CURRENT EDITIONS):
  - ACI 318 BUILDING CODE REQUIREMENTS FOR STRUCTURAL CONCRETE (MAIN DESIGN SPECIFICATION).
  - ASTM C890 STANDARD PRACTICE FOR MINIMUM STRUCTURAL LOADING FOR MONOLITHIC OR SECTIONAL PRECAST CONCRETE WATER AND WASTEWATER STRUCTURES (LOADING SPECIFICATION).
  - ASTM C913 STANDARD SPECIFICATION FOR PRECAST CONCRETE WATER AND WASTEWATER STRUCTURES (PRODUCT SPECIFICATION).
- PRECAST RATED FOR PEDESTRIAN LIVE LOAD (150 PSF).
- DESIGN FILL AT GRADE.
- GROUND WATER TABLE ASSUMED 5' BELOW GRADE. IF DESIGN (OR ACTUAL) WATER TABLE IS LESS THAN ASSUMED, REVIEWING ENGINEER TO NOTIFY OLDCASTLE PRECAST UPON REVIEW OF THIS SUBMITTAL.
- LATERAL DESIGN PRESSURES (AS APPLICABLE TO DESIGN, SEE CALCULATIONS):
  - EQUIV DRY SOIL FLUID PRESSURE = 47 PCF.
  - EQUIV SATURATED SOIL FLUID PRESSURE = 85 PCF.
  - LIVE LOAD SURCHARGE PRESSURE = 80 PSF.
  - HYDROSTATIC WATER PRESSURE = 62.4 PCF.
- DESIGN CONCRETE COMPRESSIVE STRENGTH AT 28 DAYS = 4,000 PSI (MIN).
- REINFORCEMENT: OLDCASTLE PE (DESIGN ENGINEER) MAY SUBSTITUTE THE REINFORCEMENT SHOWN HEREIN TO AN EQUIVALENT REINFORCEMENT ALTERNATIVE NOTED BELOW.
  - CARBON-STEEL DEFORMED BARS: ASTM A615, fy = 60KSI (MIN).
- JOINT SEALANT (AS DETAILED AND NOTED IN DRAWINGS HEREIN):
  - CS-102 CONSEAL BUTYL RUBBER SEALANT (OR EQUIV.) I.A.W. ASTM C990 FED. SPEC. SS-S-210.
- PRECAST DESIGN DOES NOT INCLUDE ANY LATERAL OR SURCHARGE LOADS FROM OTHER BUILDINGS OR FOUNDATIONS ADJACENT TO THIS STRUCTURE. THIS STRUCTURE SHALL BE KEPT A MINIMUM OF 1:1 RATIO AWAY FROM OTHER FOOTINGS OR FOUNDATIONS.



**PLAN VIEW**  
SCALE: 3/8" = 1'-0"



**VIEW A & C**  
SCALE: 3/8" = 1'-0"



**VIEW B & D**  
SCALE: 3/8" = 1'-0"

WEIGHTS		
SECTION	WEIGHT (lbs)	Completion
8" SLAB TOP	11,200	2.76
5.67' BASE	29,200	7.21
<b>TOTAL</b>	<b>40,400</b>	



\*\*\*THIS MUST BE FILLED OUT BEFORE MANUFACTURING BEGINS.\*\*  
 APPROVED W/ NO EXCEPTIONS TAKEN:   
 APPROVED AS NOTED:   
 REVISED AND RESUBMIT:

APPROVED: \_\_\_\_\_  
 DATE: \_\_\_\_\_

REVISIONS			
REVISION	DATE	BY	SHEET
A			
B			

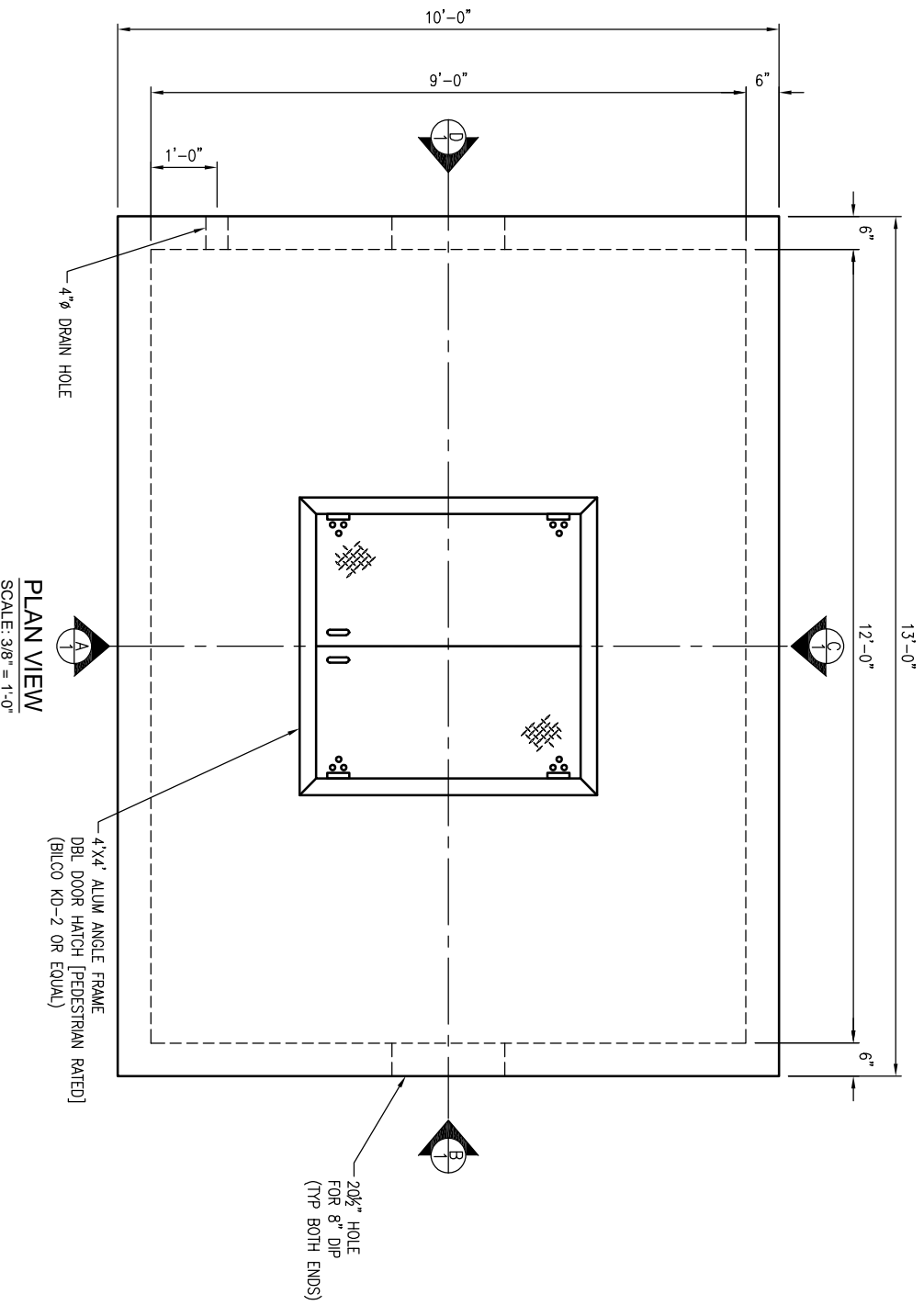
DATE	DRAWN	ENGINEER	CHECKED	SALES ORDER
10/19/17	PPS	EJMT	LD	
Apex W/M/V 3-4-6-8 Submittal				1 OF 1

**NOTES TO CONTRACTOR:**

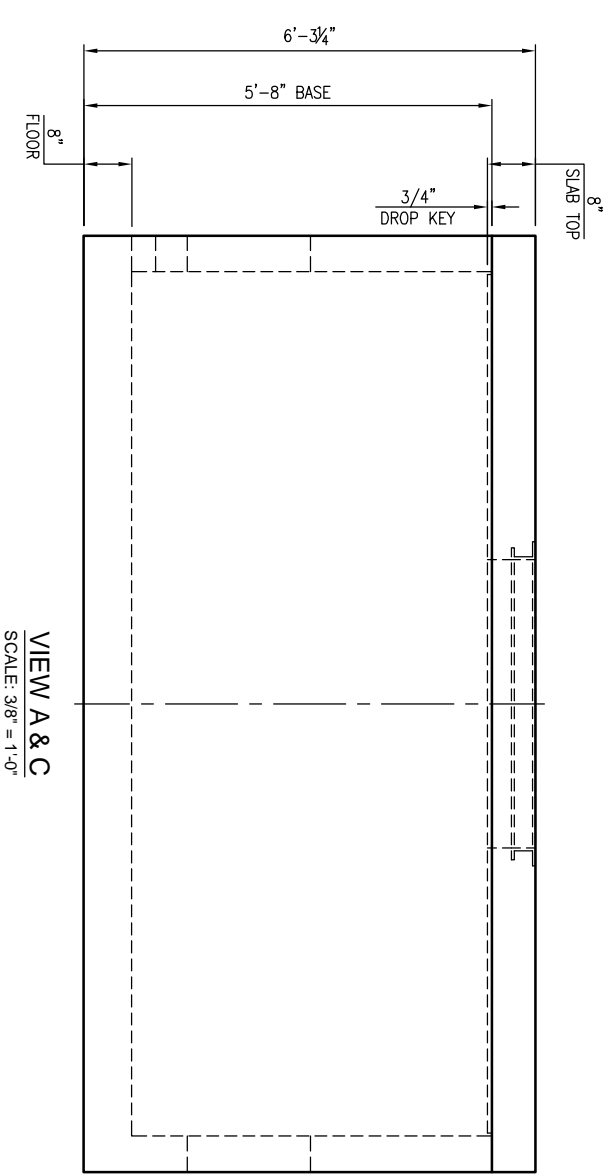
- PLEASE VERIFY ALL SIZES, LOCATIONS, AND ELEVATIONS OF OPENINGS.
- THE CONTRACTOR SHALL BE RESPONSIBLE FOR PROPER COORDINATION TO ENSURE THAT AN ADEQUATE BEARING SURFACE IS PROVIDED (E. LEVEL AND COMPACTED) PER PROJECT SPECIFICATIONS AND DRAWINGS.
- AFTER PIPES ARE INSTALLED IN BLOCKOUTS, ALL ANNULAR SPACES SHALL BE FILLED WITH A MIN. OF 3,000 PSI CONCRETE, TIGHT TO THE UNDERSIDE OF UPPER SECTION FOR FULL THICKNESS OF VAULT WALL.

**GENERAL DESIGN NOTES:**

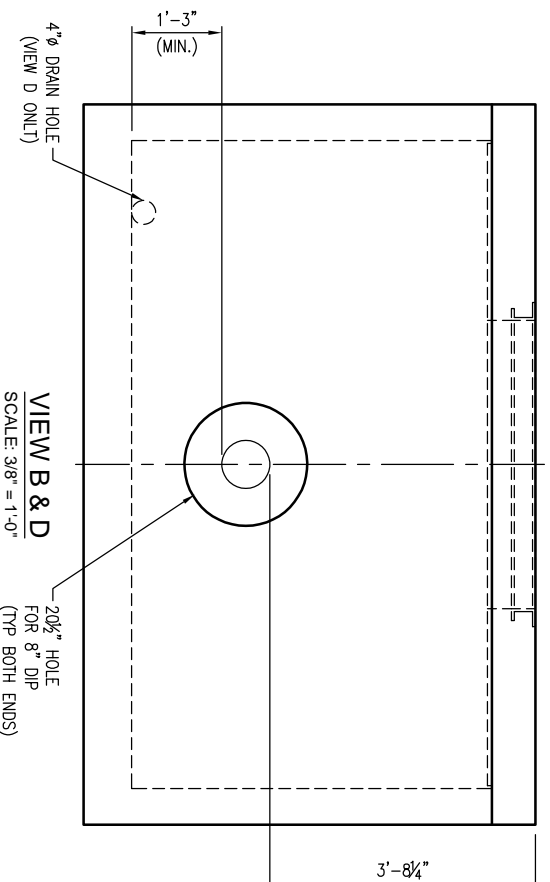
- STRENGTH DESIGN METHOD IN ACCORDANCE WITH (I.A.W.) ACI 318.
- APPLICABLE DESIGN DOCUMENTS (CURRENT EDITIONS):
  - ACI 318 BUILDING CODE REQUIREMENTS FOR STRUCTURAL CONCRETE (MAIN DESIGN SPECIFICATION).
  - ASTM C890 STANDARD PRACTICE FOR MINIMUM STRUCTURAL LOADING FOR MONOLITHIC OR SECTIONAL PRECAST CONCRETE WATER AND WASTEWATER STRUCTURES (LOADING SPECIFICATION).
  - ASTM C913 STANDARD SPECIFICATION FOR PRECAST CONCRETE WATER AND WASTEWATER STRUCTURES (PRODUCT SPECIFICATION).
- PRECAST RATED FOR PEDESTRIAN LIVE LOAD (150 PSF).
- DESIGN FILL AT GRADE.
- GROUND WATER TABLE ASSUMED 5' BELOW GRADE. IF DESIGN (OR ACTUAL) WATER TABLE IS LESS THAN ASSUMED, REVIEWING ENGINEER TO NOTIFY OLDCASTLE PRECAST UPON REVIEW OF THIS SUBMITTAL.
- LATERAL DESIGN PRESSURES (AS APPLICABLE TO DESIGN, SEE CALCULATIONS):
  - EQUIV DRY SOIL FLUID PRESSURE = 47 PCF.
  - EQUIV SATURATED SOIL FLUID PRESSURE = 85 PCF.
  - LIVE LOAD SURCHARGE PRESSURE = 80 PSF.
  - HYDROSTATIC WATER PRESSURE = 62.4 PCF.
- DESIGN CONCRETE COMPRESSIVE STRENGTH AT 28 DAYS = 4,000 PSI (MIN).
- REINFORCEMENT: OLDCASTLE PE (DESIGN ENGINEER) MAY SUBSTITUTE THE REINFORCEMENT SHOWN HEREIN TO AN EQUIVALENT REINFORCEMENT ALTERNATIVE NOTED BELOW.
  - CARBON-STEEL DEFORMED BARS: ASTM A615, fy = 60KSI (MIN).
- JOINT SEALANT (AS DETAILED AND NOTED IN DRAWINGS HEREIN):
  - CS-102 CONSEAL BUTYL RUBBER SEALANT (OR EQUIV.) I.A.W. ASTM C990 FED. SPEC. SS-S-210.
- PRECAST DESIGN DOES NOT INCLUDE ANY LATERAL OR SURCHARGE LOADS FROM OTHER BUILDINGS OR FOUNDATIONS ADJACENT TO THIS STRUCTURE. THIS STRUCTURE SHALL BE KEPT A MINIMUM OF 1:1 RATIO AWAY FROM OTHER FOOTINGS OR FOUNDATIONS.



**PLAN VIEW**  
SCALE: 3/8" = 1'-0"



**VIEW A & C**  
SCALE: 3/8" = 1'-0"



**VIEW B & D**  
SCALE: 3/8" = 1'-0"



**Oldcastle Precast®**  
 4665 STOUGH RD. CONCORD, NC  
 OFFICE: 704-788-4861 FAX: 704-788-4880  
 NC ENGINEERING  
 LICENSE #E-1002

SECTION	WEIGHT (lbs)	COMPLETION
8" SLAB TOP	11,200	2.76
5.67' BASE	29,150	7.19
<b>TOTAL</b>	<b>40,350</b>	

\*\*THIS MUST BE FILLED OUT BEFORE MANUFACTURING BEGINS.\*\*

APPROVED W/ NO EXCEPTIONS TAKEN:

APPROVED AS NOTED:

REVISED AND RESUBMIT:

SIGNATURE: \_\_\_\_\_ DATE: \_\_\_\_\_

DATE	SUBS	DRAWN	ENGINEER	CHECKED	SALES ORDER
10/19/17	PPS	ELMT	LD	REVISION	SHEET
Apex W/M/V 3-4-6-8 Submittal					1 OF 1

REVISION	DATE	BY	SHEET	DESCRIPTION OF REVISION	REQUESTED BY
A					
B					

**REVISIONS**