

575-TRANS-PCORP

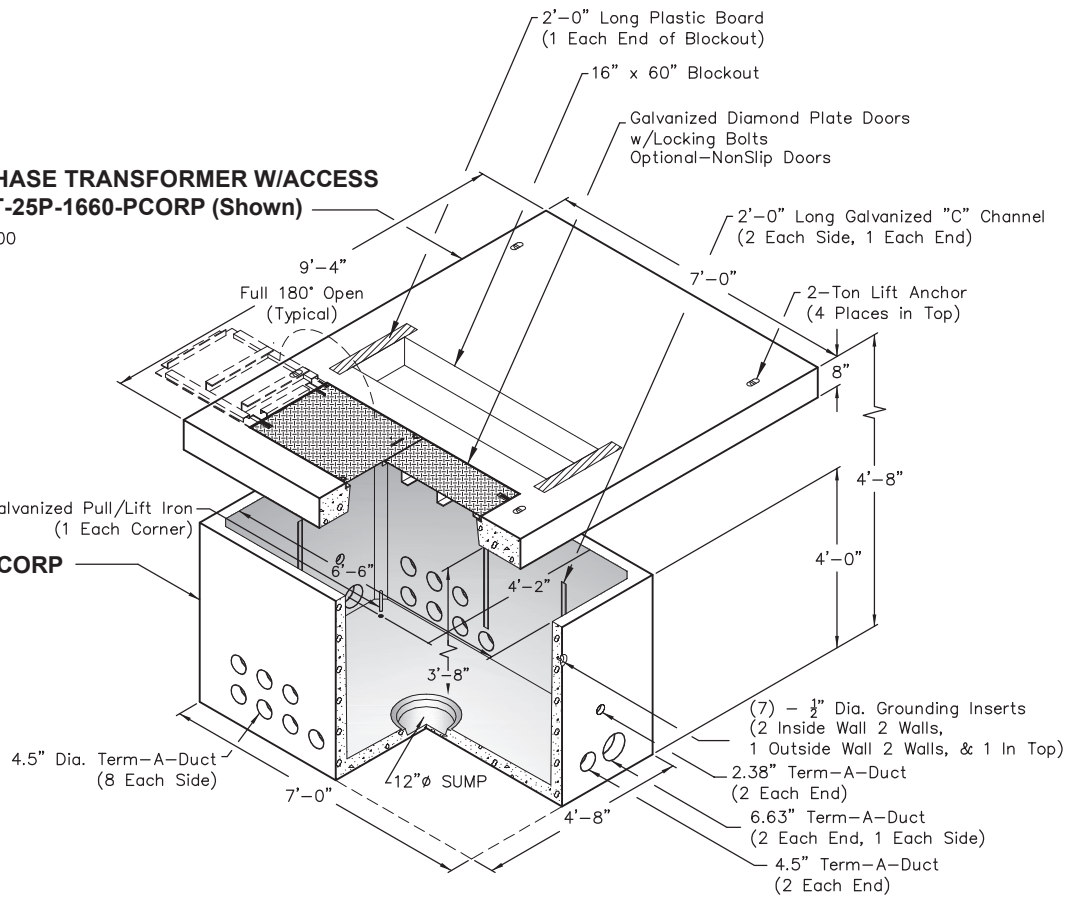
5 x 7, 4-25 kV, 3-Phase 75-750 kVA Transformer Padvault With Access, Stock Item 7992600
 5 x 7, 35 kV, 3-Phase 75-750 kVA Transformer Padvault With Access, Stock Item 7992602

TOP
4-25kV, 3-PHASE TRANSFORMER W/ACCESS
No. 84/112-T-25P-1660-PCORP (Shown)

PCORP #7992600
 5,225 lbs.

BASE
No. 575-B-PCORP

4,800 lbs.

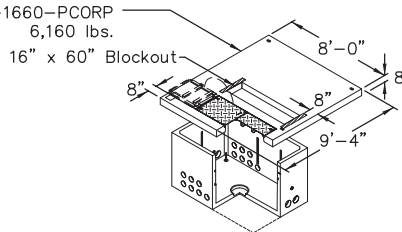


OPTIONAL TOP

35 kV, 3-PHASE TRANSFORMER W/ACCESS

PCORP #7992602

No. 96/112-T-25P-1660-PCORP
 6,160 lbs.



CABINET
 HOLD-DOWN CLEAT

(2) - Required

1 1/4" x 2 3/8" Stainless Steel Hold-Down Cleat
 1/2" x 2" Galvanized Lag Screw
 1/2" Stainless Steel Belleville Washer

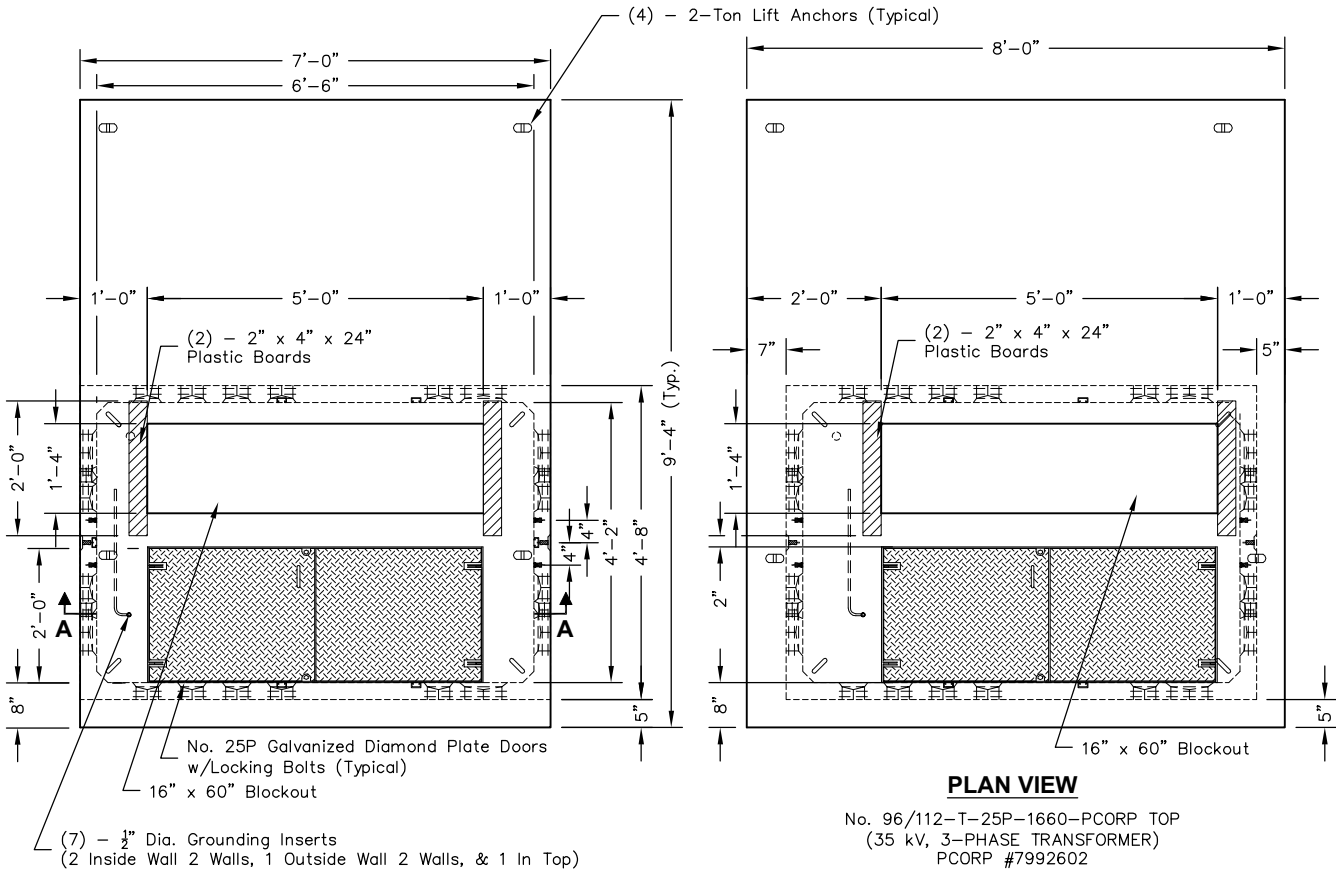
Scale: 1/4" = 1'-0"

Non Skid Covers Available

FOR DETAILS, SEE REVERSE>>

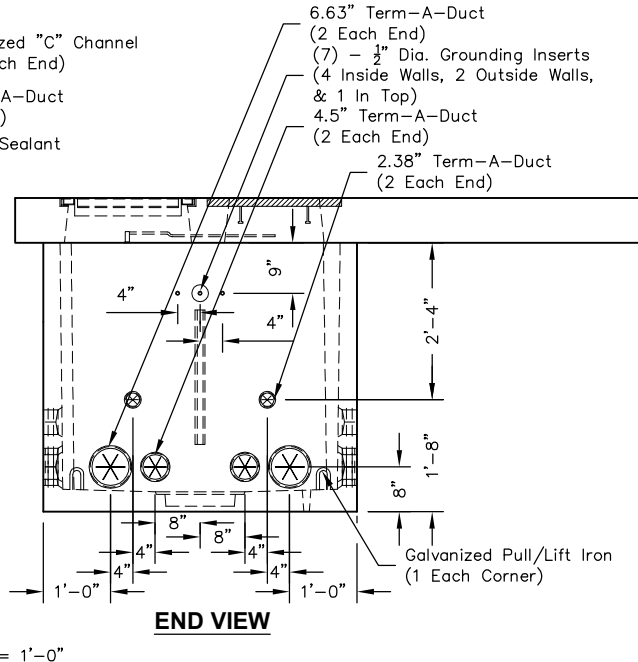
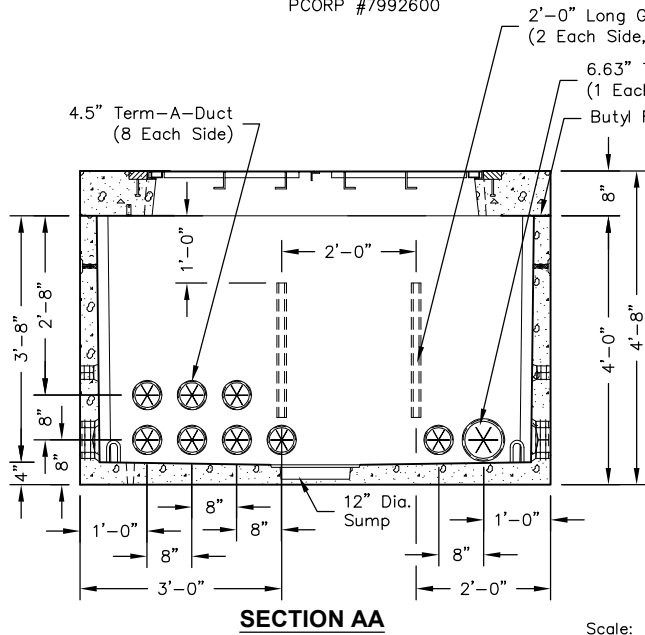
Items Shown Are Subject To Change Without Notice
 Issue Date: April 2016

575-TRANS-PCORP



PLAN VIEW

No. 84/112-T-25P-1660-PCORP
(4-25 kV, 3-PHASE TRANSFORMER TOP)
PCORP #7992600



Scale: 3/8" = 1'-0"