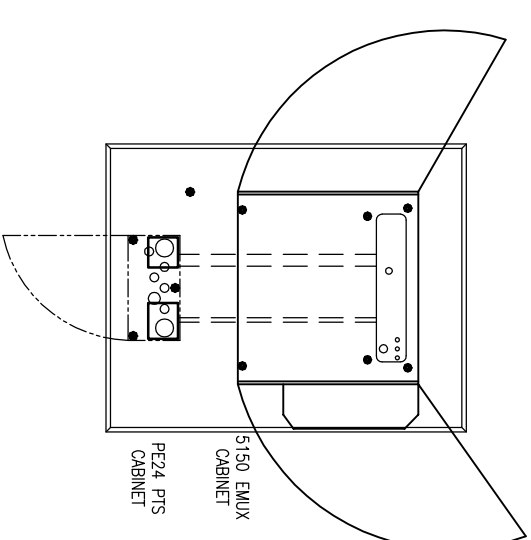
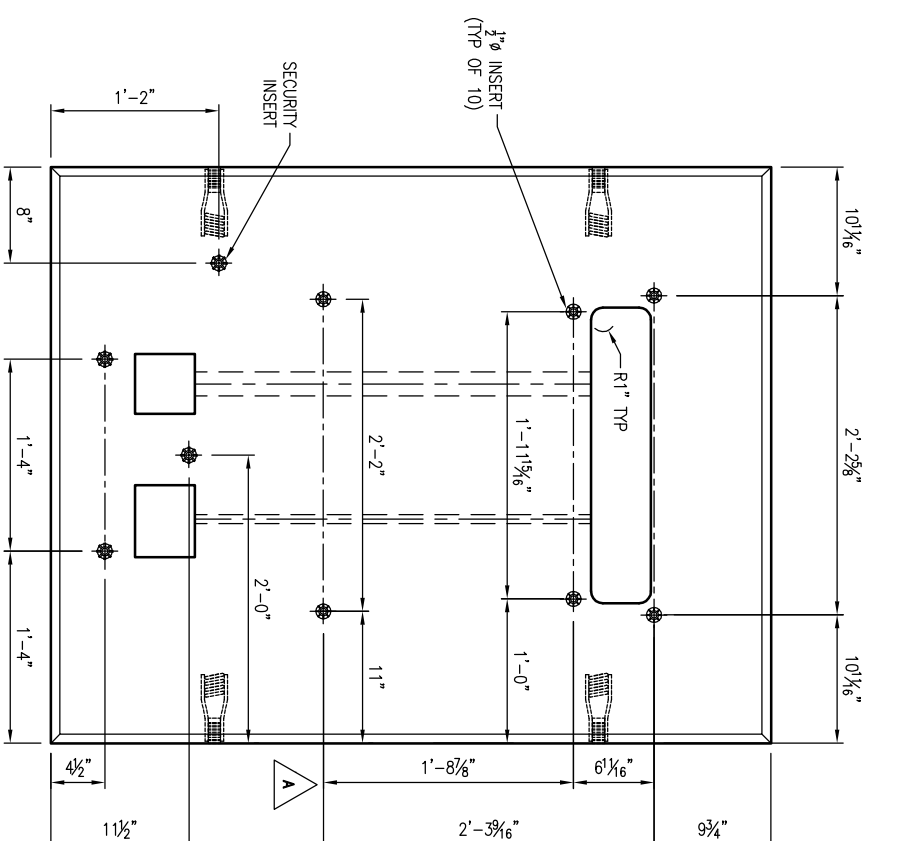


GENERAL NOTES:

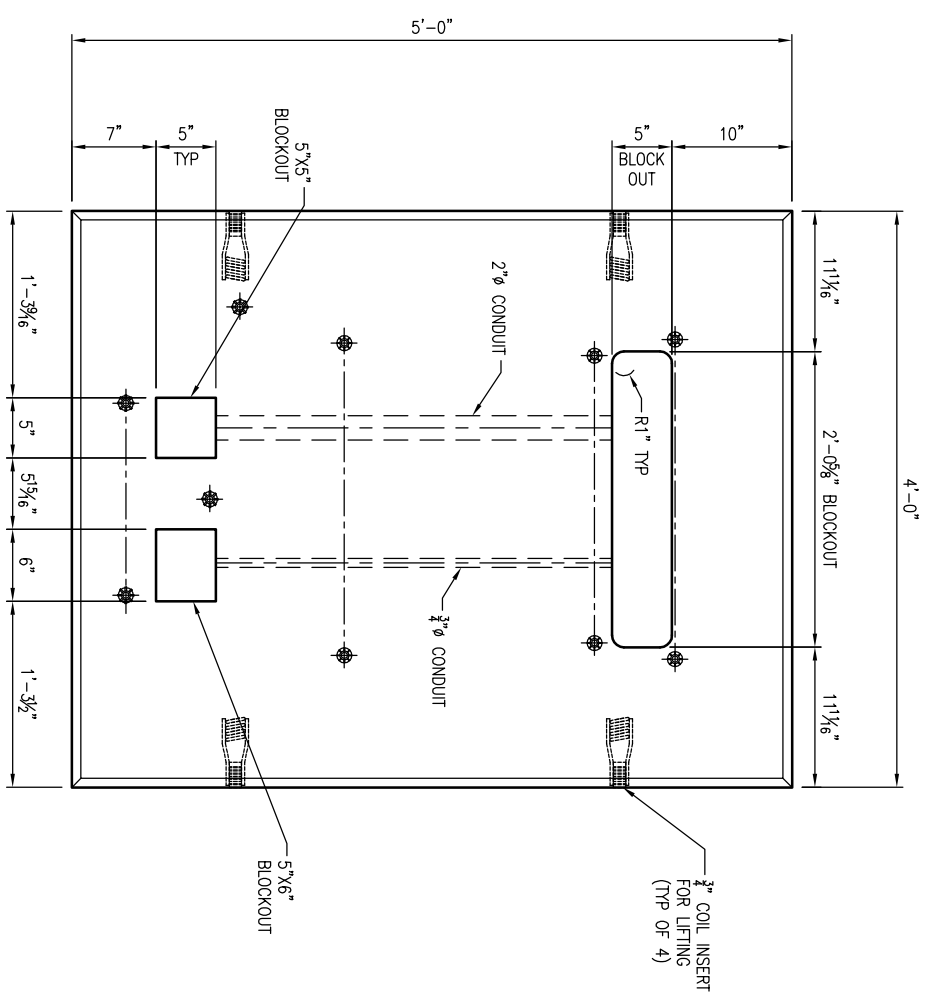
1. CONCRETE: 28 DAY COMPRESSIVE STRENGTH $f'_c = 4,000$ PSI (MIN).
2. REINFORCING: ASTM A-615, GRADE 60.
3. SLAB DESIGNED FOR 5150 EMUX CABINET (1,300 LBS) AND PTS (60 LBS) PE24 LOADS ONLY.
4. SLAB DESIGNED FOR 150 MPH WIND LOAD, IN ACCORDANCE WITH ASCE 7-10, EXPOSURE CATEGORY C, RISK CATEGORY 2.
5. SLAB SHALL BE SUPPORTED IN ACCORDANCE WITH AT&T PROJECT SPECIFICATIONS (I.E. LEVEL AND COMPACTED BEARING SURFACE).



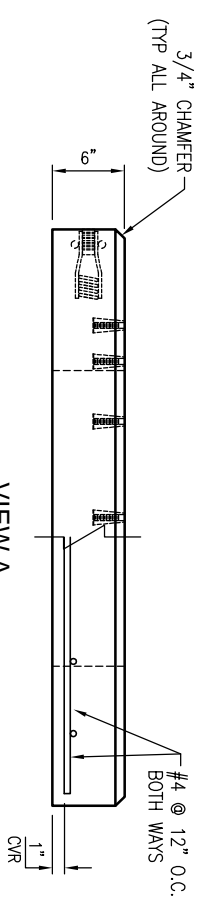
CABINET LAYOUT
SCALE: 3/8" = 1'-0"



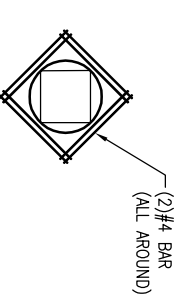
PLAN VIEW
[SHOWING INSERT LOCATIONS]
SCALE: 3/4" = 1'-0"



PLAN VIEW
[SHOWING BLOCKOUT LOCATIONS]
SCALE: 3/4" = 1'-0"



- VIEW A**
SCALE: 3/4" = 1'-0"
1. USE EXACT BAR SIZE AND SPACING AS NOTED ABOVE.
 2. ALL STEEL CUT OUT FOR OPENINGS WILL BE REPLACED, HALF REINFORCEMENT ON EACH SIDE OF OPENING. INCLUDE (2) ADDITIONAL #4 DIAGONAL BARS AROUND OPENING (SEE TYPICAL REINFORCEMENT FOR ALL OPENINGS)



TYPICAL REINFORCEMENT FOR OPENINGS
SCALE: N.T.S.

REV	DATE	BY	SHEET
A	02/09/14	LD	1
B			

REVISIONS	
DESCRIPTION OF REVISION	REQUESTED BY
ROUNDED TO NEAREST EIGHT OF INCH FOR CABINET LAYOUT	EMERSON

THIS MUST BE FILLED OUT BEFORE MANUFACTURING BEGINS

APPROVED W/ NO EXCEPTIONS TAKEN:	<input type="checkbox"/>
APPROVED AS NOTED:	<input type="checkbox"/>
REVISED AND RESUBMIT:	<input type="checkbox"/>

SIGNATURE _____ DATE _____

SECTION	WEIGHT (lbs)	COMMENTS
6" SLAB	1,500	0.37

Oldcastle Precast
6885 STOUGH TOL CONCRETE, INC.
OFFICE 104-108-4001, FAX 104-108-4080
NCS ENGINEERING
DESIGNER: R-1002

Customer: AT&T (PIN# ATT:100087883)
DATE: 7/31/14
SALES: LD
DRAWING NUMBER: 5150-EMUX-PE24PTS

THIS DOCUMENT IS THE PROPERTY OF OLDCASTLE PRECAST, INC. IT IS CONDITIONAL, SUBMITTED FOR REFERENCE PURPOSES ONLY, AND SHALL NOT BE USED IN ANY WAY WITHOUT THE WRITTEN PERMISSION OF OLDCASTLE PRECAST, INC. COPYRIGHT © 2014 OLDCASTLE PRECAST, INC. ALL RIGHTS RESERVED.

4' X 5' X 6" OD 5150 EMUX PAD
SUBMITTAL LAYOUT

W/ PE24 PTS CABINET

REG/DATE: 02/09/14
SHEET: 1 OF 1