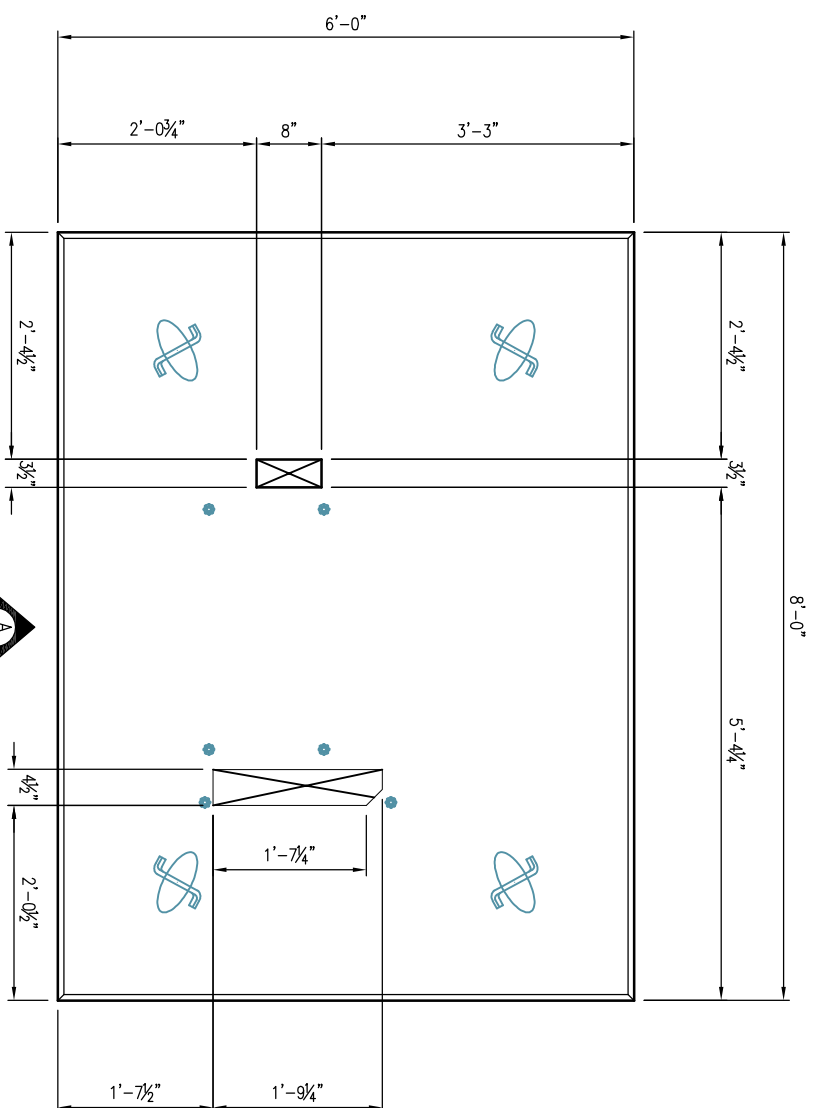
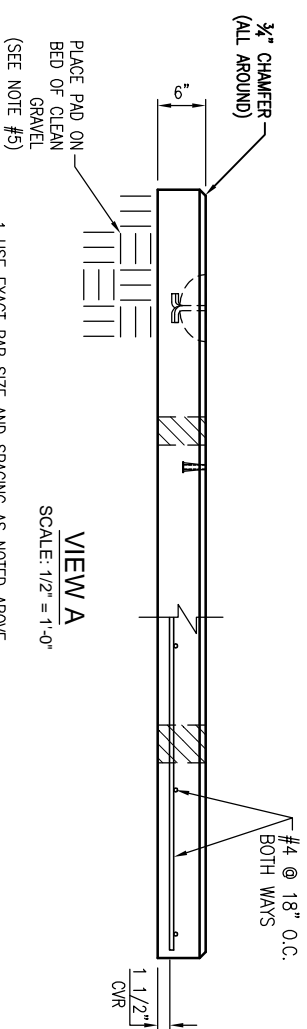


GENERAL NOTES:

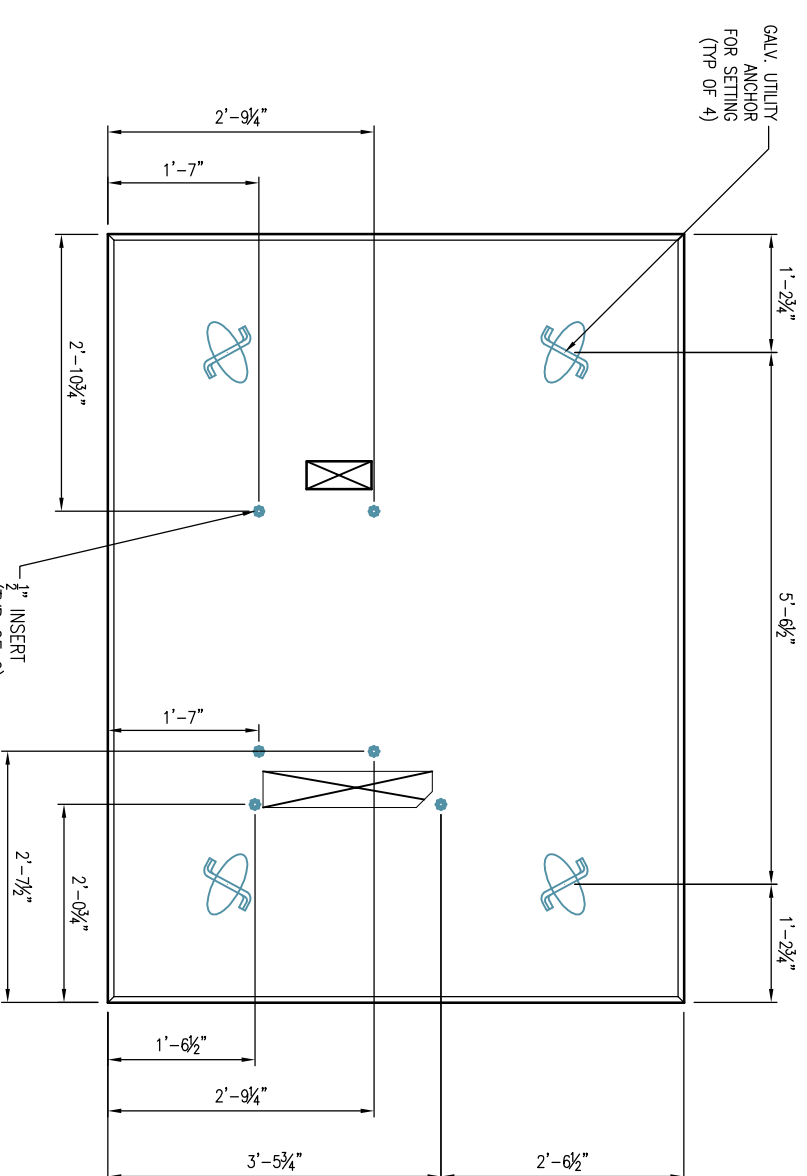
1. CONCRETE: 28 DAY COMPRESSIVE STRENGTH $f'_c = 4,000$ PSI (MIN).
2. REINFORCING: ASTM A-615, GRADE 60.
3. SLAB DESIGNED FOR 52BU CABINET LOAD ONLY.
4. SLAB DESIGNED FOR 150 MPH WIND LOAD. IN ACCORDANCE WITH ASCE 7-10, EXPOSURE CATEGORY C, RISK CATEGORY 2.
5. SLAB SHALL BE SUPPORTED IN ACCORDANCE WITH AT&T PROJECT SPECIFICATIONS (I.E. LEVEL AND COMPACTED BEARING SURFACE).



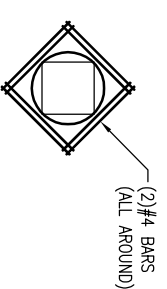
PLAN VIEW
[SHOWING BLOCKOUTS ONLY]
SCALE: 1/2" = 1'-0"



1. USE EXACT BAR SIZE AND SPACING AS NOTED ABOVE.
2. ALL STEEL CUT OUT FOR OPENINGS WILL BE REPLACED. HALF REINFORCEMENT ON EACH SIDE OF OPENING. INCLUDE (2) ADDITIONAL #4 DIAGONAL BARS AROUND OPENING (SEE TYPICAL REINFORCEMENT FOR ALL OPENINGS)



PLAN VIEW
[SHOWING INSERTS ONLY]
SCALE: 1/2" = 1'-0"



TYPICAL REINFORCEMENT FOR OPENINGS
SCALE: N.T.S.

SECTION	WEIGHT (lb)	Comments
6" PAD	3,600	0.89

Oldcastle Precast
ATLANTA
4475 Gow Circle - Stone Mountain, GA 30083-1016
Phone: 770-483-5450 Fax: 770-483-5455

THIS DOCUMENT IS THE PROPERTY OF OLDCASTLE PRECAST, INC. IT IS SUBMITTED FOR REFERENCED PURPOSES ONLY AND SHALL NOT BE USED IN ANY WAY WITHOUT THE WRITTEN PERMISSION OF OLDCASTLE PRECAST, INC. ALL RIGHTS RESERVED. COPYRIGHT © 2009 OLDCASTLE PRECAST, INC.

52BU STANDARD PAD
PRODUCTION DRAWING
ITEM#: 1500850
8'-0"x8'-0" ATT PAD

CUSTOMER: **AT & T (PIN#ATT.100052139)**

REVISION	DATE	BY	SHEET	DESCRIPTION OF REVISION	REQUESTED BY
A			1		CONTRACTOR
B					