

776-TRANS-PCORP

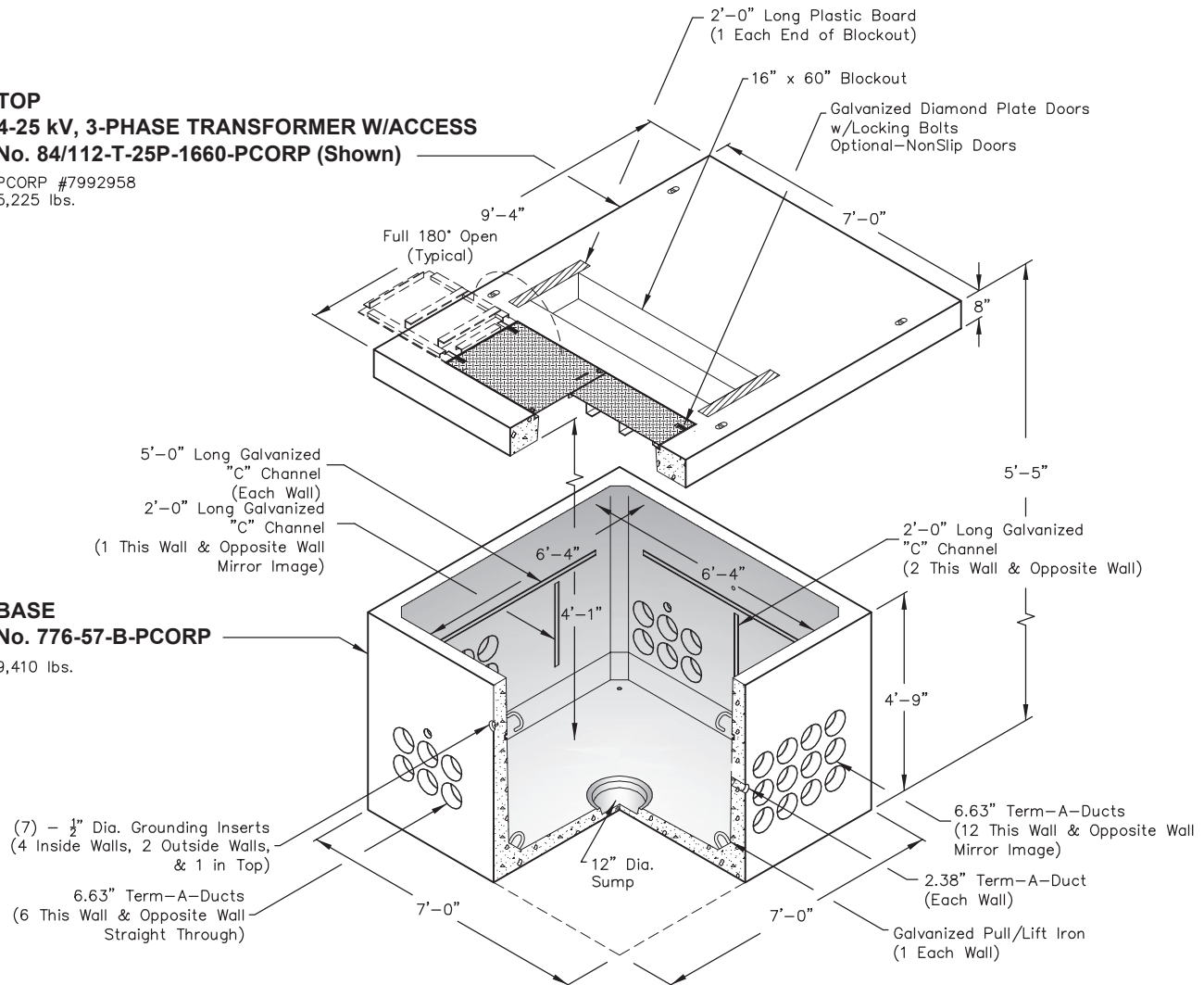
7 x 7, 4-25 kV, 3-Phase 1000-2500 kVA Transformer Padvault Stock Item 7992958
7 x 7, 35 kV, 3-Phase 1000-2500 kVA Transformer Padvault Stock Item 7992959

TOP
4-25 kV, 3-PHASE TRANSFORMER W/ACCESS
No. 84/112-T-25P-1660-PCORP (Shown)

PCORP #7992958
5,225 lbs.

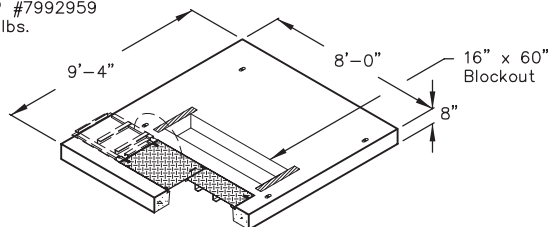
BASE
No. 776-57-B-PCORP

9,410 lbs.



OPTIONAL TOP

35 kV, 3 PHASE 1000-2500 TRANSFORMER W/ACCESS
No. 96/112-T-25P-1660-PCORP
PCORP #7992959
6,160 lbs.



CABINET
HOLD-DOWN CLEAT
(2) - REQUIRED

1 1/4" x 2 1/2" Stainless Steel Hold-Down Cleat
1/2" x 2" Galvanized Lag Screw
1/2" Stainless Steel Belleville Washer

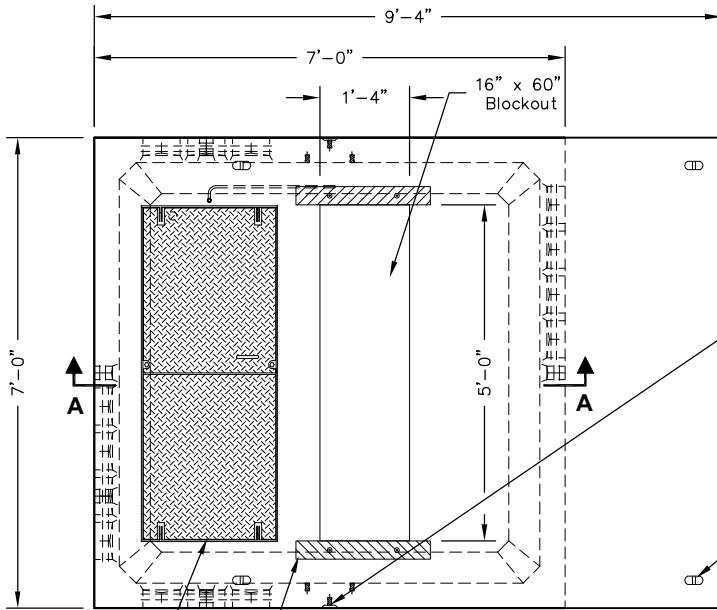
Scale: 1/4" = 1'-0"

Non Skid Covers Available

FOR DETAILS, SEE REVERSE>>

Items Shown Are Subject To Change Without Notice
Issue Date: April 2016

776-TRANS-PCORP



CABINET
HOLD-DOWN CLEAT
(2) - REQUIRED

1 1/4" x 2 1/2" Stainless Steel Hold-Down Cleat
1/2" x 2" Galvanized Lag Screw
1/2" Stainless Steel Bellville Washer

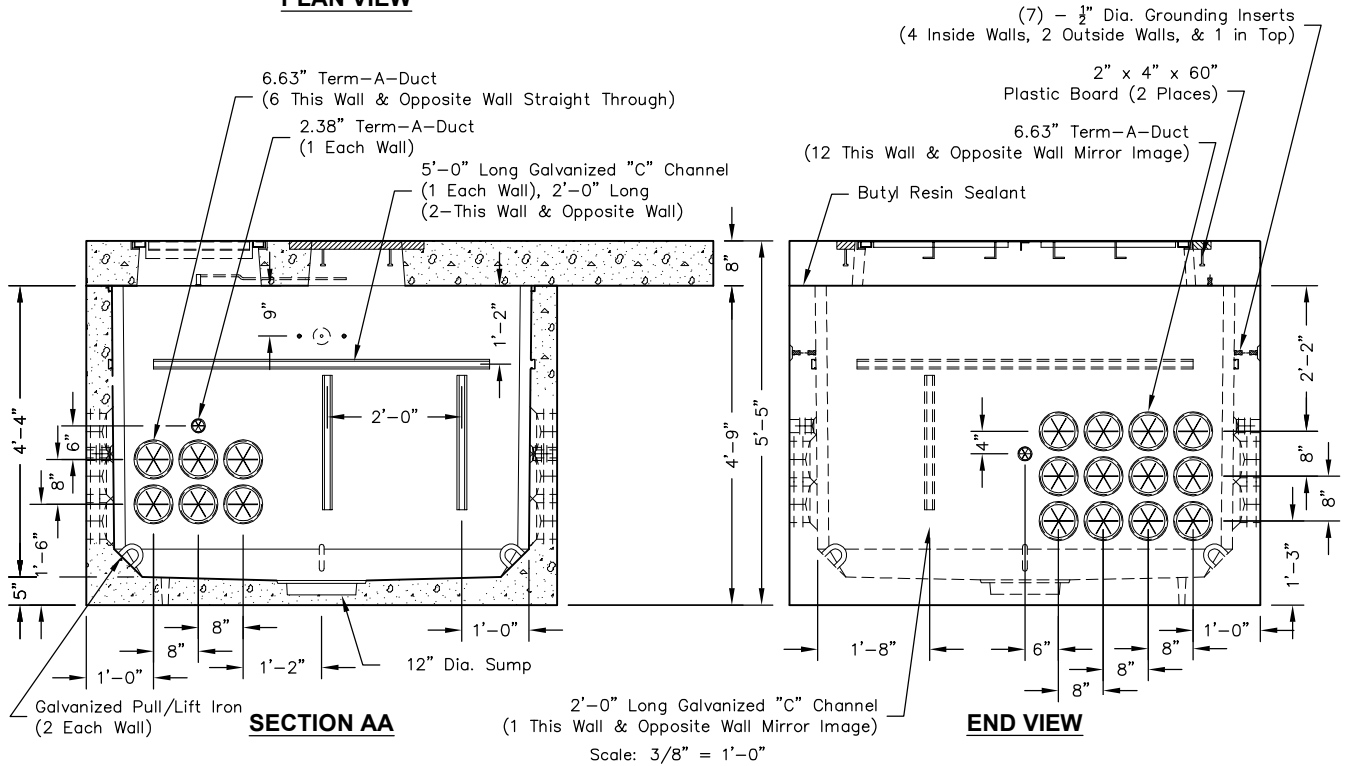
(7) - 1/2" Grounding Inserts
(4 Inside Walls, 2 Outside Walls, & 1 in Top)

(4) - 2-Ton Lift Anchors (Typical)

(2) - 2" x 4" x 24" Plastic Boards

No. 25P Galvanized Diamond Plate Doors
w/Locking Bolts (Typical)
PCORP #7992958

PLAN VIEW



SECTION AA

END VIEW

2'-0" Long Galvanized "C" Channel
(1 This Wall & Opposite Wall Mirror Image)

Scale: 3/8" = 1'-0"