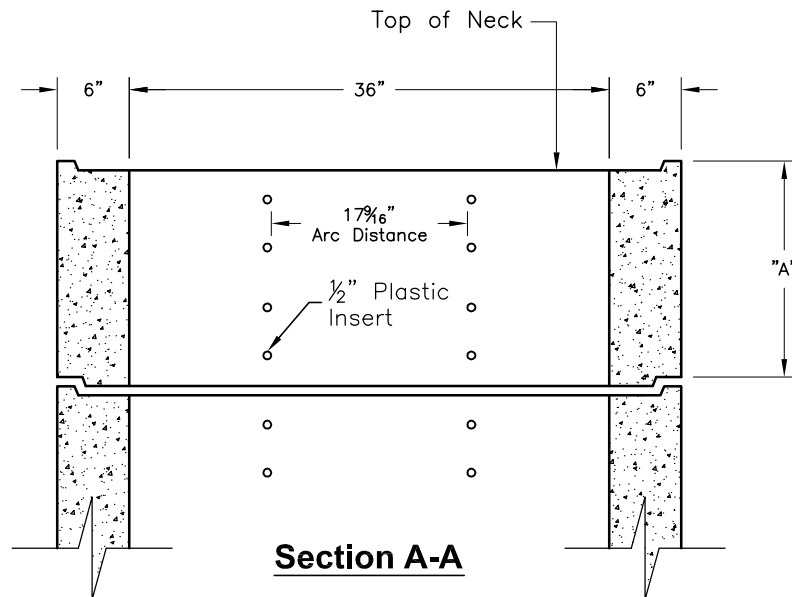


36" Dia. Neck
Weight - See Table

| Neck Data | |
|-----------|--------|
| "A" | Weight |
| 6 | 410 |
| 9 | 610 |
| 12 | 820 |
| 15 | 1020 |
| 18 | 1205 |
| 24 | 1690 |
| 36 | 2500 |



SPECIFICATIONS:

1. Concrete: Design Strength of 5500 PSI at 28 Days.
2. Steel Reinforcement: ASTM A-185.
3. Loading: Designed for HS-20 Loading.

SCALE: N.T.S.