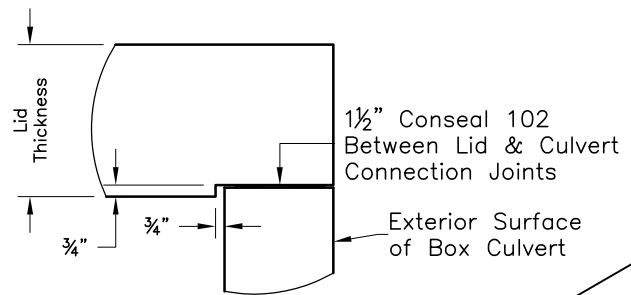
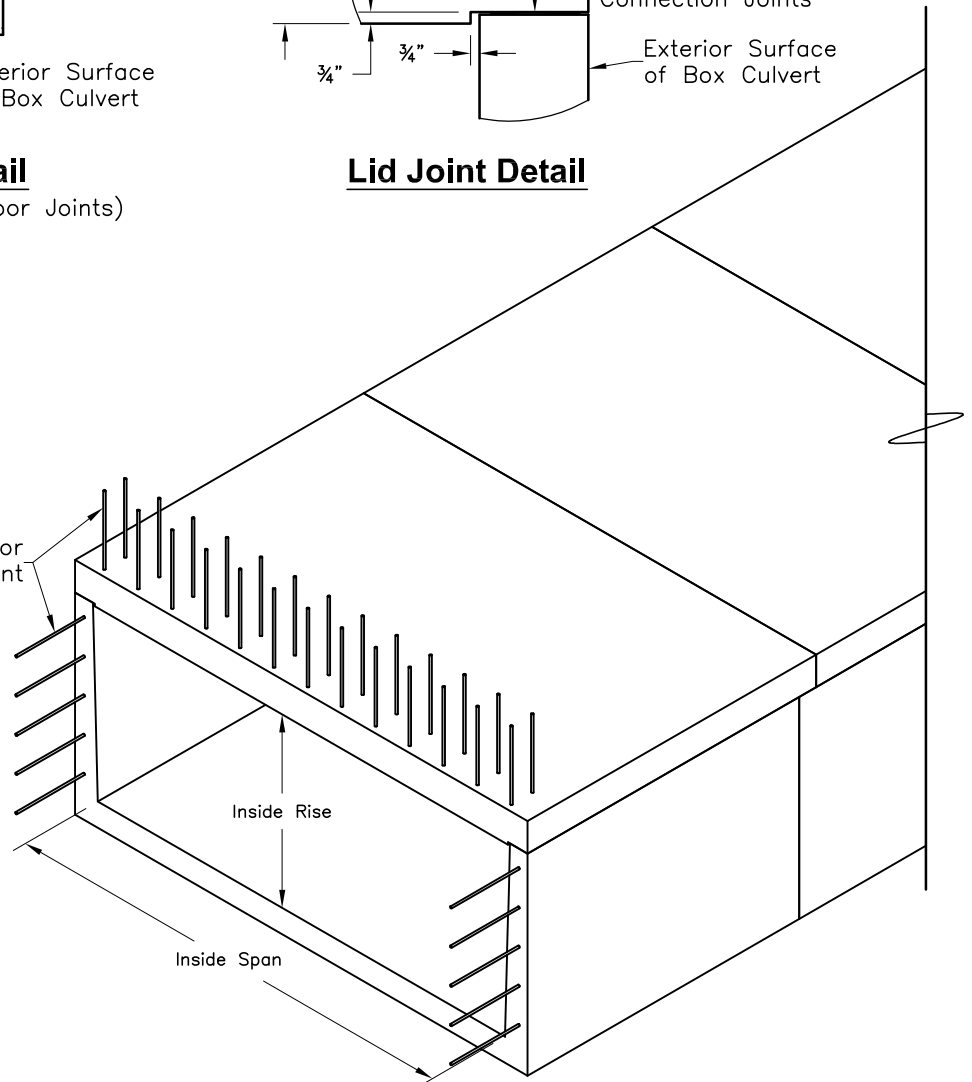

Culvert Joint Detail

(Typical for Culvert Wall & Floor Joints)


Lid Joint Detail

Epoxy Coated Dowel Extensions for Wing-Wall & Head-Wall Attachment

Typical Culvert Sizing		
Span	Max. Rise	Wall Thickness
2'-0"	2'-0"	4"
2'-2"	3'-0"	6"
2'-8"	3'-0"	6"
3'-0"	3'-0"	6"
3'-4"	4'-0"	6"
4'-0"	6'-0"	6"
5'-0"	3'-6"	6"
6'-0"	7'-0"	6"
7'-0"	7'-0"	6"
8'-0"	7'-0"	6"
10'-0"	3'-6"	6"
11'-0"	5'-9"	8"
12'-0"	5'-9"	8"


Split Box Culvert Isometric View

(For Reference Only)

****Inside Rise is Variable in 1" increments up to Max. Rise**
****Different Sizing Than Shown is Available Upon Request**