

712-SWITCH-PCORP

7 x 12, 15 kV, 600 Amp, PME-9/11 Switchgear Padvault, Stock Item 7992788
 7 x 12, 25 kV, 600 Amp, PME-9/11 Switchgear Padvault, Stock Item 7992789
 7 x 12, 15/25 kV, 600 Amp, PME-3 Switchgear 1000 kcmil cable, Padvault, Stock Item 7992790

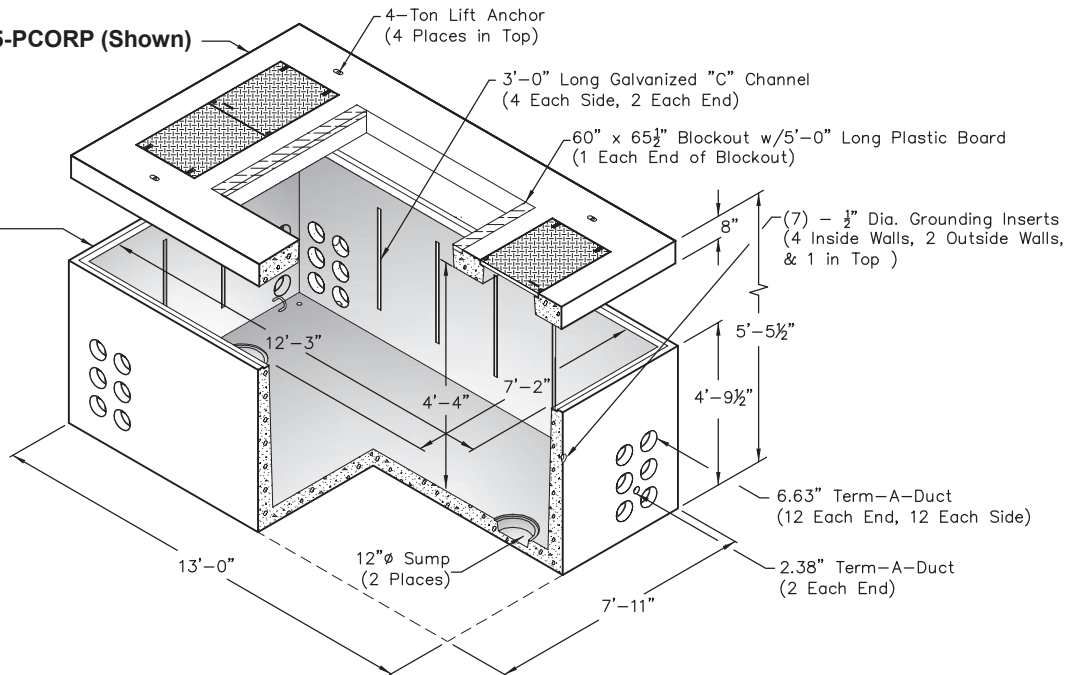
TOP

15 kV, 600 Amp, PM9/11
No. 95/156-T-2-25P-6065-PCORP (Shown)

PCORP #7992788
 5,230 lbs.

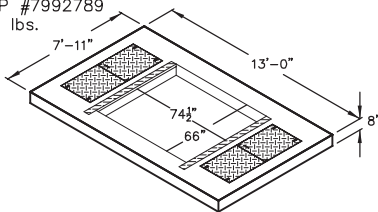
BASE

No. 712-B-PCORP
 18,070 lbs.

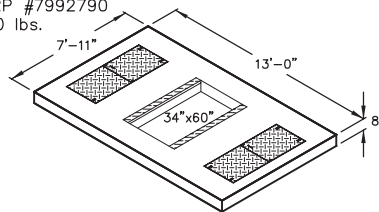


OPTIONAL TOPS

25 kV, 600 Amp, PME-9/11
 No. 95/156-T-2-25P-6674
 PCORP #7992789
 5,420 lbs.



15/25 kV, 600 Amp, PME-3
 No. 95/156-T-2-25P-3460
 PCORP #7992790
 7,400 lbs.



Note: All Switch Tops w/Ground

Scale: 3/16" = 1'-0"

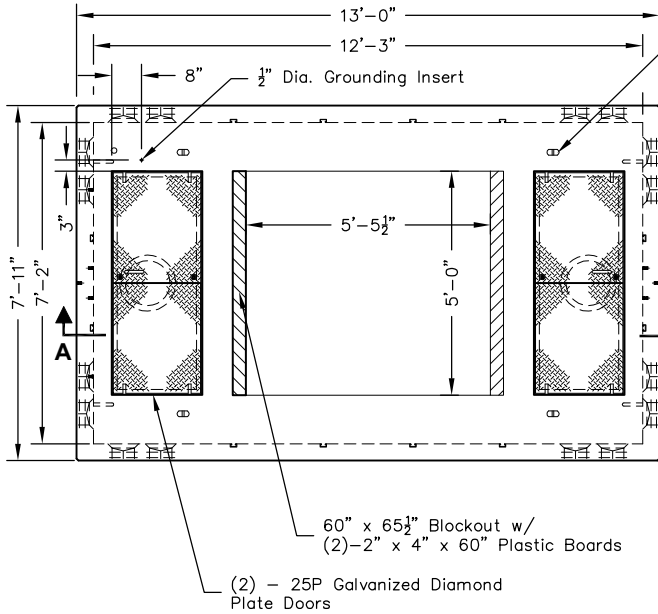
Non Skid Covers Available

FOR DETAILS, SEE REVERSE>>

Items Shown Are Subject To Change Without Notice
 Issue Date: April 2016

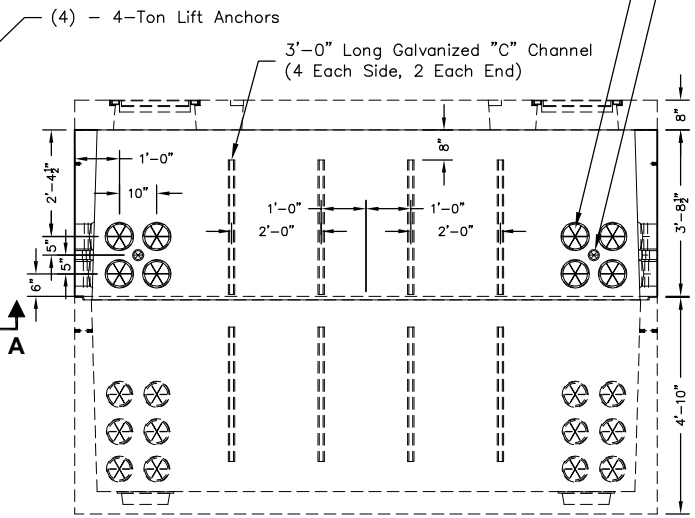
712-SWITCH-PCORP

(8) - 2.38 Term-A-Duct
(2 Each Side, 2 Each End)
(32) - 6.63 Term-A-Duct
(8 Each Side, 8 Each End)



PLAN VIEW

No. 95/156-T-2-25P-6065
(15 kV, 600 AMP, PM9/11 SWITCHGEAR TOP)
PCORP #7992788



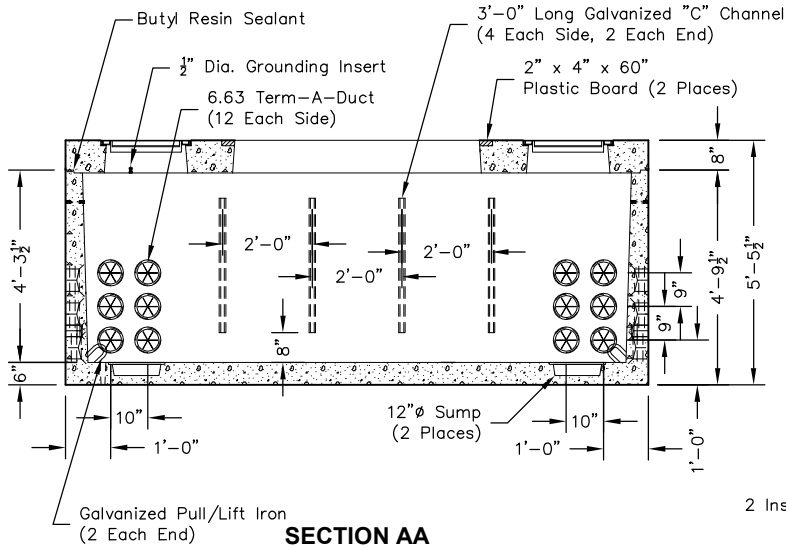
OPTIONAL RISER

No. 712-44-RISER-PCORP #7999125

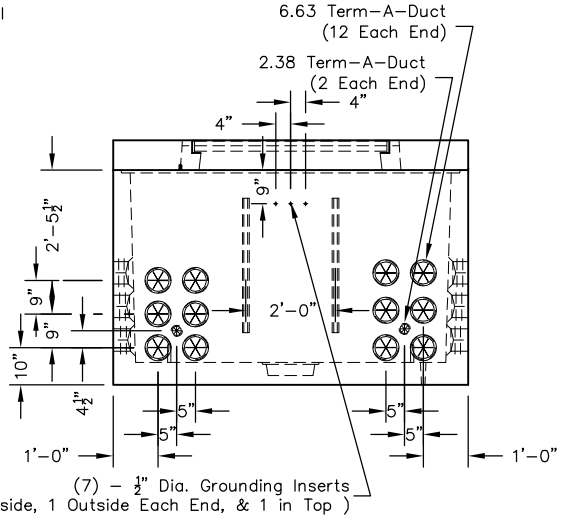


CABINET
HOLD-DOWN CLEAT
(4) - REQUIRED

1 1/4" x 2 1/2" Stainless Steel Hold-Down Cleat
1/2" x 2" Galvanized Lag Screw
1/2" Stainless Steel Belleville Washer



SECTION AA



END VIEW

Scale: 1/4" = 1'-0"