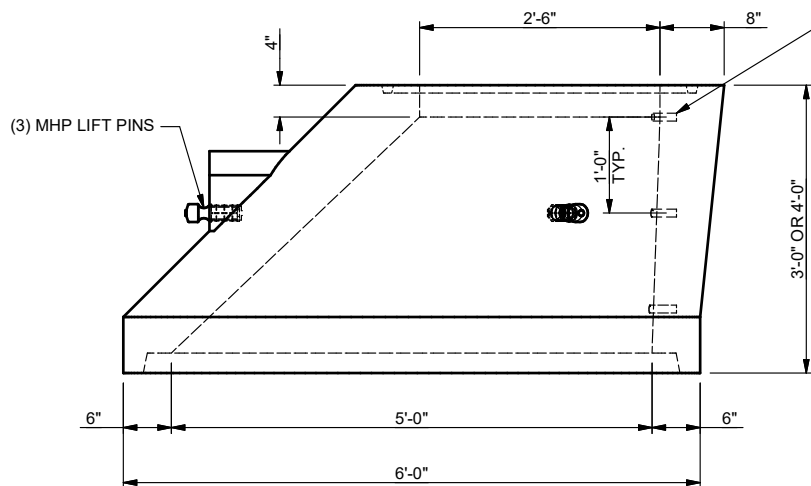


**PLAN VIEW**  
SCALE 1/2"=1'-0"



**ELEVATION VIEW**  
SCALE 1/2"=1'-0"



INDENTS FOR  
OPTIONAL MANHOLE STEPS  
(INTERIOR WALL)

### STRUCTURAL NOTES

1. CONCRETE: 28 DAY COMPRESSIVE STRENGTH  $f_c = 5,000$  psi
2. REBAR: ASTM A-615 GRADE 60
3. MESH: ASTM A-185 GRADE 65  
ASTM A-497 GRADE 65
4. DESIGN: ACI 318-08 BUILDING CODE  
ASTM C478 "STANDARD SPECIFICATION FOR  
PRECAST CONCRETE MANHOLE SECTIONS"  
AASHTO M199
5. LOADS: HS20-44 W/30% IMPACT PER AASHTO  
120 PCF SOIL DENSITY
6. SOIL COVER: 0'-0" TO 2'-6"

### GENERAL NOTES

1. ALL JOINTS SHALL BE SEALED USING CONSEAL CS-102  
BUTYL RUBBER ROPE.

**SIDE VIEW**  
SCALE 1/2"=1'-0"



THIS DOCUMENT IS THE PROPERTY OF OLDCASTLE PRECAST, INC. IT IS SUBMITTED FOR REFERENCE PURPOSES ONLY AND SHALL NOT BE USED IN ANY WAY INJURIOUS TO THE INTERESTS OF THE SAID COMPANY.

COPYRIGHT ©2011 OLDCASTLE PRECAST, INC ALL RIGHTS RESERVED

**MH 60 ECC CONE WITH 30"  
OPENING**

CUSTOMER  
STANDARD

DATE	SALES	DRAWN	ENGINEER	CHECKED	SALES ORDER
8/19/2011	JJ	AT			
DRAWING NUMBER			REVISION	SHEET	
60 x 30 CONE.idw			DATE	1 OF 6	