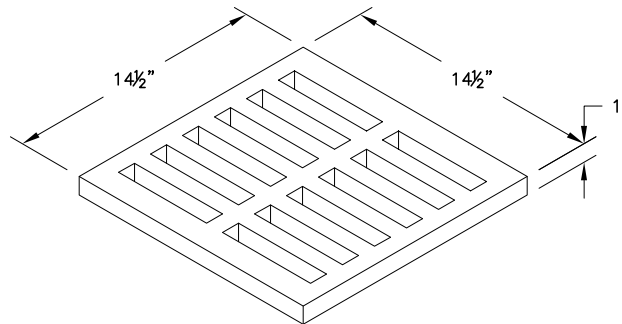
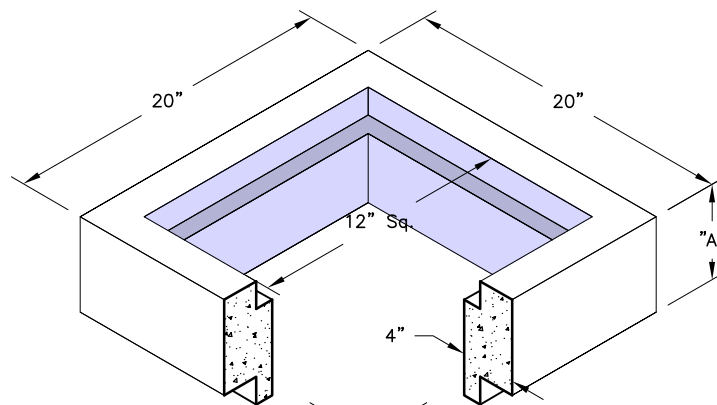


Cast Iron Grate

Weight – 18 Lbs.
Open Area 76 Sq. Inches

Riser

Weight – See Table

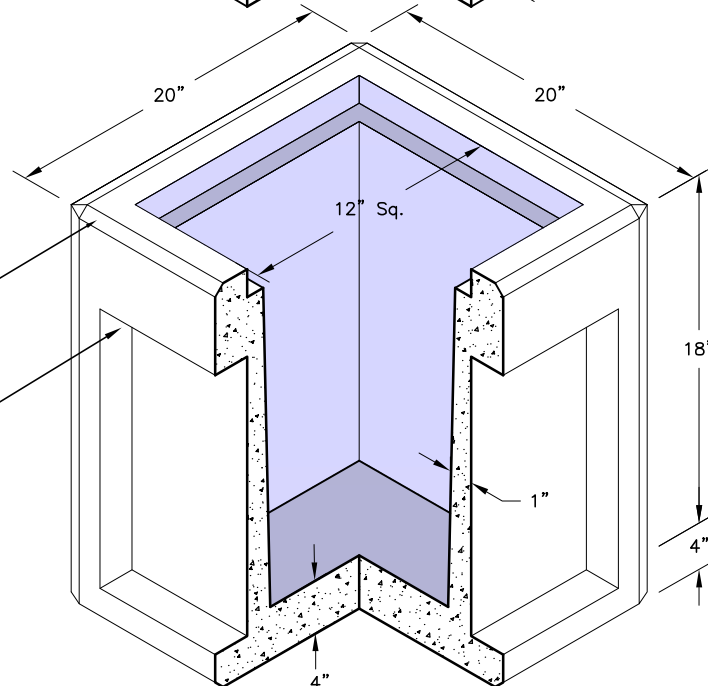
Extension	
A	Weight
6"	94 Lbs.
12"	188 Lbs.


Body

Weight – 339 Lbs.

1/2" Chamfer (TYP. 4
Corners, Top & Bottom)

12" Wide x 16" Tall x 3"
Deep Thin-wall Knockouts
Typical on all Four Walls
For 10" PVC and Smaller.


GENERAL NOTES:

1. Bedding Shall be in Accordance With Job and Plan Specifications.