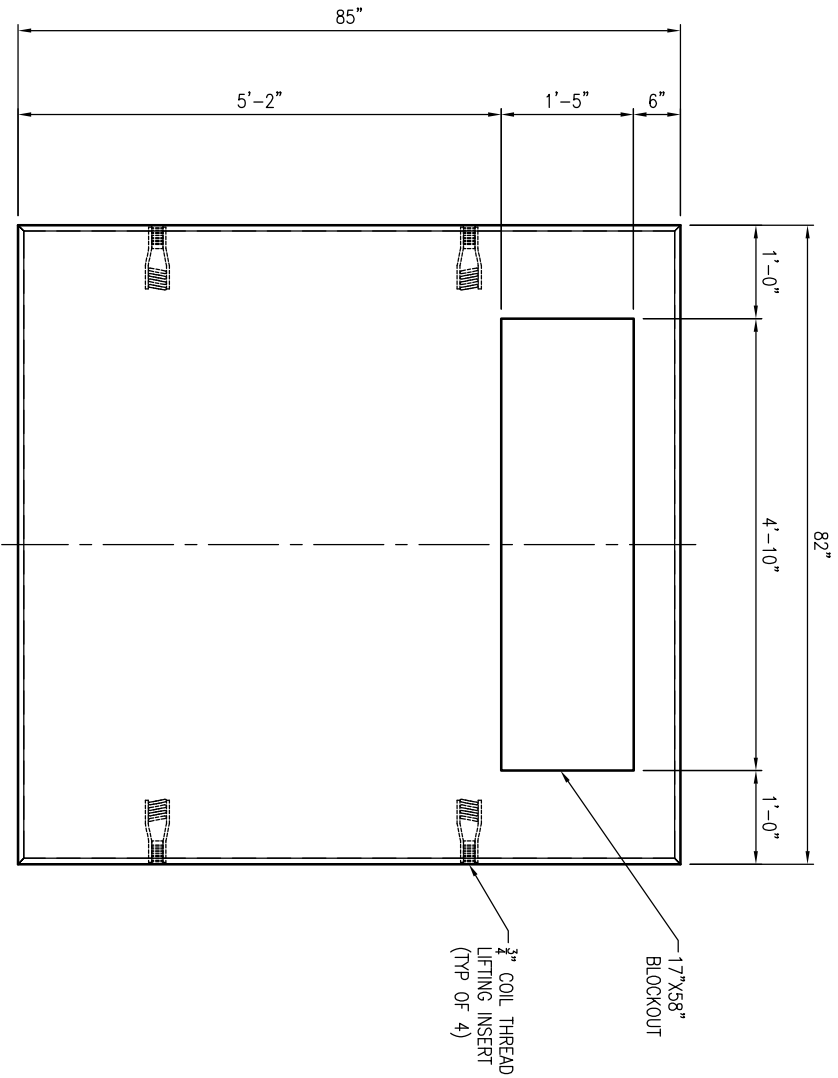
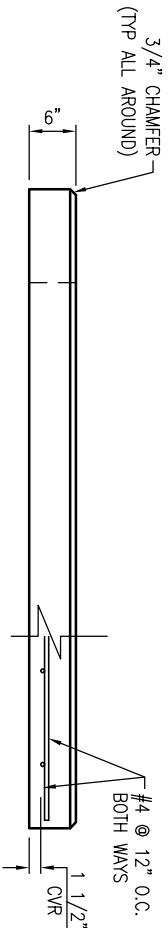


GENERAL NOTES:

1. CONCRETE: 28 DAY COMPRESSIVE STRENGTH $f'_c = 5,000$ PSI (MIN).
2. REINFORCING: ASTM A-615, GRADE 60.
3. SLAB DESIGNED FOR PAD MOUNTED TRANSFORMER PER COOPER POWER SYSTEMS DRAWING DATED 07/09/2013 REF: P3DV03R02M07.
4. SLAB SHALL BE SUPPORTED BY A 3" MIN LAYER OF LEVEL COMPACTED CRUSHED STONE OR SAND BED.

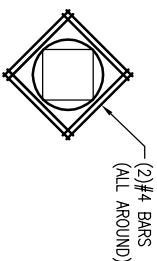


PLAN VIEW
SCALE: 1/2" = 1'-0"



VIEW A
SCALE: 1/2" = 1'-0"

1. USE EXACT BAR SIZE AND SPACING AS NOTED ABOVE.
2. ALL STEEL CUT OUT FOR OPENINGS WILL BE REPLACED. HALF REINFORCEMENT ON EACH SIDE OF OPENING. INCLUDE (2) ADDITIONAL #4 DIAGONAL BARS AROUND OPENING (SEE TYPICAL REINFORCEMENT FOR ALL OPENINGS)



TYPICAL REINFORCEMENT FOR OPENINGS
SCALE: N.T.S.

REVISIONS

REV	DATE	BY	SHEET	DESCRIPTION OF REVISION	REQUESTED BY
A					
B					

SECTION	WEIGHT (lbs)	Concrete (CY)
TOTAL	3,150	0.78



Oldcastle Precast
4666 STOUGH RD. CONCORD, NC
OFFICE 704-778-4488, FAX 704-778-4480

THIS DOCUMENT IS THE PROPERTY OF OLDCASTLE PRECAST, INC. IT IS CONFIDENTIAL. SUBMITTED FOR REFERENCE PURPOSES ONLY AND SHALL NOT BE USED IN ANY MANNER WITHOUT THE WRITTEN PERMISSION OF OLDCASTLE PRECAST, INC. ALL RIGHTS RESERVED. COPYRIGHT © 2013 OLDCASTLE PRECAST, INC. ALL RIGHTS RESERVED

82"x85"x6" OD DUKE POWER PAD
SUBMITTAL LAYOUT

STANDARD LAYOUT

DATE	SALES	DRAWN	ENGINEER	CHECKED	SALES ORDER
5/22/15					
DRAWING NUMBER	DRAWING NUMBER				SHEET
8206-FIBR-Pad	8206-FIBR-Pad				1 OF 1