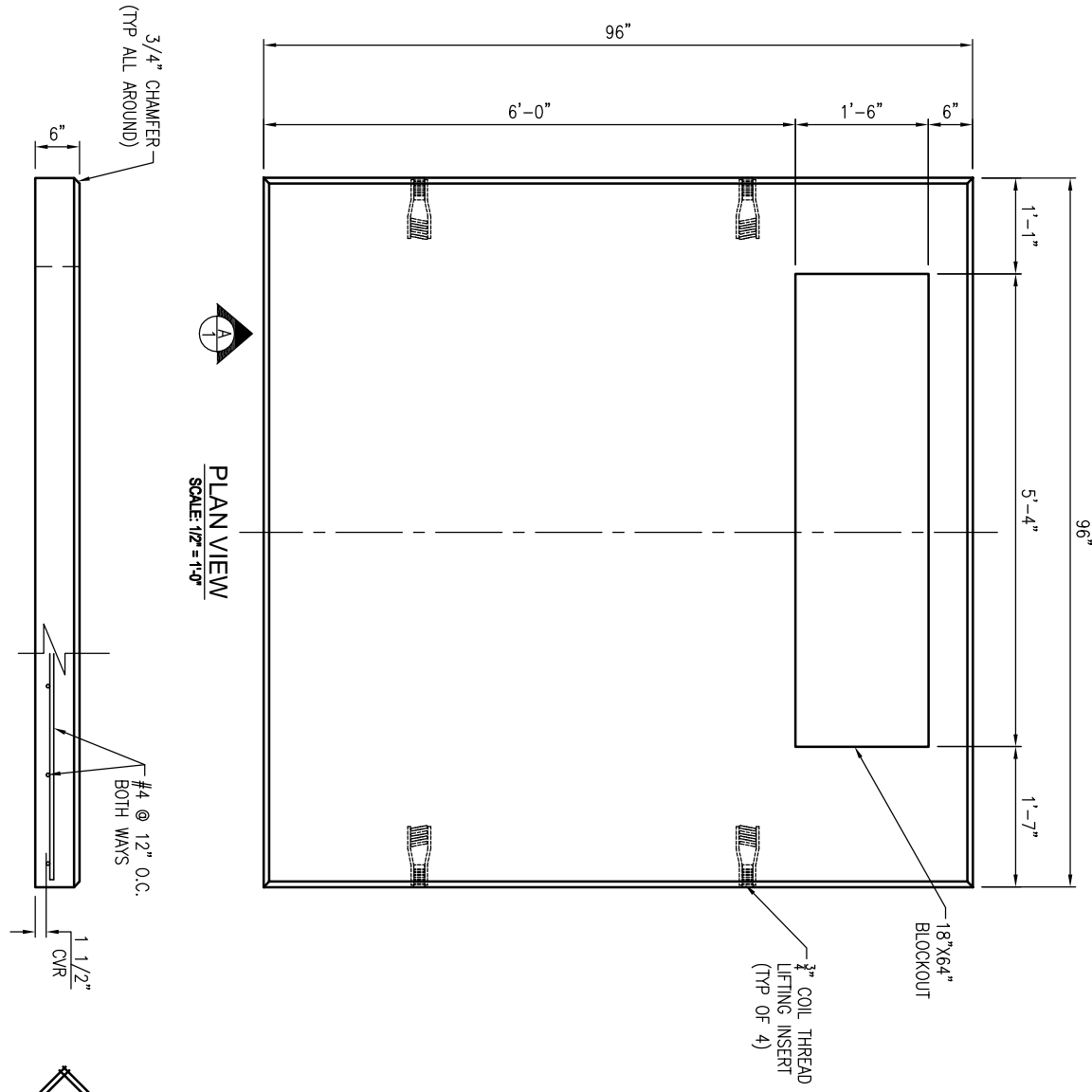


**GENERAL NOTES:**

1. CONCRETE: 28 DAY COMPRESSIVE STRENGTH  $f'_c = 5,000$  PSI (MIN).
2. REINFORCING: ASTM A-615, GRADE 60.
3. SLAB DESIGNED FOR PAD MOUNTED TRANSFORMER PER COOPER POWER SYSTEMS DRAWING DATED 07/09/2013 REF: P3DV03R02M07.
4. SLAB SHALL BE SUPPORTED BY A 3" MIN LAYER OF LEVEL COMPACTED CRUSHED STONE OR SAND BED.



**PLAN VIEW**  
SCALE: 1/2" = 1'-0"

**VIEW-A**  
SCALE: 1/2" = 1'-0"

**TYPICAL REINFORCEMENT FOR OPENINGS**  
SCALE: N.T.S.

1. USE EXACT BAR SIZE AND SPACING AS NOTED ABOVE.
2. ALL STEEL CUT OUT FOR OPENINGS WILL BE REPLACED. HALF REINFORCEMENT ON EACH SIDE OF OPENING. INCLUDE (2) ADDITIONAL #4 DIAGONAL BARS AROUND OPENING (SEE TYPICAL REINFORCEMENT FOR ALL OPENINGS)

**REVISIONS**

REV	DATE	BY	SHEET	DESCRIPTION OF REVISION	REQUESTED BY
A					
B					

SECTION	WEIGHT (lbs)	Quantity (CY)
TOTAL	4,200	1.04

**Oldcastle Precast**  
4666 STOUGH RD, CONCORD, NC  
OFFICE 704-778-4488, FAX 704-778-4480

THIS DOCUMENT IS THE PROPERTY OF OLDCASTLE PRECAST, INC. IT IS CONFIDENTIAL. SUBMITTED FOR REFERENCE PURPOSES ONLY AND SHALL NOT BE USED IN ANY MANNER WITHOUT THE WRITTEN PERMISSION OF OLDCASTLE PRECAST, INC. ALL RIGHTS RESERVED. COPYRIGHT © 2013 OLDCASTLE PRECAST, INC. ALL RIGHTS RESERVED.

**96"X96"X6" OD DUKE POWER PAD**  
SUBMITTAL LAYOUT

CUSTOMER STANDARD					
DATE	SALES	DRAWN	ENGINEER	CHECKED	SALES ORDER
10/14/14					
DRAWING NUMBER	REV/DATE	REVISION	SHEET		
9696-F18T-Pad	05/14/13	1	OF 1		