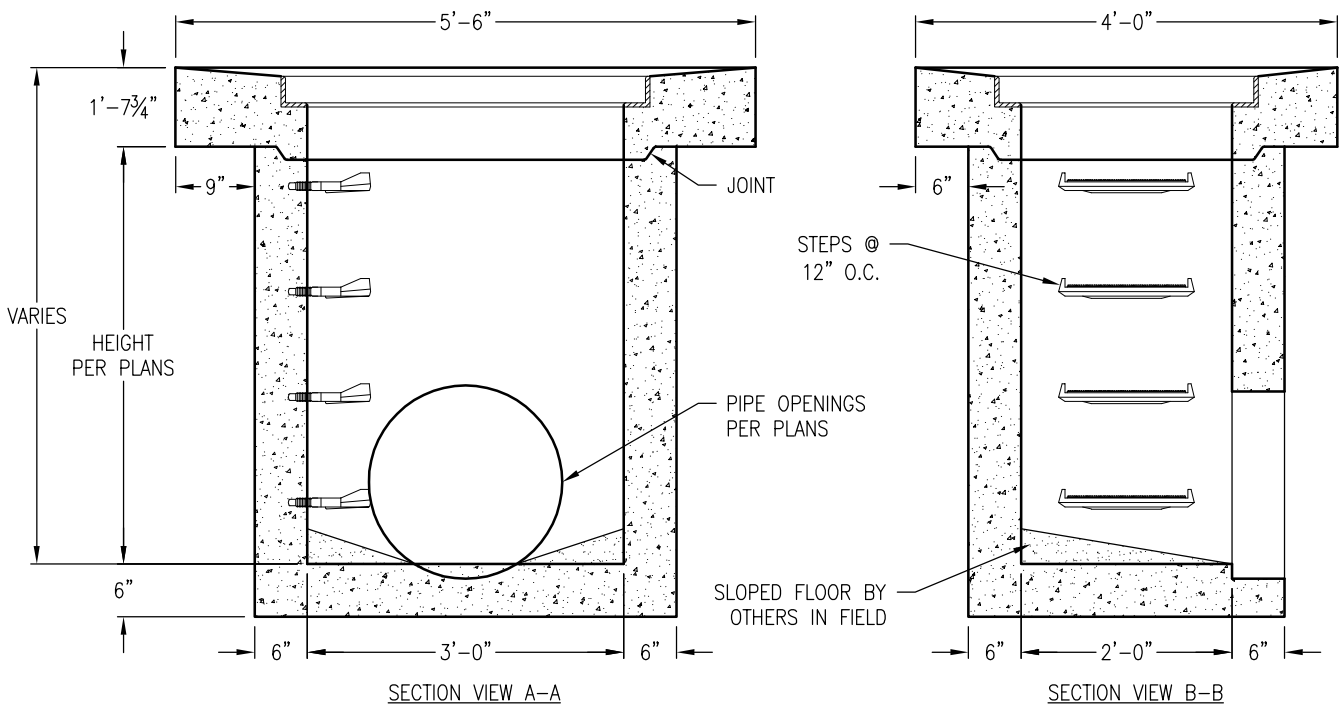
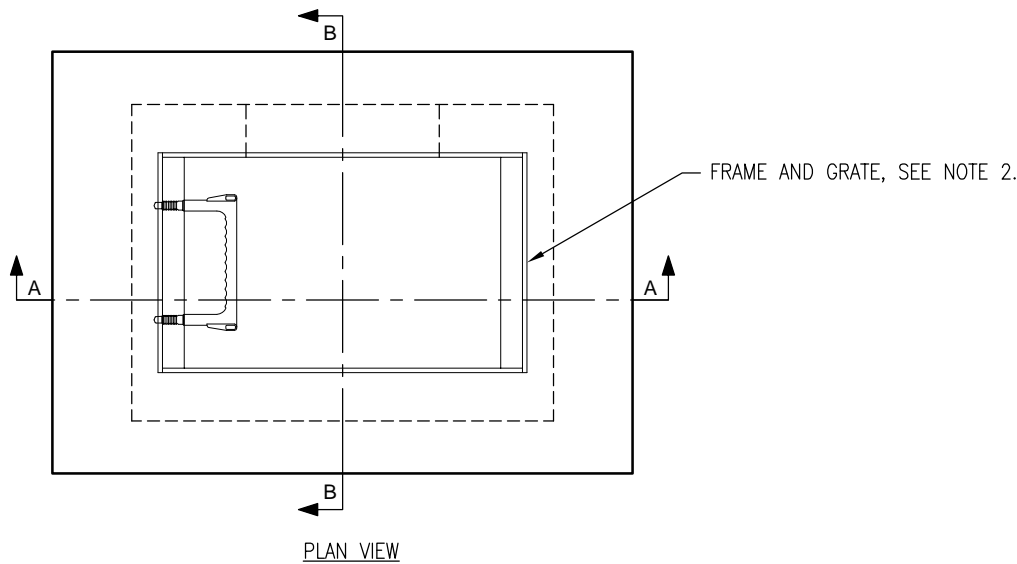


NOTES:

1. REINFORCING STEEL SHALL CONFORM TO REQUIREMENTS AND PROVISIONS OF THE CITY OF OAKLAND.
2. INLET FRAME AND GRATE SHALL BE STANDARD TYPE DESCRIBED IN THE STANDARD DETAILS OF THE SPECIFICATION OF THE CITY OF OAKLAND.
3. SLOPED FLOOR BY OTHERS IN FIELD.



DRAWING MAY NOT CONFORM TO THE MOST CURRENT SPECIFICATION