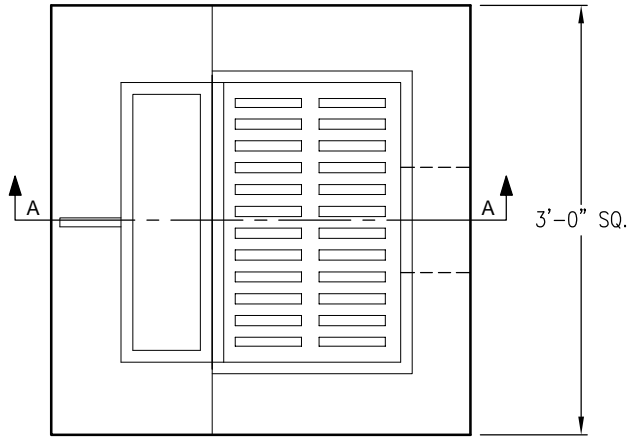


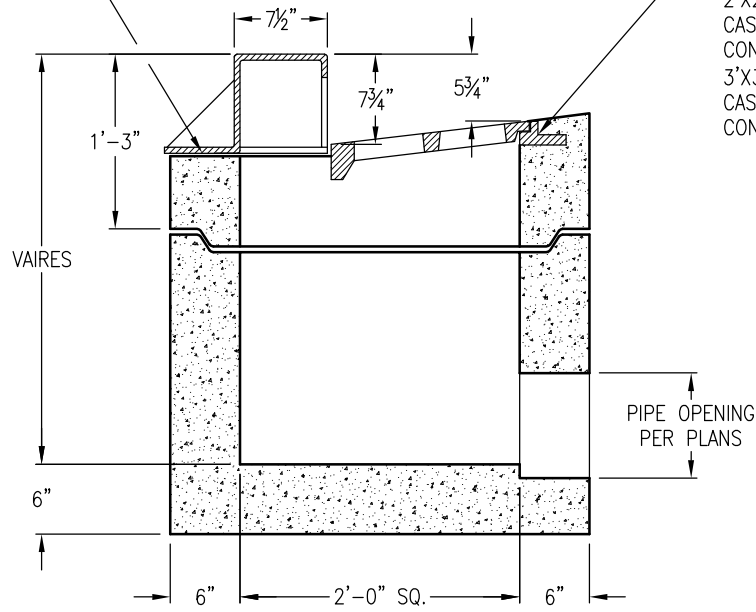
NOTES:

1. OPTION: BASE WITH EXPOSED REBAR AND D&L I-3601 FRAME, GRATE AND HOOD SHIPPED LOOSE.
2. 3'-0"X3'-0" (LARGE UNIT) ALSO AVAILABLE.
3. SLOPED FLOOR BY OTHERS IN FIELD.



PLAN VIEW

SHELF TO PLACE HOOD UPON IN FIELD, PLACE CONCRETE BERM AROUND HOOD IN FIELD, BY OTHERS



SECTION VIEW A-A

FRAME AND GRATE NOTES:
 2'X2' SMALL UNIT: D&L I-3601 FRAME CAST IN; LOOSE HOOD ON PRECAST CONCRETE INLET.
 3'X3' LARGE UNIT: D&L I-3602 FRAME CAST IN; LOOSE HOOD ON PRECAST CONCRETE INLET.

DRAWING MAY NOT CONFORM TO THE MOST CURRENT SPECIFICATION



Oldcastle Precast[®]
 Northern California
 Madera ■ Morgan Hill ■ Pleasanton ■ Santa Rosa ■ Stockton ■ Tulare
 Phone: 925-750-6650 Fax: 925-750-6660

SAN JOSE SMALL UNIT
 FILE NAME: AGN-12.DWG
 REVISED: MARCH 2016
www.oldcastleprecast.com

**SAN JOSE SMALL UNIT
 MOUNTAIN VIEW & MILPITAS
 AGENCY STRUCTURES**
 Copyright © 2016 Oldcastle Precast, Inc.