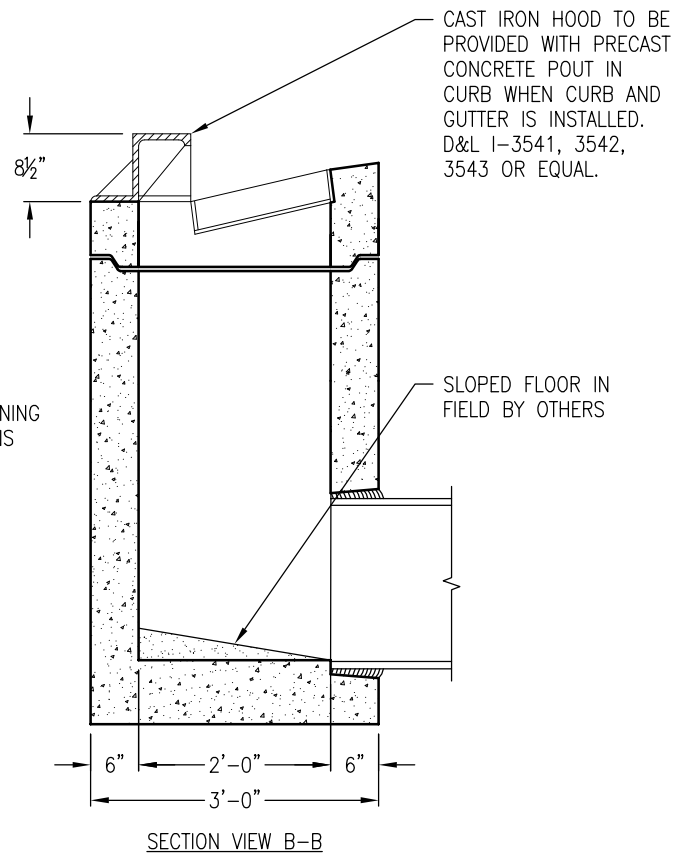
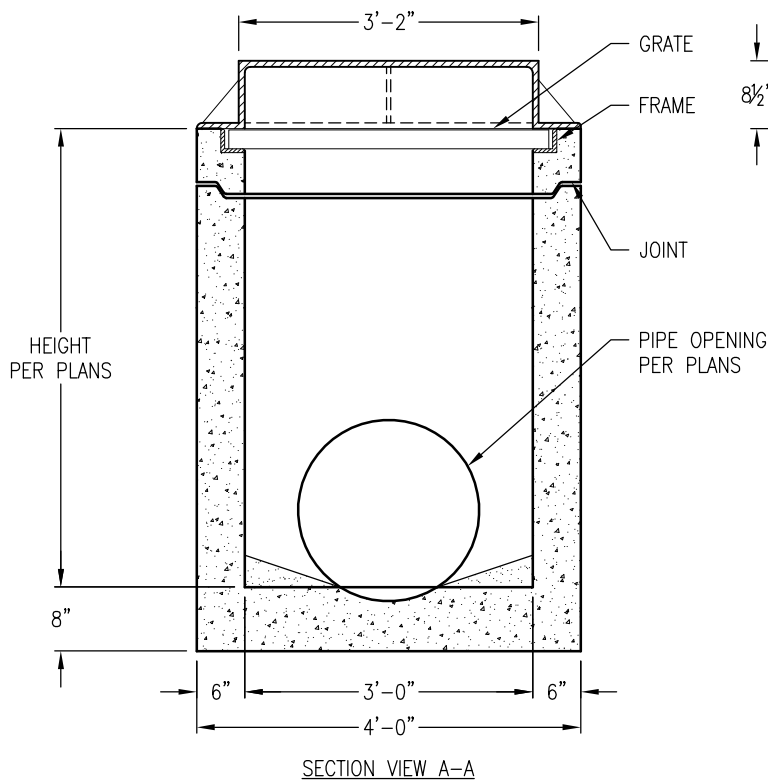
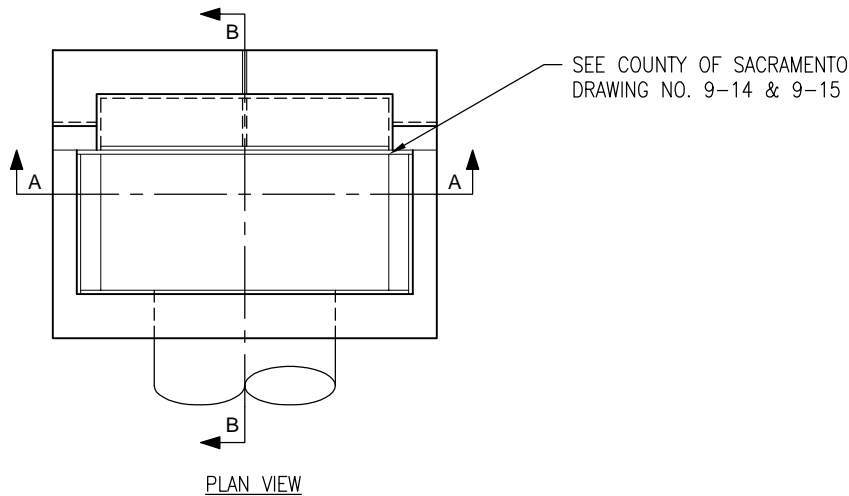


NOTES:

1. REINFORCING STEEL SHALL CONFORM TO REQUIREMENTS AND PROVISIONS PER THE COUNTY OF SACRAMENTO.
2. SLOPED FLOOR BY OTHERS IN FIELD.

AGN-13



DRAWING MAY NOT CONFORM TO THE
MOST CURRENT SPECIFICATION