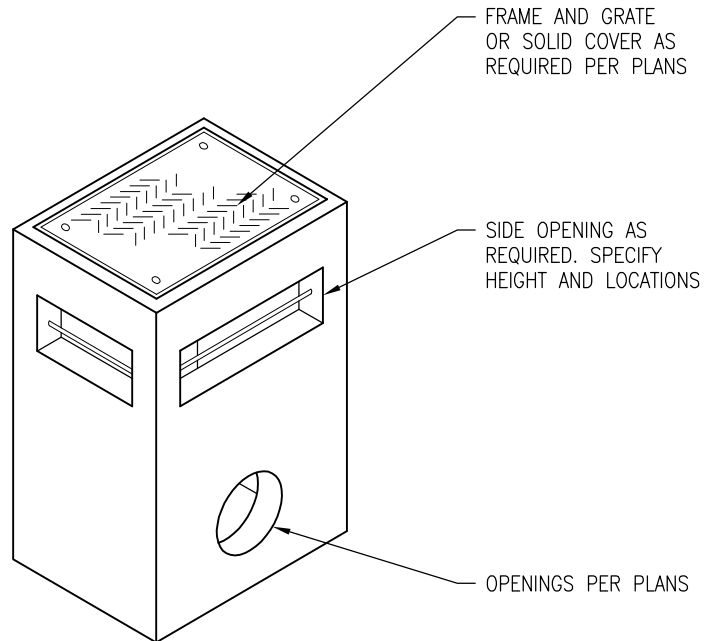


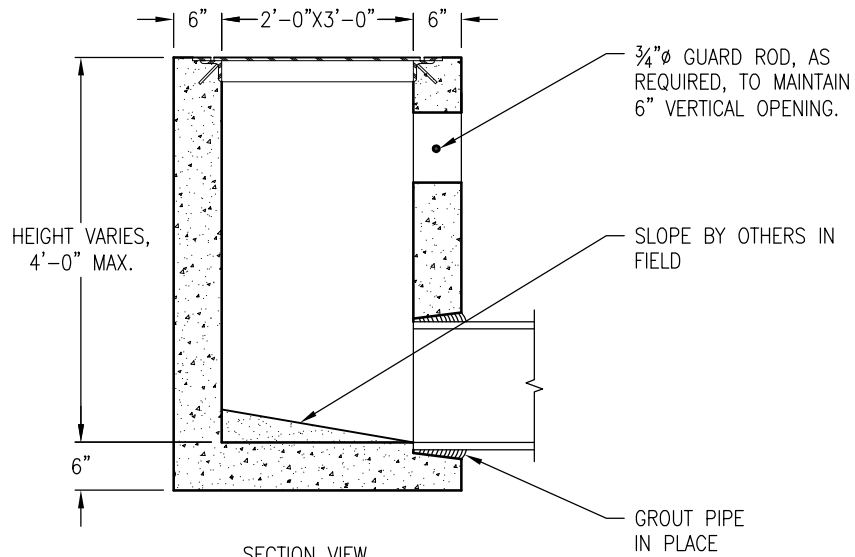
NOTES:

AGN-2

1. TYPE 'C' INLETS MAY BE SPECIFIED WITH EITHER A FRAME & GRATE OR A FRAME & COVER. GENERALLY, INLETS WITH SIDE OPENINGS WILL HAVE SOLID COVERS.
2. FRAME, GRATES AND COVERS SHALL BE PER CONTRA COSTA COUNTY STANDARD PLANS.
3. INLETS OVER 4'-0" DEEP IN PUBLIC RIGHT-OF-WAY MUST TRANSITION TO A 48"Ø MANHOLE TRANSITION SLAB & BASE WITH STEPS INSTALLED.
4. INLET INCLUDES STEPS.



ISOMETRIC VIEW



SECTION VIEW

DRAWING MAY NOT CONFORM TO THE MOST CURRENT SPECIFICATION