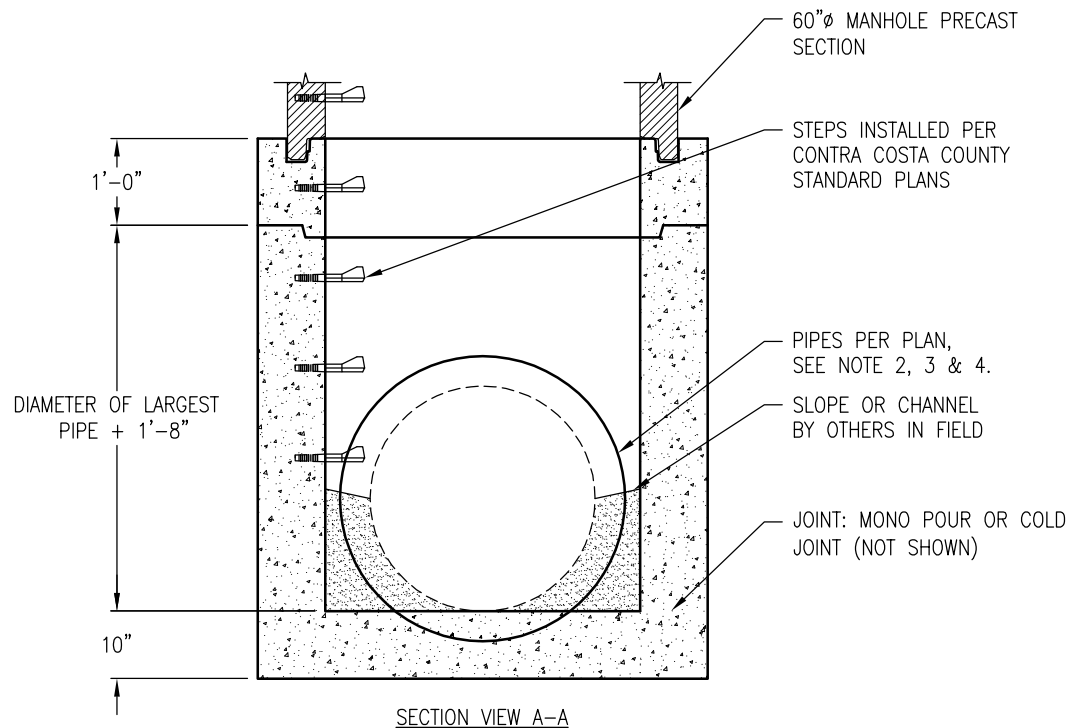
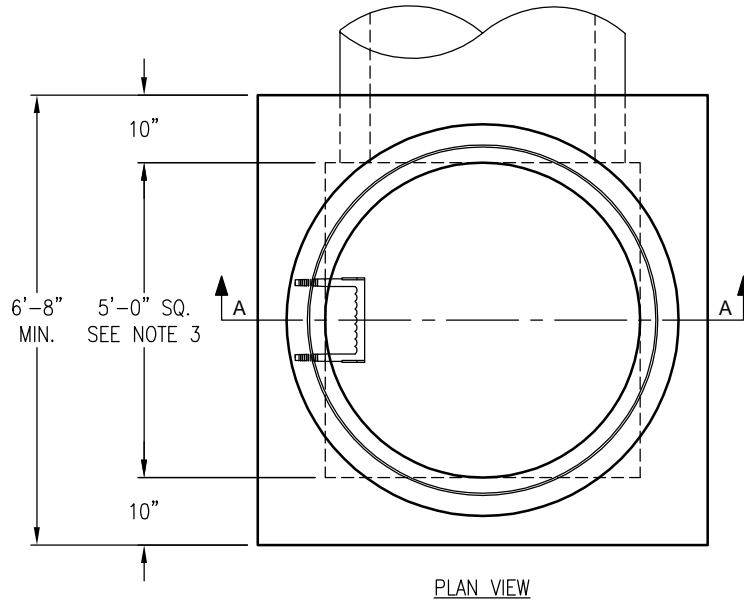


## NOTES:

1. INLET AND OUTLETS PIPES SHALL NOT INTERCEPT A MANHOLE BASE THROUGH A CORNER. IF THE SKEW ANGLE IS TOO GREAT, OR LARGE PARALLEL PIPES PREVENT THE OPENING IN A SINGLE WALL; USE A TYPE V MANHOLE BASE PER CONTRA COSTA COUNTY STANDARD PLANS.
2. TYPE III MANHOLE BASES ARE FOR USE WITH PIPE UP TO 60" IN DIAMETER.
3. HOLES CAST TO ACCOMMODATE PIPING.
4. CALL FOR ADDITIONAL INFORMATION ABOUT SPECIAL APPLICATIONS.



WEIGHT OF TRANSITION SLAB: 2,990 LBS  
 WEIGHT OF WALL SECTION: 2,465 LBS/FT  
 WEIGHT OF FLOOR SECTION: 4,090 LBS

DRAWING MAY NOT CONFORM TO THE  
 MOST CURRENT SPECIFICATION