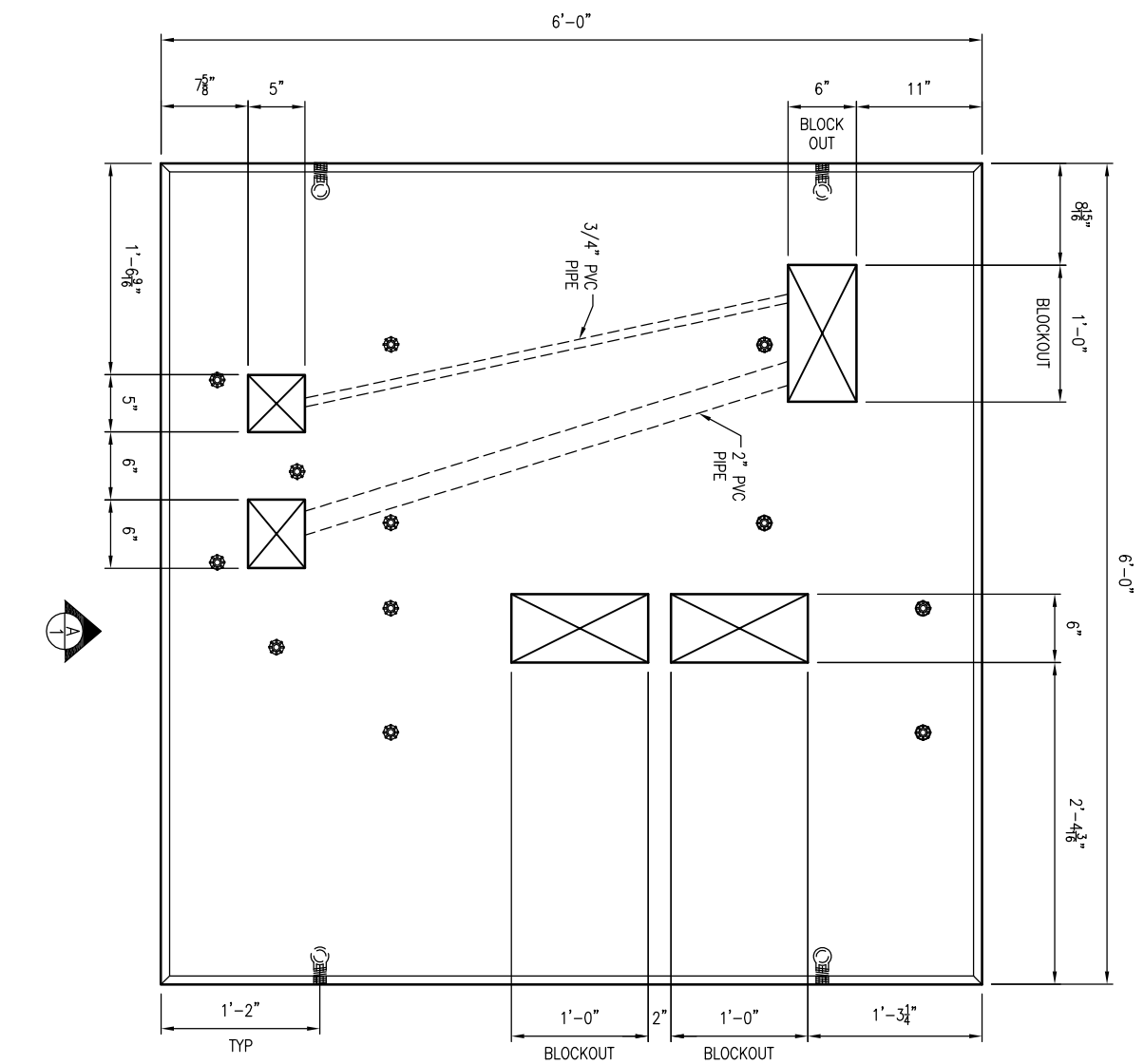
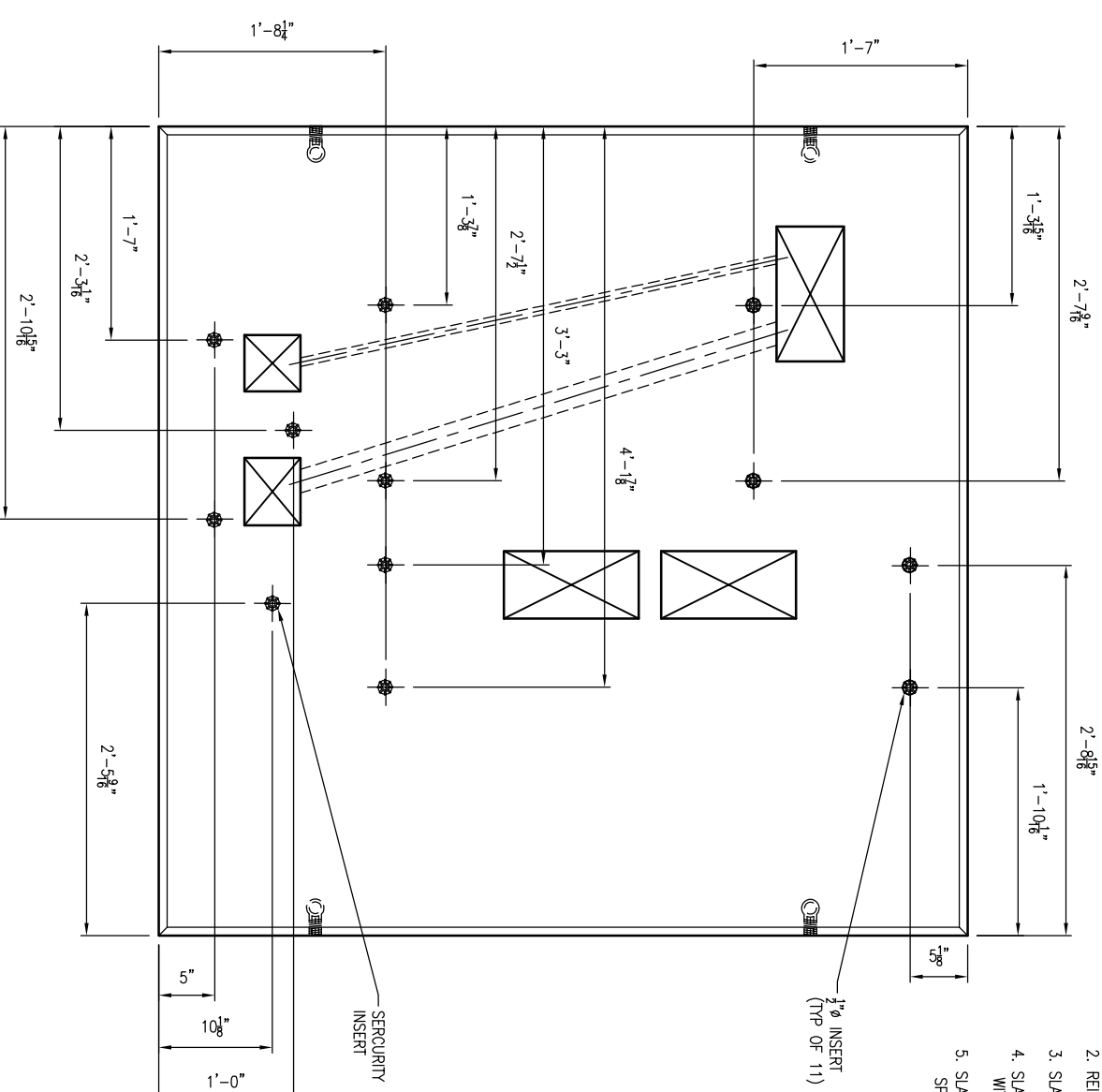


GENERAL NOTES:

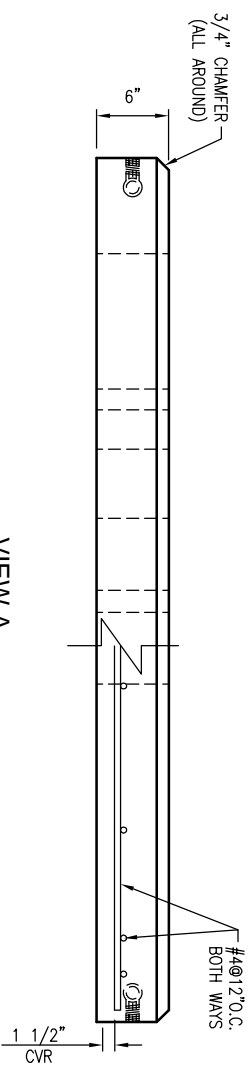
1. CONCRETE: 28 DAY COMPRESSIVE STRENGTH $f'_c = 4,500$ PSI (MIN).
2. REINFORCING: ASTM A-615, GRADE 60.
3. SLAB DESIGNED FOR AIO 248 CABINET LOAD ONLY.
4. SLAB DESIGNED FOR 150 MPH WIND LOAD, IN ACCORDANCE WITH ASCE 7-10.
5. SLAB SHALL BE SUPPORTED IN ACCORDANCE WITH AT&T PROJECT SPECIFICATIONS (I.E. LEVEL AND COMPACTED BEARING SURFACE).



PLAN VIEW (BLOCKOUTS)
SCALE: 3/4" = 1'-0"



PLAN VIEW (INSERTS)
SCALE: 3/4" = 1'-0"

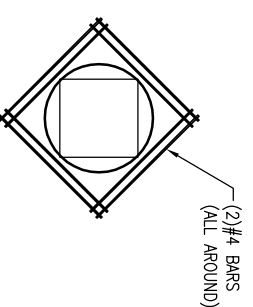


VIEW A
SCALE: 3/4" = 1'-0"

1. USE EXACT BAR SIZE AND SPACING AS NOTED ABOVE.
2. ALL STEEL CUT OUT FOR OPENINGS WILL BE REPLACED. HALF REINFORCEMENT ON EACH SIDE OF OPENING. INCLUDE (2) ADDITIONAL #4 DIAGONAL BARS AROUND OPENING (SEE TYPICAL REINFORCEMENT FOR ALL OPENINGS)

REVISIONS

REVISION	DATE	BY	SHEET	DESCRIPTION OF REVISION	REQUESTED BY
A	5/14/2013	LD	1	ADDED AT&T PIN NUMBER TO TITLEBLOCK	CONTRACTOR
B					



TYPICAL REINFORCEMENT FOR OPENINGS
SCALE: N.T.S.

SECTION	WEIGHT	CONCRETE(QTY)
TOTAL	2,550	0.63



THIS DOCUMENT IS THE PROPERTY OF OLDCASTLE PRECAST, INC. IT IS CONSIDERED LOANED TO YOU FOR YOUR PROJECT ONLY. IT IS NOT TO BE REPRODUCED OR TRANSMITTED IN ANY FORM OR BY ANY MEANS, ELECTRONIC OR MECHANICAL, WITHOUT THE WRITTEN PERMISSION OF OLDCASTLE PRECAST, INC. COPYRIGHT © 2010 OLDCASTLE PRECAST, INC. ALL RIGHTS RESERVED.

6'X6'X6" OD "AIO" 248 LP PAD
SUBMITTAL LAYOUT

CUSTOMER		AT & T (PIN# ATT.100002540)	
DATE	6/24/14	SLES	DRAWN
DRAWING NUMBER	AIO 248 Pad	ENGINEER	CHECKED
REVISION	05/14/13	REVISION	05/14/13
SHEET	1 OF 1	SHEET	1 OF 1