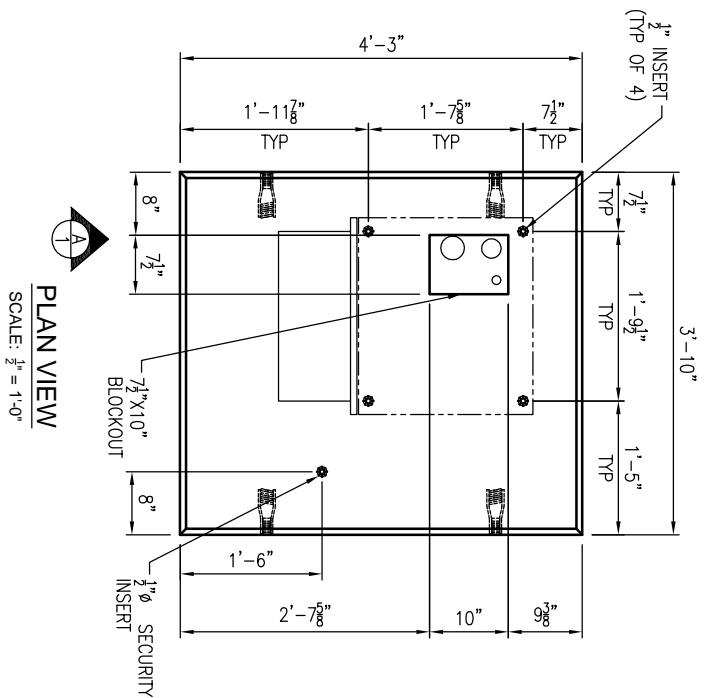
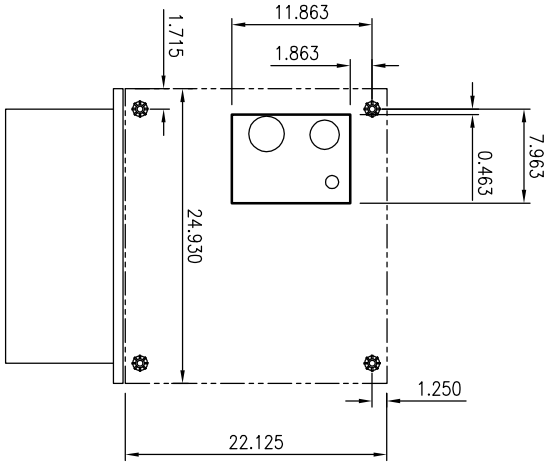


**GENERAL NOTES:**

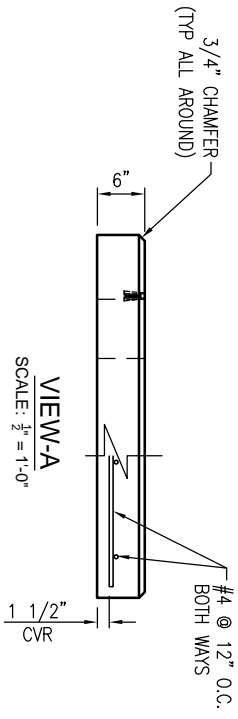
1. CONCRETE: 28 DAY COMPRESSIVE STRENGTH F'c = 4,500 PSI (MIN).
2. REINFORCING: ASTM A-615, GRADE 60.
3. SLAB DESIGNED FOR ALP-130 CABINET LOAD ONLY (WT: 250 LBS).
4. SLAB DESIGNED FOR 150 MPH WIND LOAD, IN ACCORDANCE WITH ASCE 7-10.
5. SLAB SHALL BE SUPPORTED IN ACCORDANCE WITH AT&T PRODUCT SPECIFICATIONS (I.E. LEVEL AND COMPACTED BEARING SURFACE).



**PLAN VIEW**  
SCALE: 3/4" = 1'-0"



**PLAN VIEW OF CABINET  
(FOR REFERENCE)**  
SCALE: 3/4" = 1'-0"



1. USE EXACT BAR SIZE AND SPACING AS NOTED ABOVE.
2. ALL STEEL CUT OUT FOR OPENINGS WILL BE REPLACED, HALF REINFORCEMENT ON EACH SIDE OF OPENING. INCLUDE (2) ADDITIONAL #4 DIAGONAL BARS AROUND OPENING (SEE TYPICAL REINFORCEMENT FOR ALL OPENINGS)

**REVISIONS**

REVISION	DATE	BY	SHEET	DESCRIPTION OF REVISION	REQUESTED BY
A					
B					

SECTION	WEIGHT (lbs)	CONCRETE (CY)
TOTAL	1,300	0.32



THIS DOCUMENT IS THE PROPERTY OF OLDCASTLE PRECAST, INC. IT IS CONFIDENTIAL, SUBMITTED FOR REFERENCE PURPOSES ONLY, AND SHALL NOT BE USED IN ANY WAY INJURIOUS TO THE INTERESTS OF, OR WITHOUT THE WRITTEN PERMISSION OF OLDCASTLE PRECAST, INC. COPYRIGHT © 2010 OLDCASTLE PRECAST, INC. ALL RIGHTS RESERVED.

**46"X51"X6" OD ALP-130 PAD**  
SUBMITTAL LAYOUT

CUSTOMER: <b>A T&amp;T (PIN# ATT.100082925)</b>			
DATE: 5/26/15	SALES: _____	DRAWN: _____	ENGINEER: _____
DRAWING NUMBER: ALP-130 Pad	REVISION: _____	REVD/DATE: _____	CHECKED: _____
			SALES ORDER SHEET: 1 OF 1