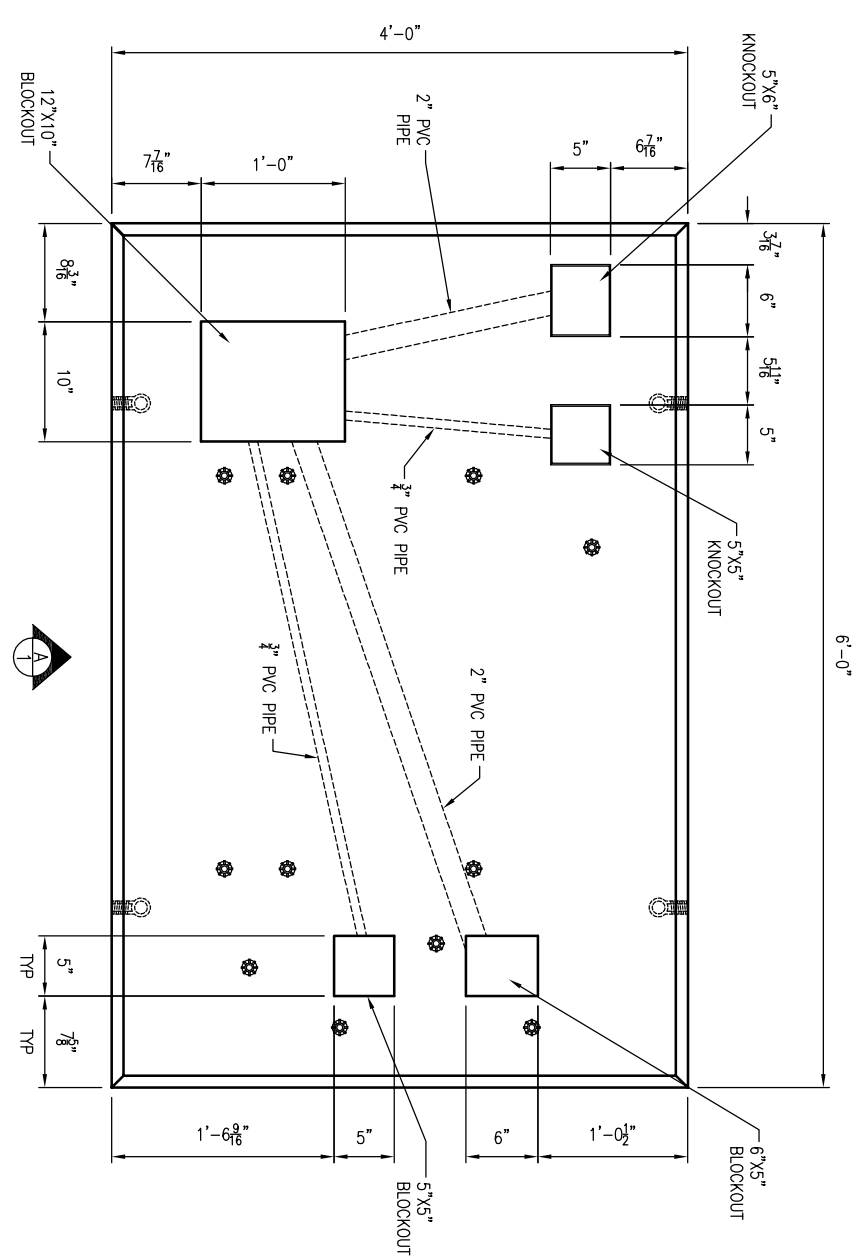
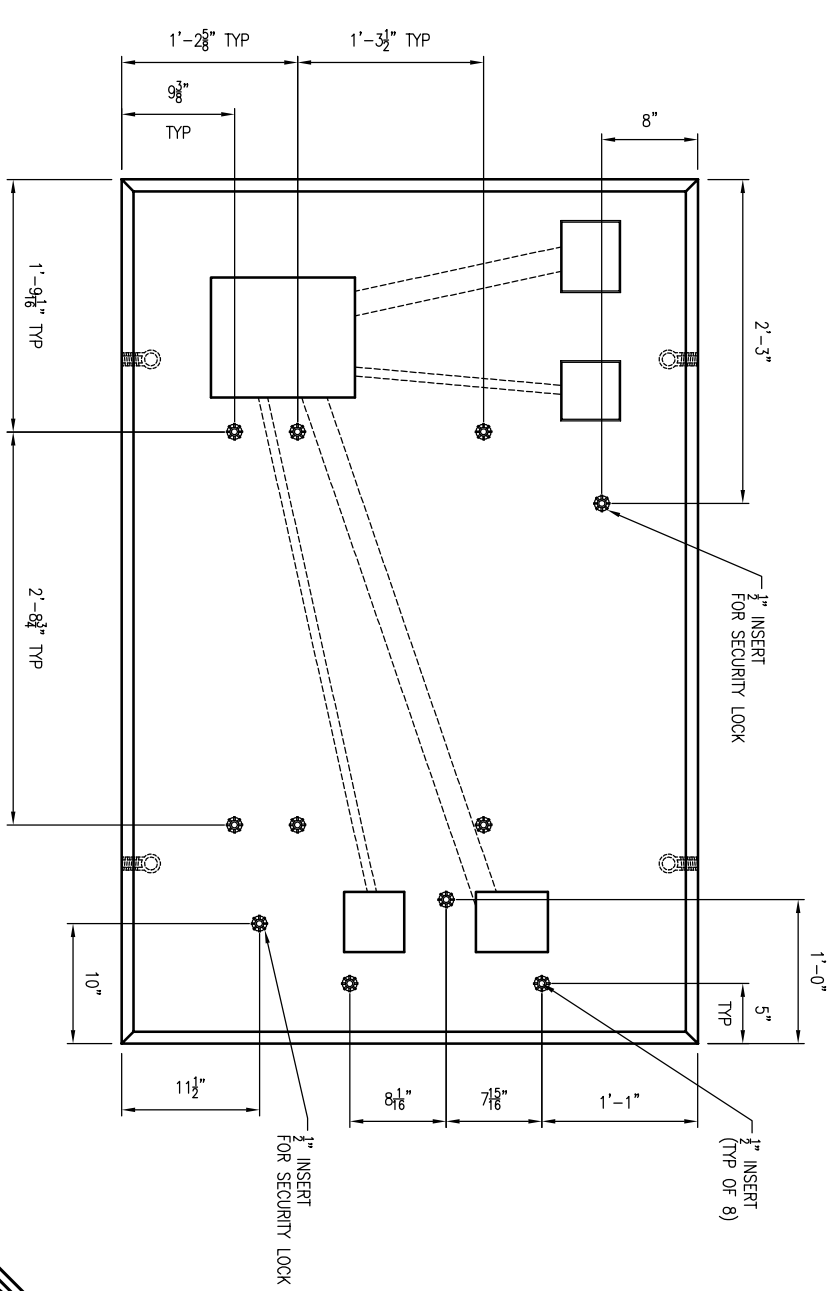


GENERAL NOTES:

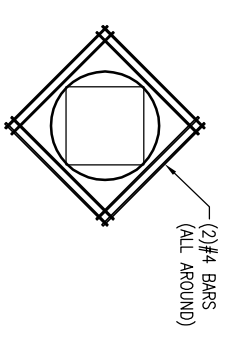
1. CONCRETE: 28 DAY COMPRESSIVE STRENGTH $f'_c = 4,500$ PSI (MIN).
2. REINFORCING: ASTM A-615, GRADE 60.
3. SLAB DESIGNED FOR ALP 148U-448U CABINET LOAD ONLY.
4. SLAB DESIGNED FOR 150 MPH WIND LOAD, IN ACCORDANCE WITH ASCE 7-10.
5. SLAB SHALL BE SUPPORTED IN ACCORDANCE WITH AT&T PROJECT SPECIFICATIONS (I.E. LEVEL AND COMPACTED BEARING SURFACE).



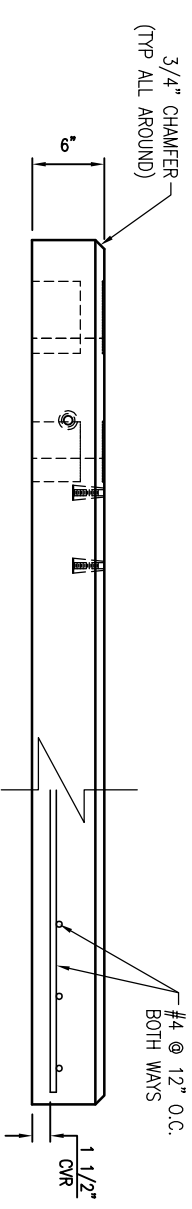
PLAN VIEW (BLOCKOUTS)
SCALE: 3/4" = 1'-0"



PLAN VIEW (INSERTS)
SCALE: 3/4" = 1'-0"



TYPICAL REINFORCEMENT FOR OPENINGS
SCALE: N.T.S.



VIEW A
SCALE: 3/4" = 1'-0"

1. USE EXACT BAR SIZE AND SPACING AS NOTED ABOVE.
2. ALL STEEL CUT OUT FOR OPENINGS WILL BE REPLACED. HALF REINFORCEMENT ON EACH SIDE OF OPENING. INCLUDE (2) ADDITIONAL #4 DIAGONAL BARS AROUND OPENING (SEE TYPICAL REINFORCEMENT FOR ALL OPENINGS)

SECTION	WEIGHT	Concrete (CY)
6" SLAB	1,880	0.42



THIS DOCUMENT IS THE PROPERTY OF OLDCASTLE PRECAST, INC. IT IS CONSIDERED LOANED TO THE USER FOR REVISION PURPOSES ONLY, AND SHALL NOT BE USED IN ANY WAY WITHOUT THE WRITTEN PERMISSION OF OLDCASTLE PRECAST, INC. COPYRIGHT © 2010 OLDCASTLE PRECAST, INC. ALL RIGHTS RESERVED.

4'X6'X6" OD ALP 148U/448U PAD
SUBMITTAL LAYOUT

REVISION	DATE	BY	SHEET	DESCRIPTION OF REVISION	REQUESTED BY
A	5/14/2013	LD	1	ADDED AT&T PIN NUMBER TO TITLEBLOCK	CONTRACTOR
B					

CUSTOMER	DATE	SLES	DRAWN	ENGINEER	CHECKED	REVISION	SHEET
AT & T (PIN# ATT.100002536)	6/24/14						1 OF 1
DRAWING NUMBER						REVISION DATE	
ALP148U/448U						05/14/13	