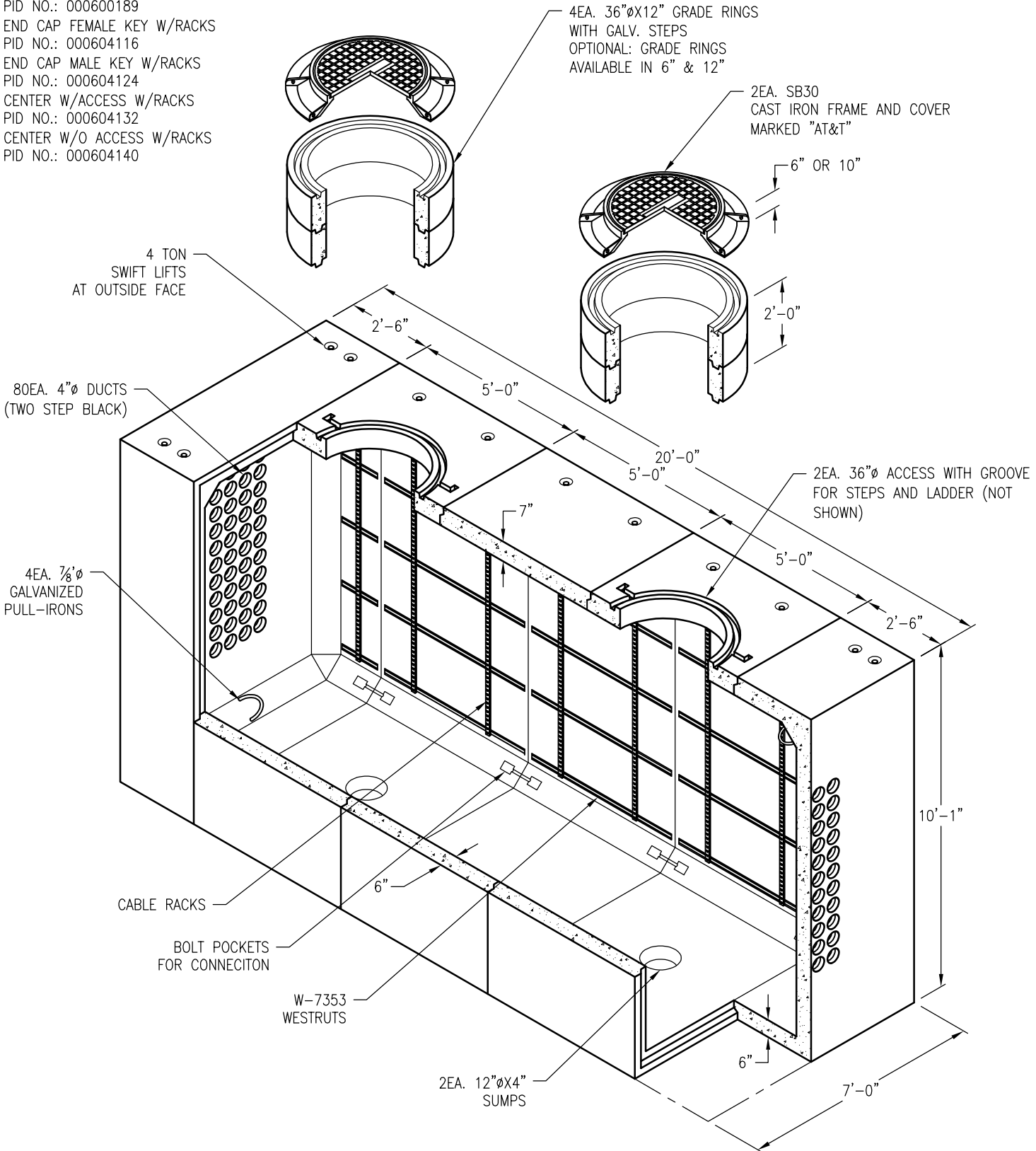


AT&T 6'-0" X 19'-0" X 9'-0" TUNNEL VAULT, TRAFFIC
 PID NO.: 000600189
 END CAP FEMALE KEY W/RACKS
 PID NO.: 000604116
 END CAP MALE KEY W/RACKS
 PID NO.: 000604124
 CENTER W/ACCESS W/RACKS
 PID NO.: 000604132
 CENTER W/O ACCESS W/RACKS
 PID NO.: 000604140



1EA. END SECTION WEIGHT: 10,955 LBS.
 1EA. ACCESS SECTION WEIGHT: 12,320 LBS.
 1EA. INTERMEDIATE SECTION WIEGHT: 12,955 LBS.

DRAWING MAY NOT CONFORM TO THE MOST CURRENT SPECIFICATION

Oldcastle Precast[®]
 Northern California
 Madera ■ Morgan Hill ■ Pleasanton ■ Santa Rosa ■ Stockton ■ Tulare
 Phone: 925-750-6650 Fax: 925-750-6660

| |
|--|
| AT&T-69 |
| FILE NAME: ATT-22.DWG |
| REVISED: MARCH 2016 |
| www.oldcastleprecast.com |

**6'-0" X 19'-0" X 9'-0" (I.D.)
 MODULAR MANHOLE
 AT&T**

Copyright © 2016 **Oldcastle** Precast, Inc.