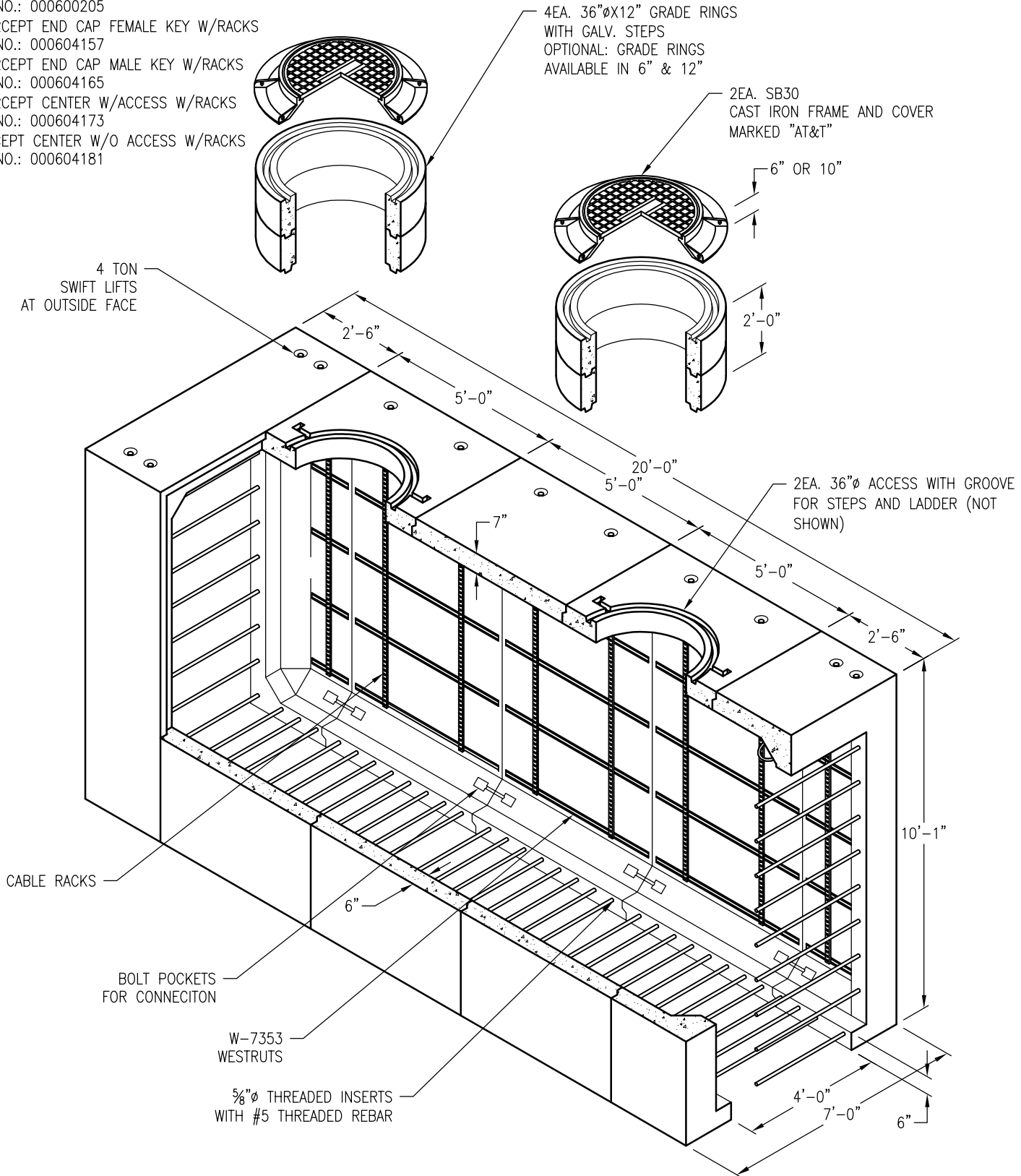


AT&T 6'-0" X 19'-0" X 9'-0" INTERCEPT TUNNEL MANHOLE, TRAFFIC
 PID NO.: 000600205
 INTERCEPT END CAP FEMALE KEY W/RACKS
 PID NO.: 000604157
 INTERCEPT END CAP MALE KEY W/RACKS
 PID NO.: 000604165
 INTERCEPT CENTER W/ACCESS W/RACKS
 PID NO.: 000604173
 INTECEPT CENTER W/O ACCESS W/RACKS
 PID NO.: 000604181



1EA. END SECTION WEIGHT: 7,880 LBS.
 1EA. ACCESS SECTION WEIGHT: 10,790 LBS.
 1EA. INTERMEDIATE SECTION WIEGHT: 11,420 LBS.

DRAWING MAY NOT CONFORM TO THE MOST CURRENT SPECIFICATION

Oldcastle Precast®
 Northern California
 Madera ■ Morgan Hill ■ Pleasanton ■ Santa Rosa ■ Stockton ■ Tulare
 Phone: 925-750-6650 Fax: 925-750-6660

AT&T-69I
FILE NAME: ATT-23.DWG
REVISED: MARCH 2016
www.oldcastleprecast.com

**6'-0" X 19'-0" X 9'-0" (I.D.)
 MODULAR MANHOLE INT.
 AT&T**

Copyright © 2016 **Oldcastle** Precast, Inc.