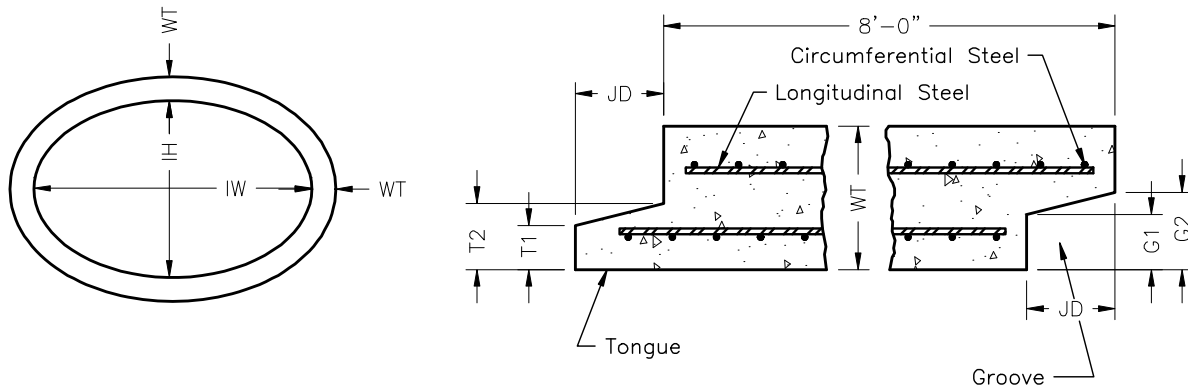


382RCP1860EL ELLIPTICAL REINFORCED CONCRETE PIPE



Reinforced Concrete Elliptical Pipe Dimensions ASTM C-507

SIZE	EQUIVALENT ROUND	IH	IW	WT	T1	T2	G1	G2	JD	Wt. Per Ft.
14" x 23"	18"	14 1/4"	22 3/4"	2 3/4"	7/8"	1 3/8"	1 1/8"	1 5/8"	2"	195 Lbs
19" x 30"	24"	19 1/4"	30 1/4"	3 1/4"	1"	1 1/2"	1 1/4"	1 3/4"	2"	300 Lbs
24" x 38"	30"	24"	37 3/4"	3 3/4"	1 1/8"	1 3/4"	1 3/8"	2"	2 1/2"	430 Lbs
29" x 45"	36"	38 3/4"	45 1/2"	4 1/2"	1 1/2"	2 1/4"	1 3/4"	2 1/2"	3"	625 Lbs
34" x 53"	42"	34"	53 1/4"	5"	1 5/8"	2 1/2"	1 7/8"	2 3/4"	3 1/2"	815 Lbs
38" x 60"	48"	38 1/4"	60"	5 1/2"	1 15/16"	2 7/8"	2 3/16"	3 1/8"	3 3/4"	1,000 Lbs
43" x 68"	54"	43 1/2"	68"	6"	2 1/8"	3 1/8"	2 3/8"	3 3/8"	4"	1,235 Lbs
48" x 76"	60"	48 1/4"	75 1/2"	6 1/2"	2 3/8"	3 3/8"	2 5/8"	3 5/8"	4"	1,475 Lbs



www.oldcastle-precast.com

5900 East Division Street
Lebanon, Tennessee 37090

Phone (615) 453-6111
Fax (615) 453-6080

ITEMS ARE SUBJECT TO CHANGE WITHOUT NOTICE.