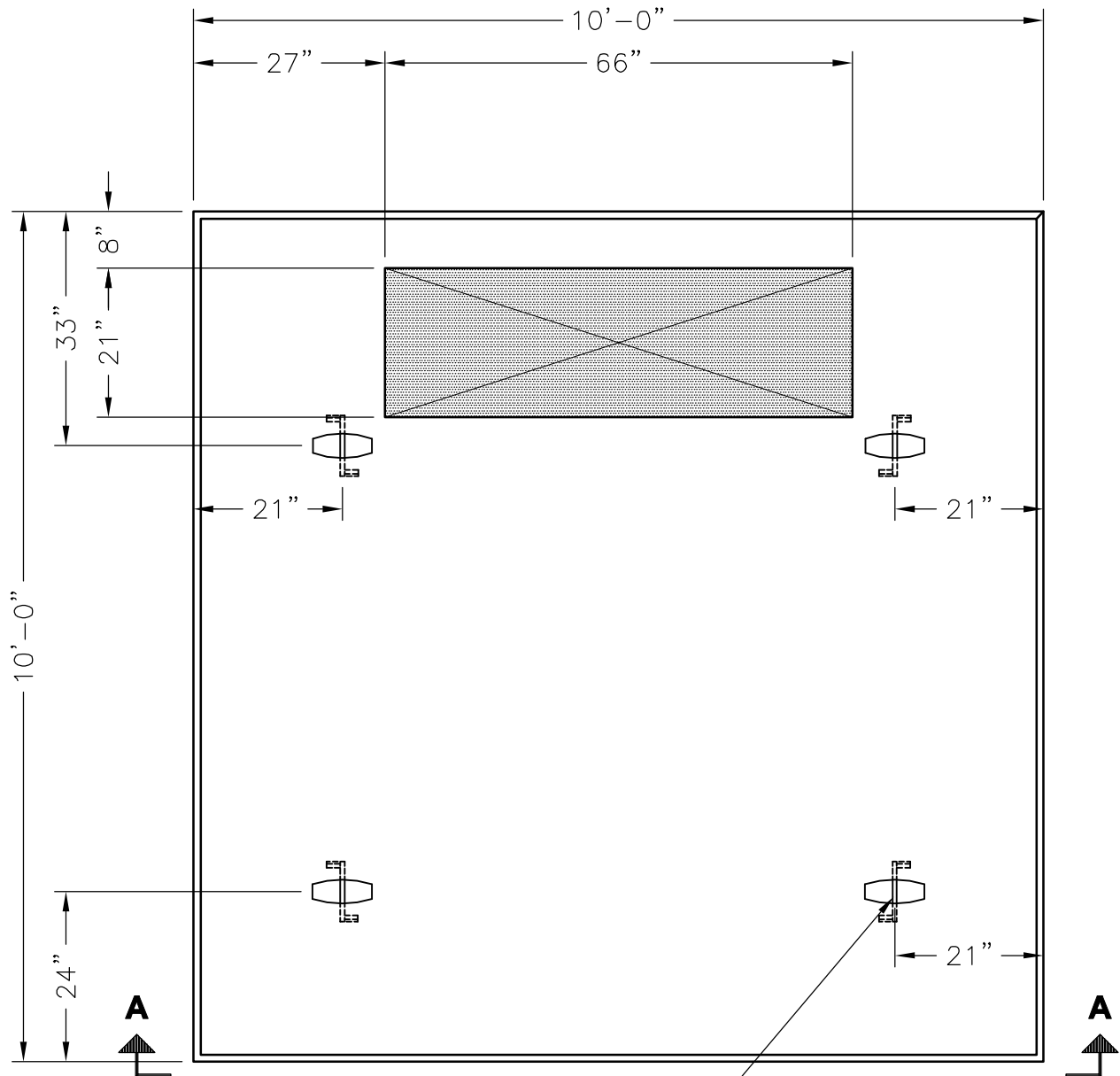


**382UET1010NES**  
**2000 KVA & 2500 KVA**



79U80 Lifting Anchor  
(Typical Of 4 On Top Of Slab)

**PLAN VIEW**



**ELEVATION A-A**

Scale: 1/2"=1'-0"

**NOTES:**

1. Concrete: 28 Day Compressive Strength  $f_c = 5,000$  psi.
2. Reinforcing: ASTM A-615, Grade 60.
3. Weight: 13,600 Lbs

**ITEMS ARE SUBJECT TO CHANGE WITHOUT NOTICE.**

 **Oldcastle® Precast, Inc.**  
[www.oldcastle-precast.com](http://www.oldcastle-precast.com)

5900 East Division Street Phone (615) 453-6111  
Lebanon, Tennessee 37090 Fax (615) 453-6080