

# 382UEE1010NES

## NOTES:

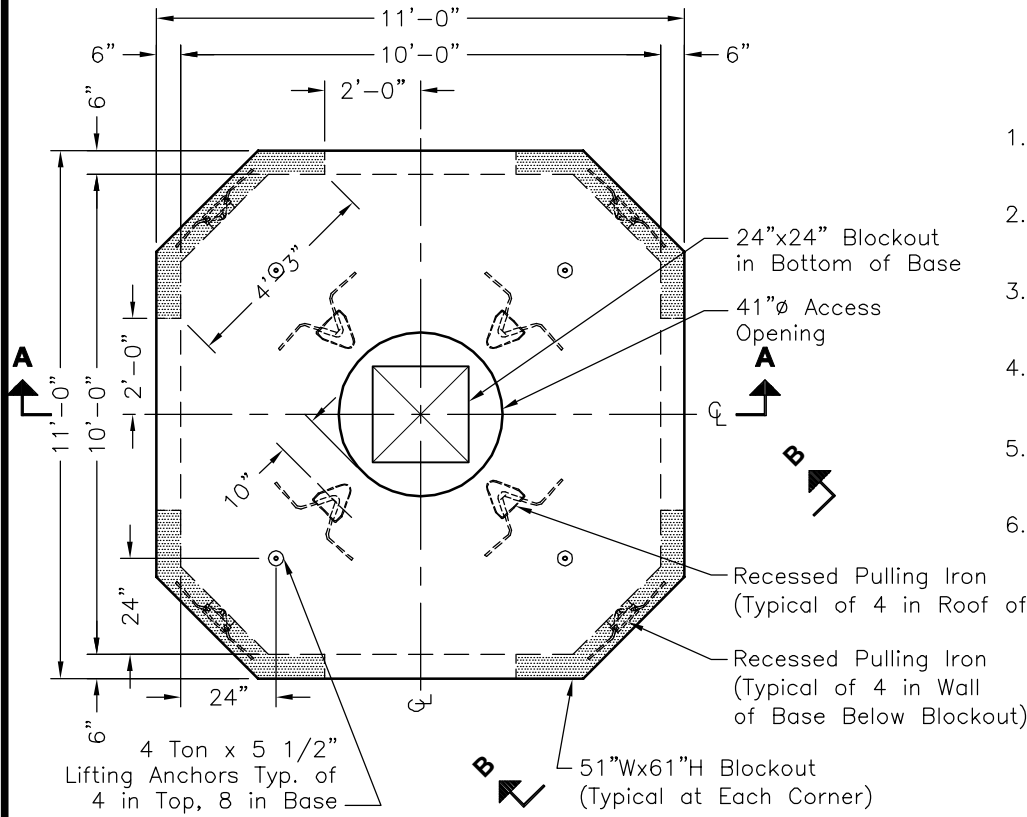
1. Concrete: 28 Day Compressive Strength  $f'_c = 5,000$  psi.
2. Reinforcing: ASTM A-615, Grade 60.
3. Joint Sealant: Butyl Rubber SS-S-00210.
4. Designed for Maximum Soil Cover of 4'-0" Above Box.
5. Supports an H2O Loading as Indicated by AASHTO.
6. NES to Verify Size and Location of All Openings Per Attached Page.

### 10x10x48 TOP

17,900 Lbs  
8.95 Tons  
4.42 CY Conc.

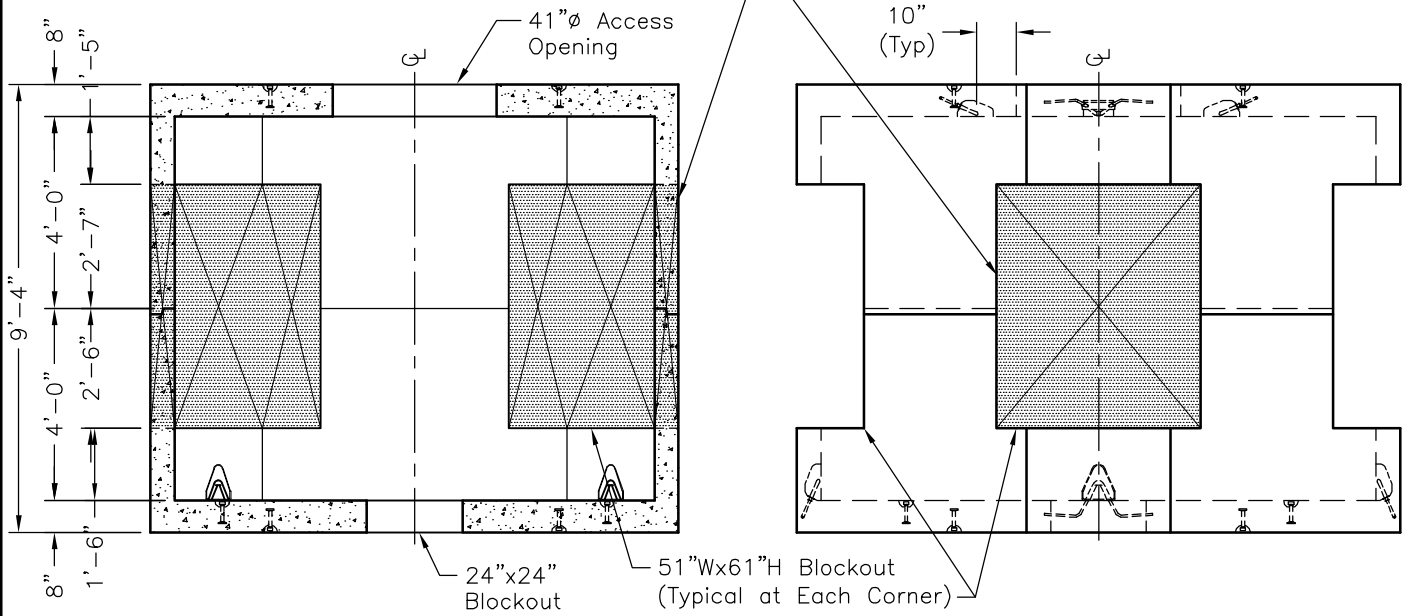
### 10x10x48 BASE

18,400 Lbs  
9.20 Tons  
4.54 CY Conc.



## PLAN VIEW

Size & Location  
as Necessary



## SECTION A-A

## ELEVATION B-B

Scale: 1/4"=1'-0"

Base: 3604000  
Top: 3147530

 **Oldcastle® Precast, Inc.**

www.oldcastle-precast.com

5900 East Division Street Phone (615) 453-6111  
Lebanon, Tennessee 37090 Fax (615) 453-6080

ITEMS ARE SUBJECT TO CHANGE WITHOUT NOTICE.  
FOR DETAILS SEE REVERSE SIDE.