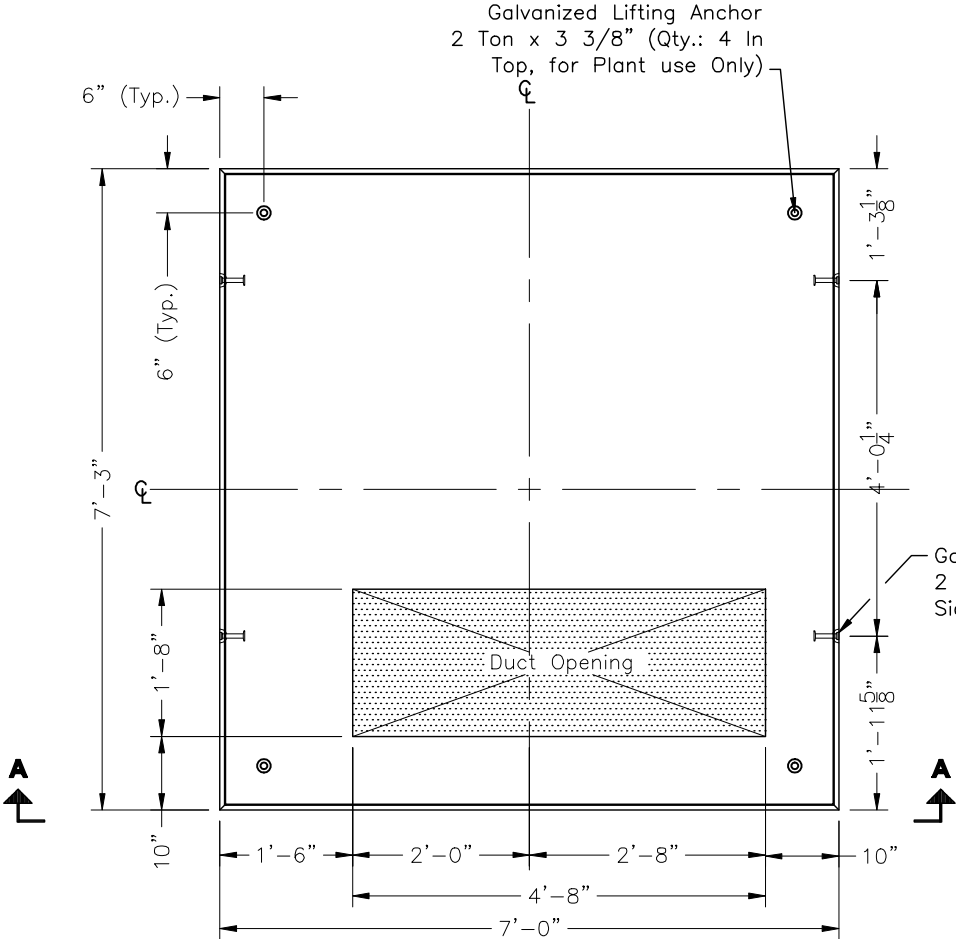


382UET8487TPMLGW
2000 KVA to 75 KVA

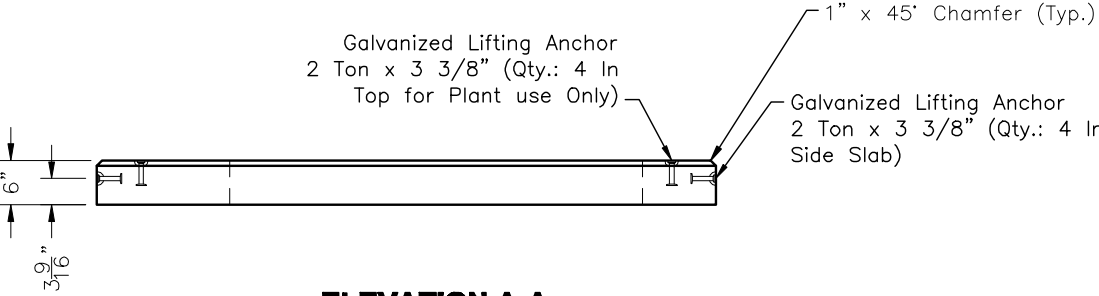
Galvanized Lifting Anchor
 2 Ton x 3 3/8" (Qty.: 4 In
 Top, for Plant use Only)

NOTES:

- 1. Concrete: 28 Day Compressive Strength $f_c = 5,000$ psi.
- 2. Reinforcing: ASTM A-615, Grade 60.
- 3. Weight: 3,300 Lbs



PLAN VIEW



ELEVATION A-A

Scale: 1/2"=1'-0"



www.oldcastle-precast.com
 5900 East Division Street Phone (615) 453-6111
 Lebanon, Tennessee 37090 Fax (615) 453-6080

ITEMS ARE SUBJECT TO CHANGE WITHOUT NOTICE.