

NOTES:

1. BioMod® bioretention systems are designed & manufactured in accordance with ASTM C857 & C858.
2. Exposed metal components shall be stainless steel, aluminum or galvanized steel.
3. BioMod® Prefilter Modules are cast to meet project specific requirements for depth, pipe connections and filter cell orientation. Refer to curb inlet pre-filter dimension chart, sheet 2 of 2.

U.S. PATENTS PENDING.



Media Filtration

BioMod®
 Modular Bioretention System
 Curb Inlet Prefilter Module

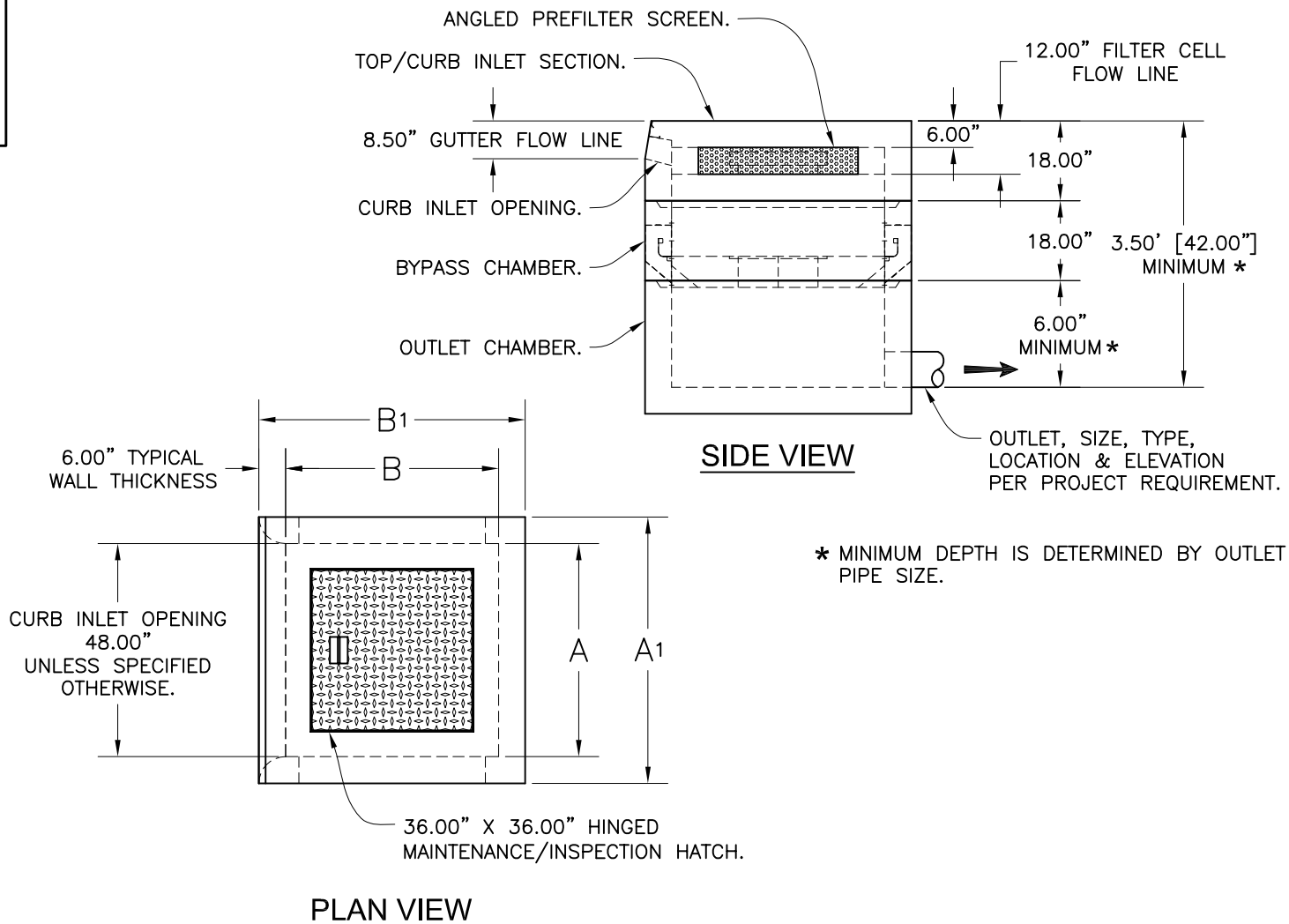


Oldcastle®
 Stormwater Solutions

7921 Southpark Plaza, Suite 200 | Littleton, CO | 80120 | Ph: 800.579.8819 | oldcastlestormwater.com

THIS DOCUMENT IS THE PROPERTY OF OLDCASTLE PRECAST, INC. IT IS SUBMITTED FOR REFERENCE PURPOSES ONLY AND SHALL NOT BE USED IN ANY WAY INJURIOUS TO THE INTERESTS OF SAID COMPANY. COPYRIGHT © 2010 OLDCASTLE PRECAST, INC. ALL RIGHTS RESERVED.

DRAWING NO.	REV	ECO	DATE	
BM-0003	NR	ECO-0094	JPR 1/7/15	SHEET 1 OF 2
		NEW 1/7/15		

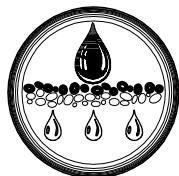


* MINIMUM DEPTH IS DETERMINED BY OUTLET PIPE SIZE.

DIMENSION CHART

MODEL	A Dimension ID (at Inlet)	B Dimension ID (Side)	A1 Dimension OD (at Inlet)	B1 Dimension OD (Side)
CIP-43	4.00'	3.00'	5.00'	4.00'
CIP-44	4.00'	4.00'	5.00'	5.00'
CIP-45	4.00'	5.00'	5.00'	6.00'
CIP-46	4.00'	6.00'	5.00'	7.00'
CIP-47	4.00'	7.00'	5.00'	8.00'
CIP-48	4.00'	8.00'	5.00'	9.00'
CIP-63	6.00'	3.00'	7.00'	4.00'
CIP-64	6.00'	4.00'	7.00'	5.00'
CIP-65	6.00'	5.00'	7.00'	6.00'
CIP-66	6.00'	6.00'	7.00'	7.00'
CIP-67	6.00'	7.00'	7.00'	8.00'
CIP-68	6.00'	8.00'	7.00'	9.00'

U.S. PATENTS PENDING.



BioMod®
 Modular Bioretention System
 Curb Inlet Prefilter Module



Oldcastle®
 Stormwater Solutions

7921 Southpark Plaza, Suite 200 | Littleton, CO | 80120 | Ph: 800.579.8819 | oldcastlestormwater.com
 THIS DOCUMENT IS THE PROPERTY OF OLDCASTLE PRECAST, INC. IT IS SUBMITTED FOR REFERENCE PURPOSES ONLY AND SHALL NOT BE USED IN ANY WAY INJURIOUS TO THE INTERESTS OF SAID COMPANY. COPYRIGHT © 2010 OLDCASTLE PRECAST, INC. ALL RIGHTS RESERVED.

DRAWING NO. BM-0003	REV NR	ECO ECO-0094 NEW 1/7/15	DATE JPR 1/7/15	SHEET 2 OF 2
------------------------	-----------	-------------------------------	--------------------	--------------