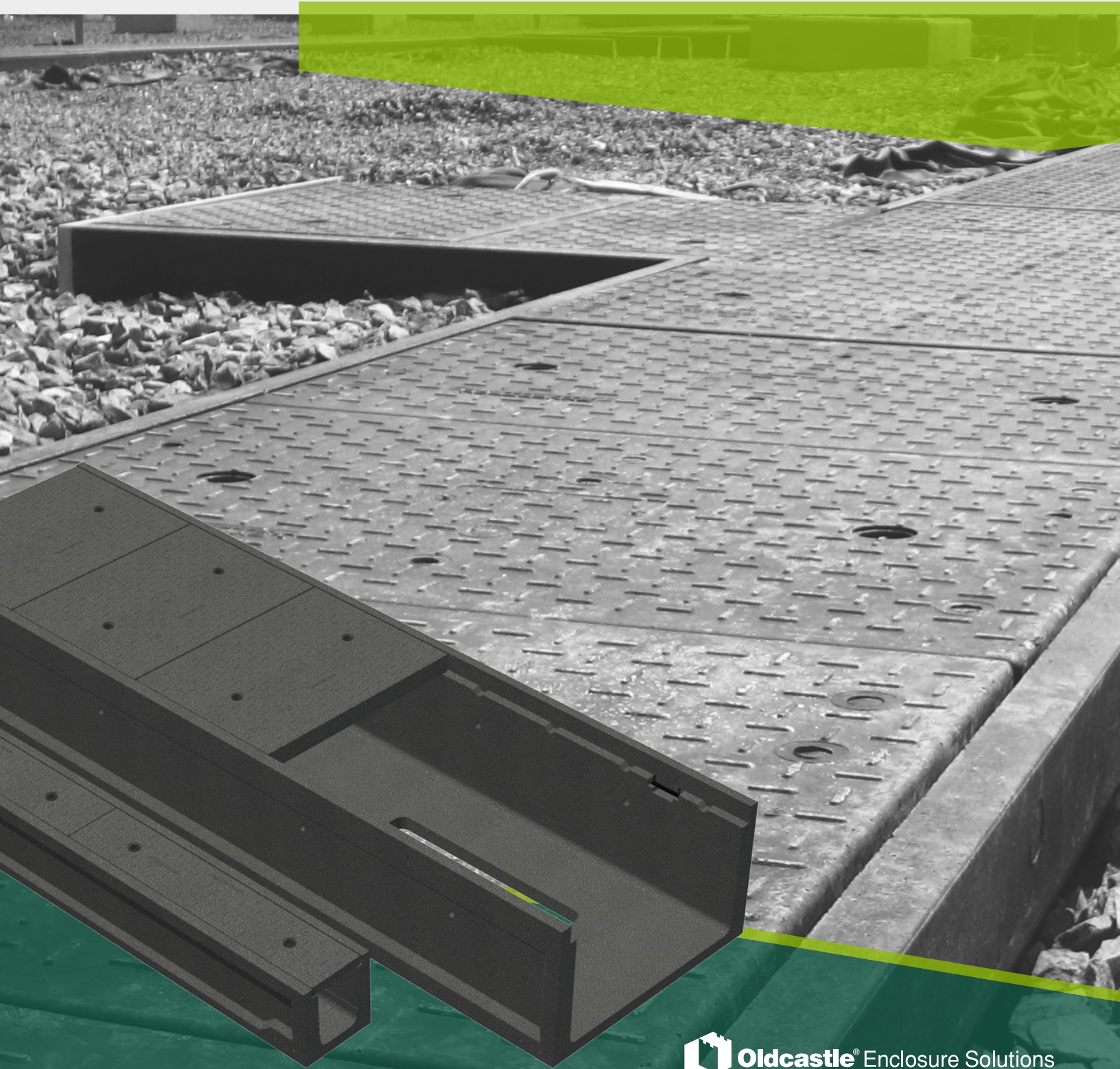


PLASTIBETON®

THE SOLID APPROACH
TO TRENCHING.



THE SOLID APPROACH TO TRENCHING.

PLASTIBETON® CHANNEL SYSTEM

Plastibeton® is a trusted solution used by power companies, wireless carriers, rail lines and data centers throughout North America to contain power, control, signal, coax, communication and fiber optic cables. The Plastibeton® Channel System is the perfect alternative to duct bank or direct buried applications and provides containment, protection, and immediate access to cables.

IT WON'T CRACK UNDER PRESSURE.

The Plastibeton® Channel System cable trench provides outstanding H2O load rating at any point. It is designed and tested to exceed industry standards, and with an unmatched strength to weight ratio, Plastibeton® reduces installation costs and is the safer cable trench choice.

ENGINEERED WITH YOU IN MIND.

Plastibeton® uses advanced polymer technology to provide unmatched performance. Plastibeton® is manufactured using a patented material, High Density Polymer Concrete, that has exceptional strength, and is not affected by acids, salts, chemicals, or freeze/thaw cycles. Additionally, the dielectrical material does not need grounding.

A CABLE SYSTEM YOU CAN RELY ON.



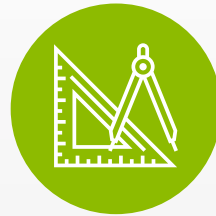
LIGHTWEIGHT

Oldcastle delivers the lightest and strongest cable trench on the market. Many of our covers do not exceed safe allowable handling weights, and do not require mechanical equipment to remove covers.



STRONG

High Density Polymer Concrete is four times stronger than standard concrete. Rest assured, Plastibeton® will provide high-performance strength for your project.



ENGINEERED

Our technical team is ready to develop a solution for your project. The skilled team of drafters and engineers will design a cable trench layout to fit your complex project needs.

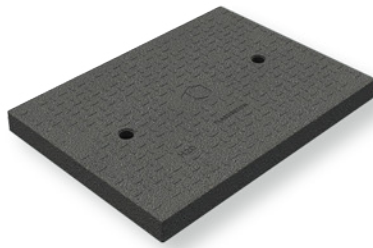


ROBUST

We understand that every project is different. Plastibeton® is offered in a variety of widths and depths with a wide array of accessories and cover options to create a successful project.

PLASTIBETON® CHANNEL SYSTEM FEATURES

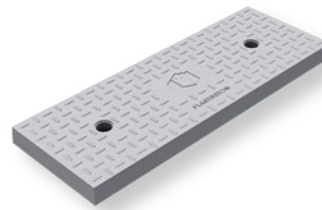
CABLE TRENCH COVERS




PLASTIBETON® *Standard Cover*

 AASHTO H20
16,000 LB Wheel Load

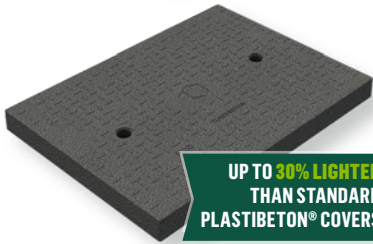
This compression molded high-density polymer concrete trench cover is delivers H20 strength.




PLASTIBETON® HD

 HEAVY DUTY
32,000 LB Wheel Load

The Plastibeton® HD cover is designed to provide twice the capacity of the standard H20 cover, for extreme high-loading situations.



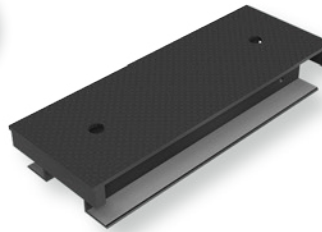
PLASTIBETON® LW

 AASHTO H20
16,000 LB Wheel Load


H20 strength delivered at a weight that is safe to handle as a two-person lift. This cover is up to 30% less weight than standard Plastibeton® covers.

NEW

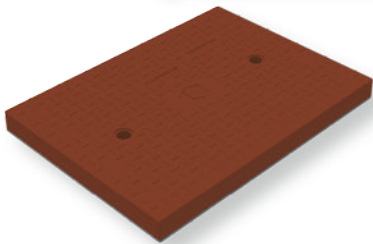
**UP TO 30% LIGHTER
THAN STANDARD
PLASTIBETON® COVERS**



STEEL

 HEAVY DUTY
32,000 LB Wheel Load

Durable galvanized steel with slip-resistant diamond plate surface, recommended for road crossings with frequent traffic.




PLASTIBETON® PED

 PEDESTRIAN
300 LB/FT²

Plastibeton® PED is the pedestrian rated trench cover. The red tint helps to distinguish between H20 and pedestrian rated covers in the field.



GRATED

 HEAVY DUTY
32,000 LB Wheel Load

Grated steel cover is designed for power applications to allow for heat dissipation and ventilation.

CABLE TRENCH BODIES



MONOLITHIC CONSTRUCTION

Molded as a single, uniform piece—providing simplified installation, superior strength and exceptional durability.

DROP-IN COVERS

Covers lay flush within the trench for safe walking or driving transition.

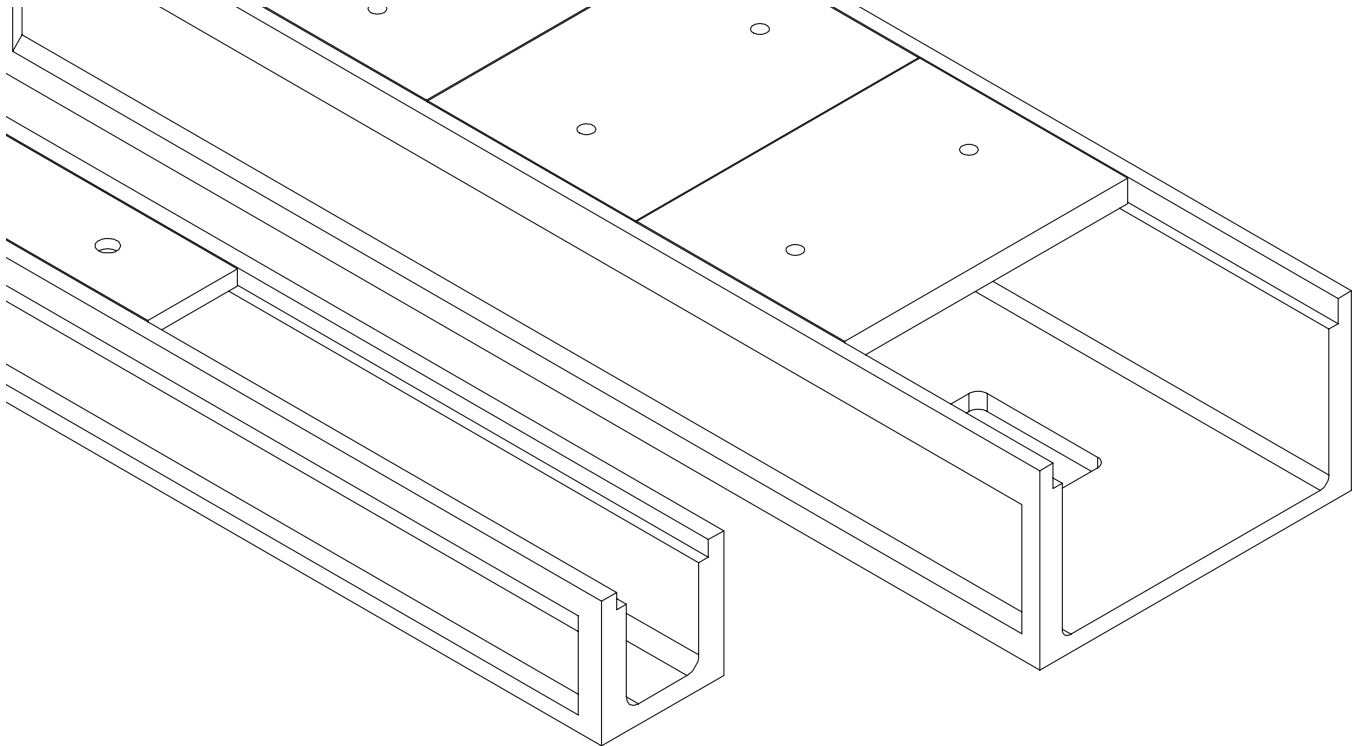
ACCESSIBLE CABLE EXITS

Cable exits are provided in trench bottoms to allow for drainage and interface with conduits.

ADVANCED COMPOSITE DESIGN

Manufactured with a patented process using a combination of resin and stone to provide a dielectric material that has exceptional resistance to acids, oil, and freeze/thaw cycles.

PLASTIBETON® CHANNEL SYSTEM



PLASTIBETON® CABLE TRENCH

Model	Interior Width	Interior Depth	Length	Weight (lbs)
T68	6 1/16"	7 11/16"	118 1/8"	452
T128	11 15/16"	7 1/2"	118 1/8"	563
T1216	12 1/8"	14 11/16"	118 1/8"	897
T2012	20 1/8"	12 1/4"	118 1/8"	816
T2016	20"	16"	118 1/8"	1030
T3012	30 1/8"	13 1/16"	118 1/8"	1054
T3016	29 15/16"	14 5/16"	118 1/8"	1238
T4016	40 1/8"	15 1/8"	118 1/8"	1465

PLASTIBETON® COVERS (STANDARD)

Model	Width	Length	Thickness	Weight (lbs)	Covers per Section*
TC6	7 1/2"	39 3/8"	1 1/4"	25	3
TC12	14"	39 3/8"	2 1/4"	75	3
TC20	22"	39 3/8"	2"	122	3
TC30	32"	23 5/8"	2 1/2"	132	5
TC40	42 3/8"	23 5/8"	3"	217	5

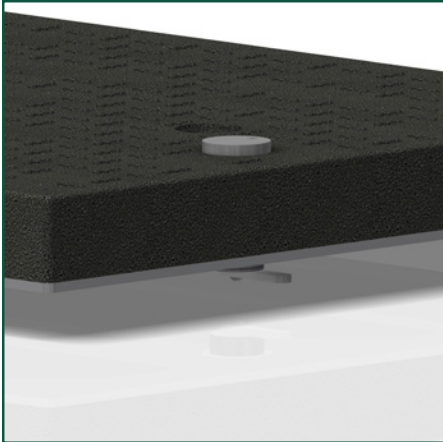
HALF COVERS

TC20 Half	22"	19 5/8"	2"	72	6
TC30 Half	32"	11 11/16"	2 1/2"	86	10
TC40 Half	42 3/8"	11 11/16"	3"	137	10

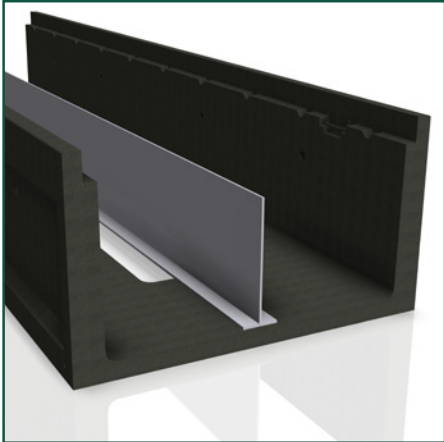
*Covers per section indicates the number of covers needed per standard length of trench (118").

For a full listing of cover options, please refer to the Cable Trench Product Catalog.

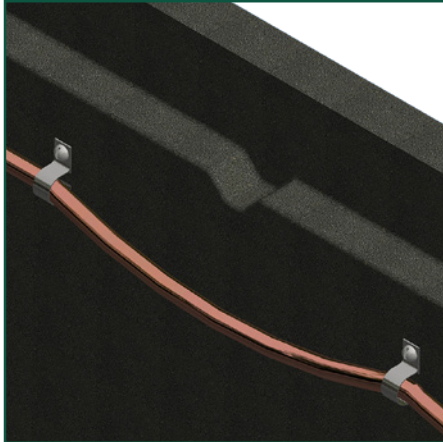
PLASTIBETON® OPTIONS & ACCESSORIES



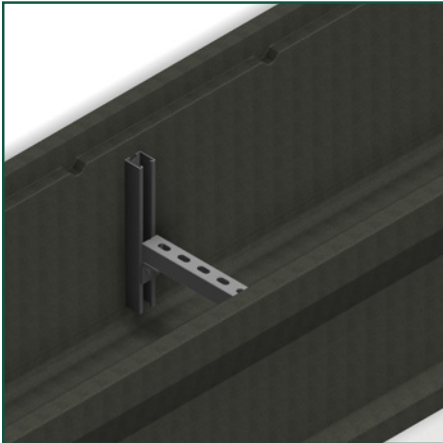
LOCKING COVERS



DIVIDERS



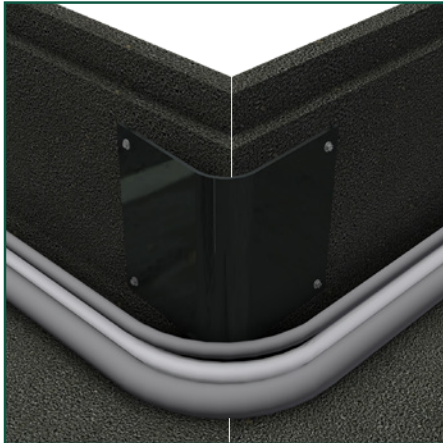
CABLE CLIPS



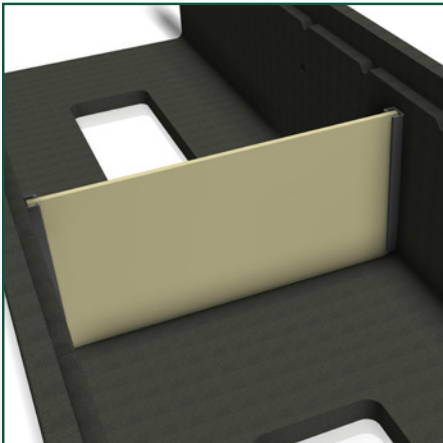
UNISTRUT



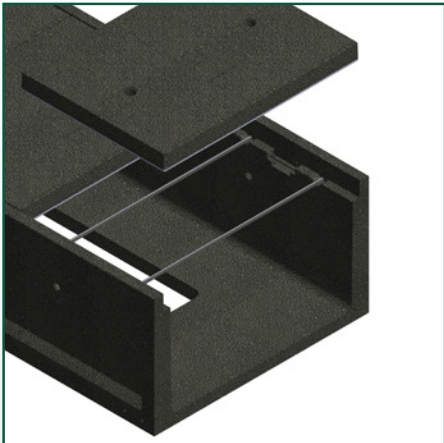
CABLE RISER



CORNER PROTECTORS



FIRESTOP



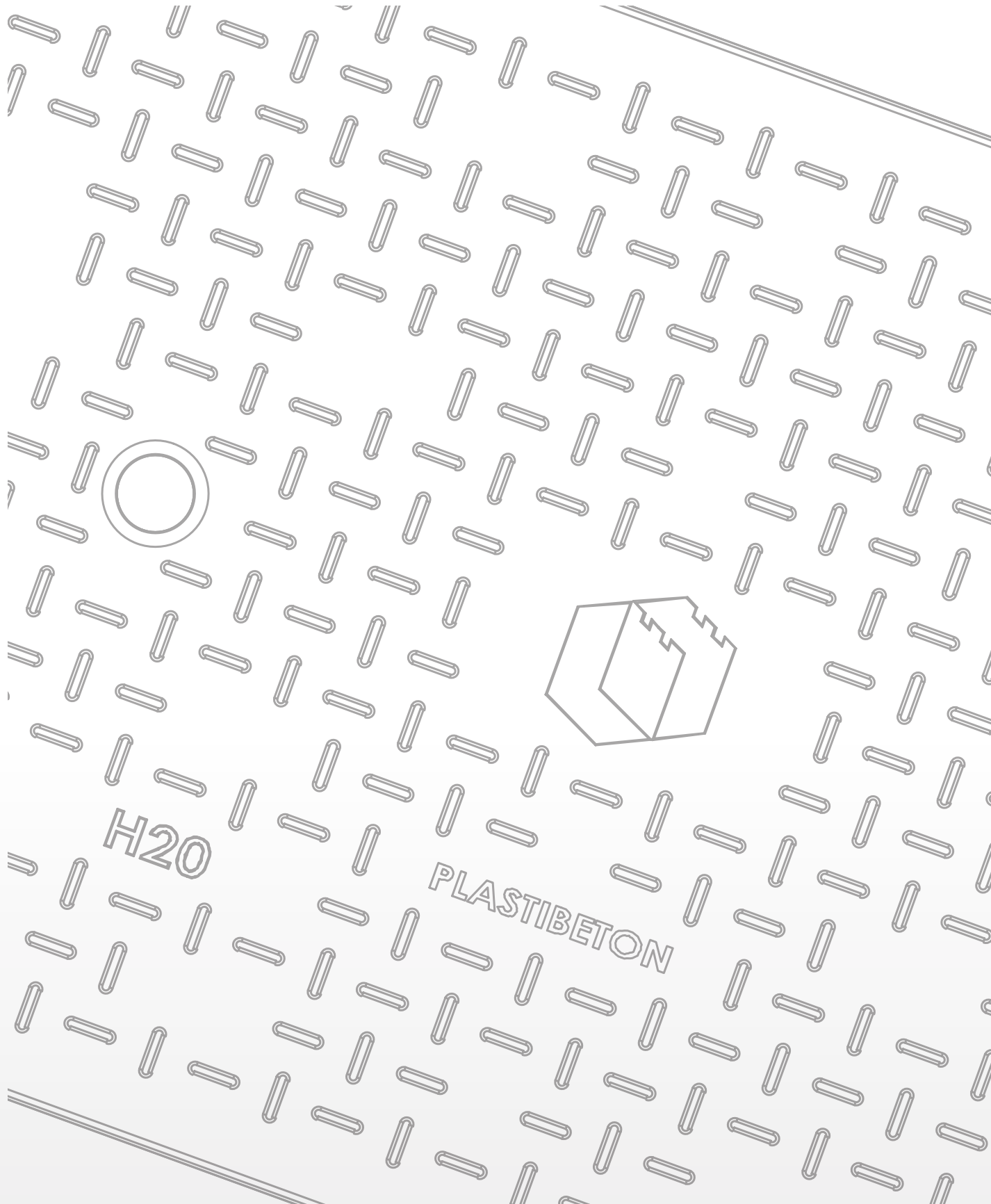
PROTECTION RODS



ATTACHMENT PLATES

PLASTIBETON® CHANNEL SYSTEM







Oldcastle®
Enclosure Solutions

Count on Oldcastle Enclosure Solutions to deliver reliable, high-performance products to allow for a safer and more successful project.



FOR MORE INFORMATION CALL

(888) 868-5214



VISIT OUR WEBSITE

OldcastleEnclosures.com

At Oldcastle Enclosure Solutions, we understand what makes your projects successful — the right enclosure, for the right location, for the right application. That's why we're dedicated to providing innovative, high-quality solutions to meet every application and the reliable service to back it up.

We leverage our footprint and manufacturing portfolio of the world's leading brands in grade-level utility boxes to create optimal solutions for Electrical, Communications, Water and Irrigation markets.

We believe our solutions do more than simply support infrastructure, that our solutions keep our communities running strong.