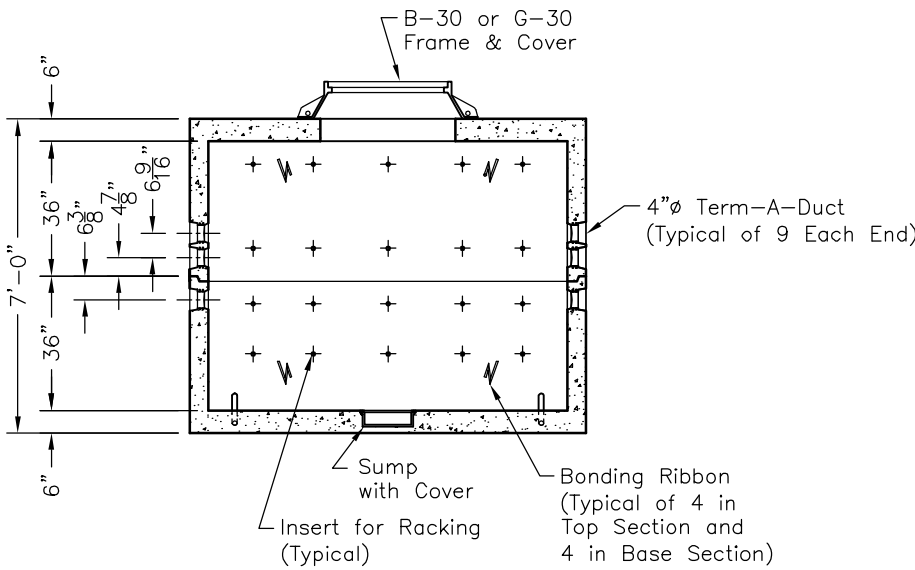


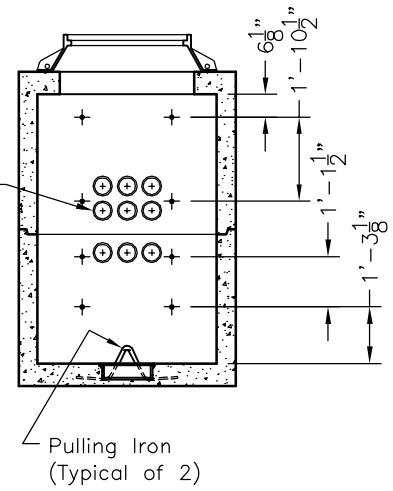
PLAN VIEW

NOTES:

1. Concrete: 28 Day Compressive Strength $f'_c = 4,500$ psi.
2. Reinforcing: ASTM A-615, Grade 60.
3. Joint Sealant: Butyl Rubber SS-S-00210.
4. Designed for Maximum Soil Cover of 5'-0" Above Box.
5. Supports an H2O Loading as Indicated by AASHTO.



SECTION VIEW A-A



SECTION VIEW B-B

SCALE: 1/4" = 1'-0"



48-A

**4'-0" x 8'-0" x 6'-0" I.D.
Bell South Vault**

4905 Stough Road, Concord, North Carolina 28025
Phone: 704-788-4050 Fax: 704-788-4060

FILE NAME: 462UTT48ADET.DWG

ISSUE DATE: June, 2001

www.oldcastleprecast.com

Copyright © 2001 Oldcastle Precast, Inc.