

NOTES:

1. Concrete: 28 Day Compressive Strength $f'c = 4,500$ psi.
2. Reinforcing: ASTM A-615, Grade 60.
3. Joint Sealant: Butyl Rubber SS-S-00210.
4. Precast Supports An H2O Loading As Indicated By AASHTO.
5. Contractor To Verify Size And Location Of All Openings.

39" Top

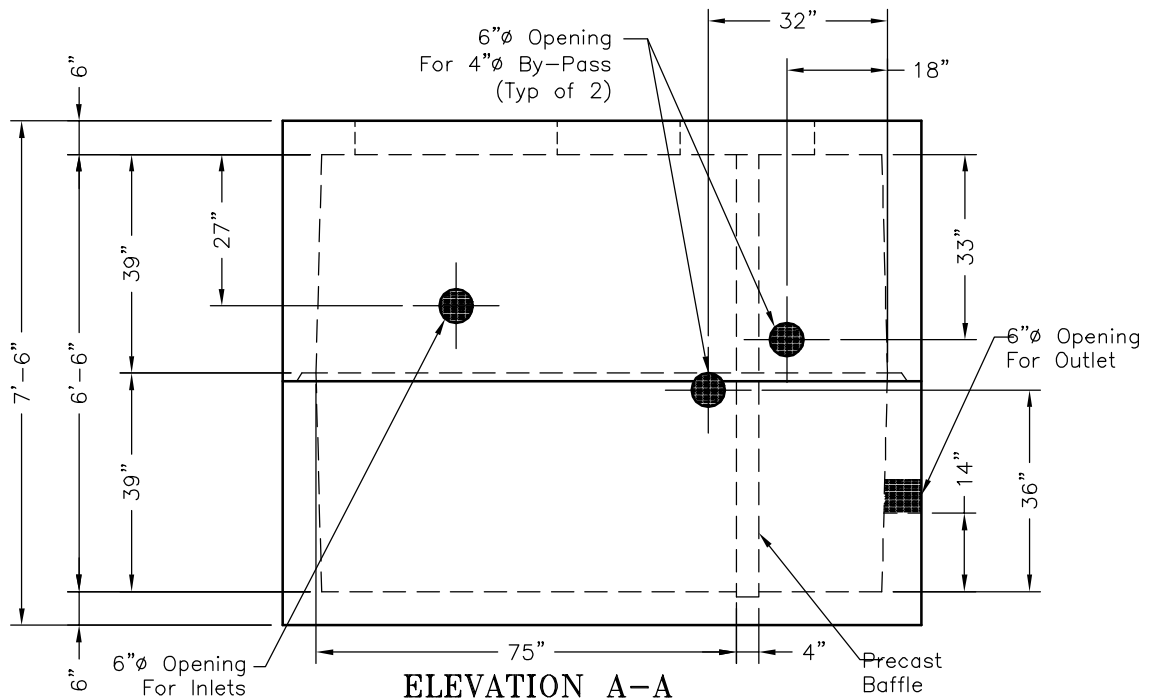
Wt: 10,300 Lbs.
5.15 Tons
2.54 CY Conc.

39" Base

Wt: 11,200 Lbs.
5.60 Tons
2.77 CY Conc.

Baffle

Wt: 1,600 Lbs.
0.80 Tons
0.40 CY Conc.



DRAWN	DATE
LW Paul	02/02/09
CHECKED	DATE
APPROVED	DATE
REVISION	DATE
REVISION	DATE

Sand/Oil/Interceptor

4'-6" x 8'-6" x 6'-6" Vault

DRAWING NAME	century-oil-sand
FILE LOC.	
SHEET	1 OF 1
SALES ORDER NO.	
SCALE:	3/8" = 1'-0"



Oldcastle® Precast, Inc. - Concord
4905 STOUGH ROAD CONCORD, NC 28027
(704)788-4050 • FAX (704)788-4060 • WATS (800)633-3171