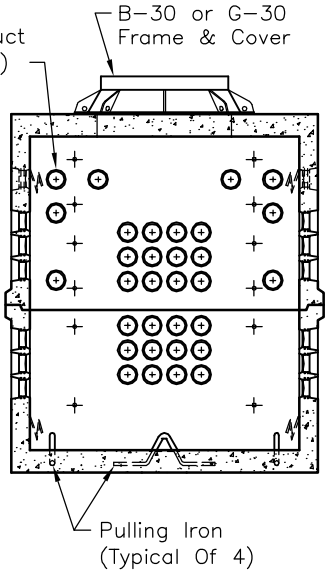
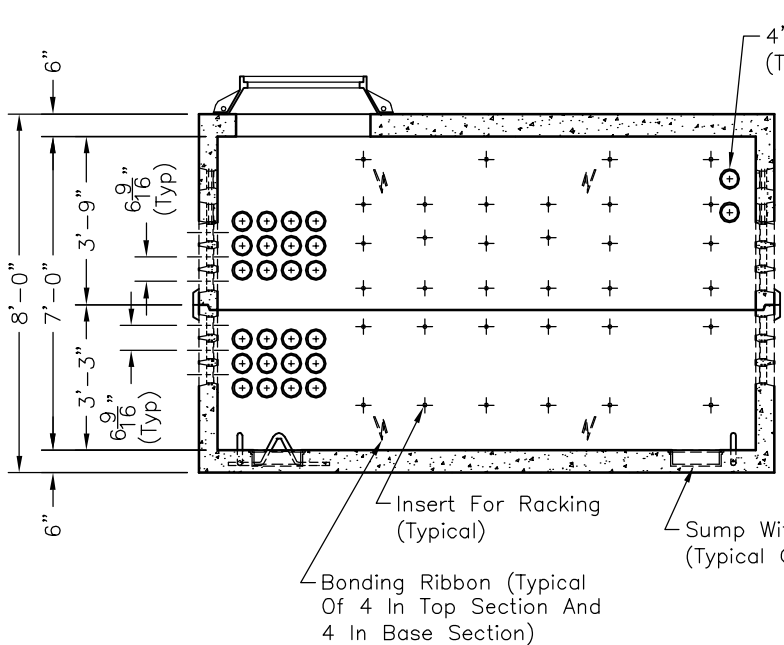


NOTES:

1. Concrete: 28 Day Compressive Strength $f'_c = 4,500$ psi.
2. Reinforcing: ASTM A-615, Grade 60.
3. Joint Sealant: Butyl Rubber SS-S-00210.
4. Designed For Maximum Soil Cover Of 5'-0" Above Box.
5. Supports An H20 Loading As Indicated By AASHTO.

PLAN VIEW



SECTION VIEW A-A

SECTION VIEW B-B

SCALE: 1/4" = 1'-0"



612-T-SW

**6'-0" x 12'-0" x 7'-0" I.D.
Bell South Vault**

4905 Stough Road, Concord, North Carolina 28025
Phone: 704-788-4050 Fax: 704-788-4060

FILE NAME: 462UTT612TSWDET.DWG
ISSUE DATE: June, 2001
www.oldcastleprecast.com

Copyright © 2001 Oldcastle Precast, Inc.